



CAMBRIDGE 27

FW CARRINGTON & SON LIMITED



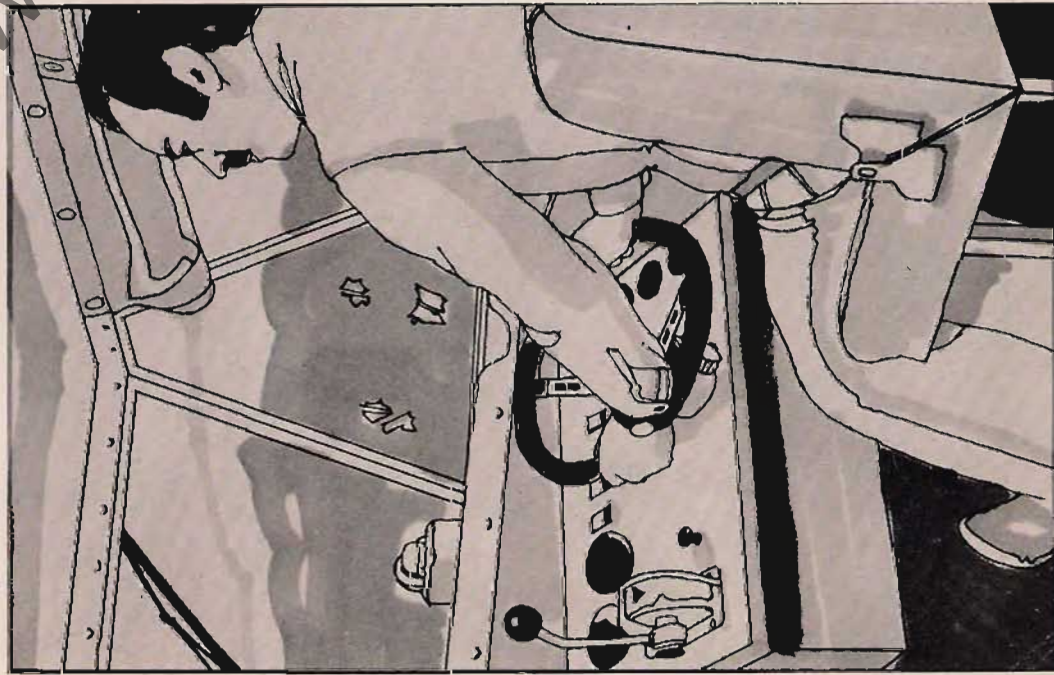
The CAMBRIDGE 27 is based on a well proven hull with a moderate vee. The hard chine design incorporates a spray knuckle to give a dry foredeck under power.

A variety of engine options is available to suit the intended use and requirements of the owner. For inland waterways a single inboard diesel unit is fitted with conventional drive, while for extra performance up to 25 knots, and coastal cruising there are other single or twin inboard or outdrive options available.

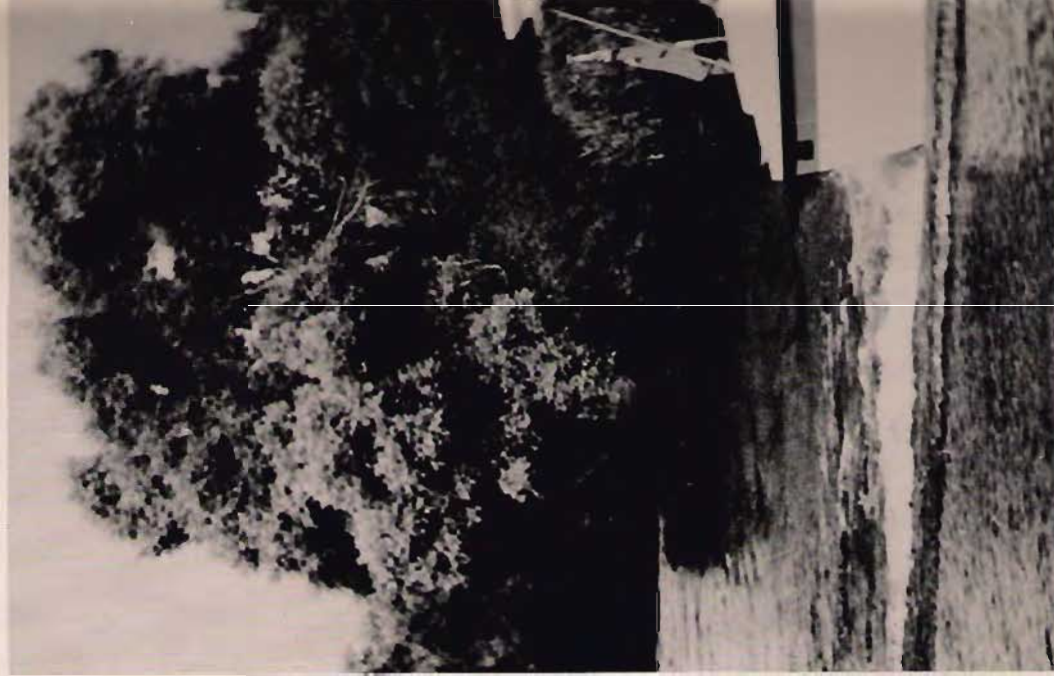
ACCOMMODATION

The CAMBRIDGE 27 is designed with an open plan interior giving spacious living for four adults in luxurious comfort. A high standard of finish is achieved by careful selection of colours and materials. There is an abundance of teak faced panels, tastefully blended with durable furnishing fabrics. The fittings selected are of a complimentary high standard, providing luxury accommodation unusual for a vessel of this size.

Two single berths forward can have full privacy behind a curtain which can be drawn across the full cabin



width. An "L" shaped dinette with panoramic views, converts into a comfortable double berth. More than ample drawer space with adequate locker stowage, cocktail cabinet and wardrobes add to the already well planned interior. The galley comprises a stainless steel sink and two burner hob unit, with a grill, oven and refrigerator beneath. Pressurised hot and cold water system is standard. The toilet compartment includes a chemical toilet, shower and washbasin. The cockpit has a large rear seat and fitted canopy and sidescreeen



CONTROLS

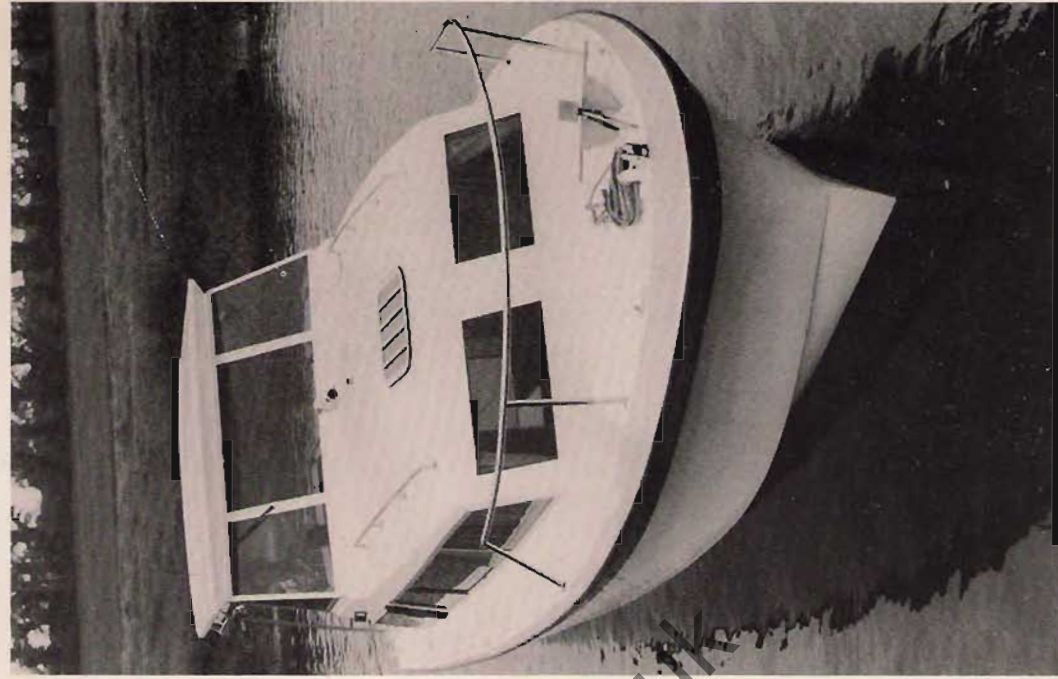
Clear all round vision is obtained from the de luxe helmsman seat in the spacious cockpit. All controls and easy to read dials and gauges are to hand, beside and behind the padded alloy steering wheel.

STANDARD EQUIPMENT

Stainless steel pulpit, Coachroof and Helm Shelter grabrails. Signal mast, Anchor and chocks, chainpipe.

Anodised Alloy Cleats, bow roller, fairleads. Fuel and water deck fillers. Navigation lights, cabin and engine vents, horn. Full instrument console, windscreen wiper, steering compass, electric bilge pump. Car type steering wheel, Fire extinguishers, tinted toughened glass windows in anodised frames. Carpets, curtains, upholstered bunks and dinette, stainless steel sink, two burner hotplate, grill, oven and refrigerator, gas water heater, pressurised water system and shower. Mooring lines, contrasting coachline on hull, cockpit hood and sidescreens.

CAMBRIDGE 27



F.W. Carrington & Son Limited
 Quiet Waters Boatyard
 Earith, Huntingdon
 England PE17 3PN
 Telephone 0487 841400



CAMBRIDGE 27

Your nearest dealer

SPECIFICATION

Length overall	8.2 metres	27 feet
Beam	2.9 metres	9 feet 4 inches
Draft	0.64 metres	2 feet 1 inch
Water Tank capacity	60 gallons	
Fuel Tank capacity	35 gallons	(with single engine)
	70 gallons	(with twin engines)

We reserve the right to amend the specification without prior notice

