

# The Dawncraft "32"

STERN & CENTRE COCKPIT



 **Dawncraft**

*Dawncraft Cruisers Ltd.,  
Nelson Wharf,  
Sandy Lane Industrial Estate,  
Stourport-on-Severn,  
Worcestershire, England.  
Stourport 4511*

# The Dawncraft "32"

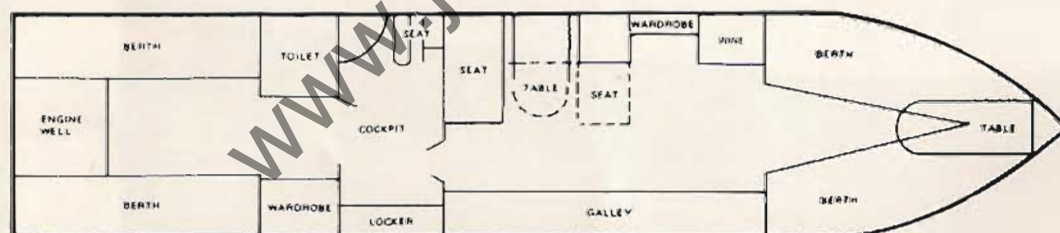
Meet the new DAWNCRAFT 32. The six berth inland cruiser that has got nearly everything. Hot and cold water system, shower, a large galley, 6 berths, enough storage space to suit an army, full headroom, only 14 inches draft, a choice of any engine – inboard or outboard – petrol or diesel all weather protection, and so much room inside that you could easily believe that this is a wide beam boat. Have we thought of everything?

The traditional shape of the famous Dawncraft has been retained but the interior has been re-vamped and re-styled. The toilet has been put in the rear cabin, so avoiding any more embarrassing moments, and just look what those clever people have done with the "dinette". It folds away into an "L" shaped settee, and leaves an incredible amount of space in the centre of the boat where it is most needed.

A wine cabinet has been added to the boat, to give that little touch of luxury together with a wide choice of figured dralon covers for the owner who wants that little extra something the others don't have.

At meal times, there is no problem to seat six people, with four diners sitting at the dinette, and two extra at the pull out table up in the bows, and the preparation of the meal can be simplicity itself with a cooker with an oven and grill, and a very large working surface where all the plates can be laid out at one go for serving up the meal.

The whole boat has the air of space which one expects from a 32ft craft, but which one seldom gets. Who can resist this Dawncraft?



Length 32'  
 Beam 6' 10"  
 Draft 14"  
 Headroom 5' 10"

Fitted out as follows:- Mattresses and curtains: Lights, Sink, H & C water system. Shower. Full size cooker. Folding door. Carpets throughout. Flying bridge and cockpit over. Spotlight. Helmsman's seat.

The Stern Cockpit has the same specification as the craft above, but the layout can be done to the customers own requirements.