

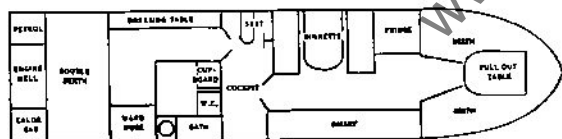
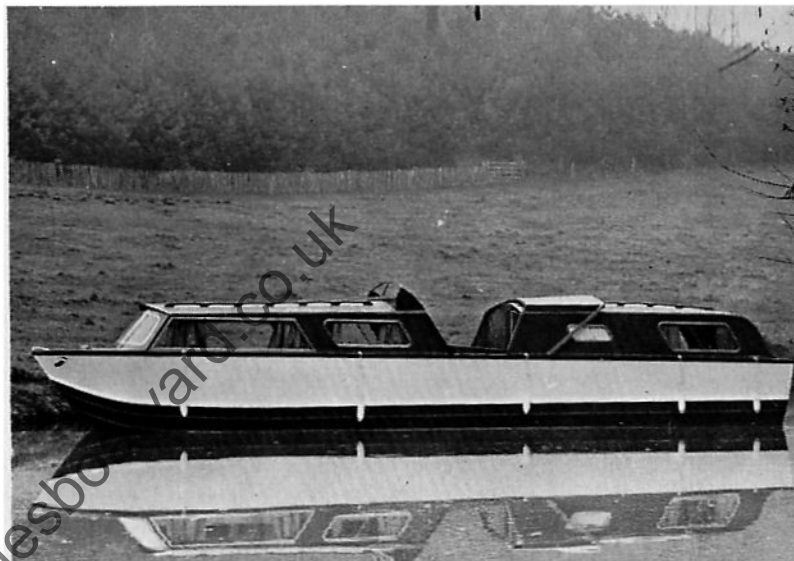
## Built by Dawncraft Cruisers

	Feet	Metres
Length Overall	38'0	11.58
Maximum Beam	6'10	2.08
Cabin Headroom	6'0	1.83

No. of Berths	6
No. of Cabins	3
Constructional materials	Glass reinforced plastics
Hull form	Shallow Vee
Installation	Single

### Standard equipment:

Mattresses, curtains, carpets. Full size Calor cooker, sink and drainer. Flush toilet, fluorescent lights and batteries. Calor gas fridge. Fenders, deck fittings and ropes. Spotlight, mop and boathook, cockpit canopy and sidescreens. Hot and cold running water. Helmsman's seat.



### Comments

The Dawncraft 38 is the largest of the Dawncraft range. The cruiser is built round the three spacious cabins. The dinettes will seat eight people and the galley runs the full length of the fore cabin. The aft cabin, with the owner's stateroom houses a double berth, dressing table, wardrobe and an adjoining bathroom containing bath, washbasin and toilet. A very spacious boat for 6 people, with a choice of layouts available.