

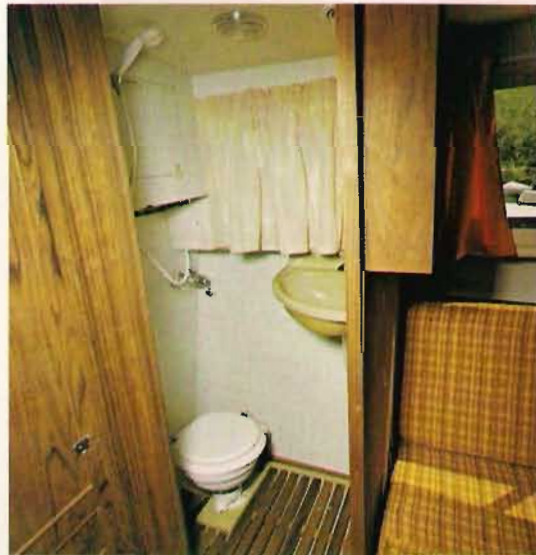
DISCOVERY 850GL



www.jonesboatyard.co.uk

*Lytton
Boat
Building
Ltd*





DISCOVERY 850GL

Step aboard this fine craft and you cannot fail to be impressed at the care that has been taken during the design and building stages to ensure your enjoyment and convenience.

Our well proven Hull design (designed in these works and copied but not surpassed) is equally at home for peaceful river pottering or fast offshore visits to your favourite port. Available with either single or twin engines to suit your particular pleasures. The one piece deck moulding incorporates the large self draining cockpit and with safety to the fore wide safe side decks with moulded toe rail and anti-slip surface. A stainless steel pulpit and handrails are fitted.

Whether your choice is for an open plan or two cabin layout, fully folding sprayscreen and canopy or fixed screen with flying bridge and canopy, both are available.

In both versions the same attention has resulted in restful colour co-ordinated interiors of mellow oiled teak, toning upholstery, carpets and curtains. Delicate smoked shades to the toughened safety glass windows add that touch of elegance that you have always sought but all too frequently appear only on more expensive craft.

Galley and Toilet areas have not been overlooked as the illustrations show with all facilities to hand.

The cockpit area with instruments and controls grouped and positioned conveniently to the helmsman who has excellent all round visibility from the adjustable seat. The cockpit floor comprises three hatches all of which can be removed to allow access to engines, tanks, stern gear etc., complete the craft that we have constructed with care for you to enjoy.



DISCOVERY 850GL

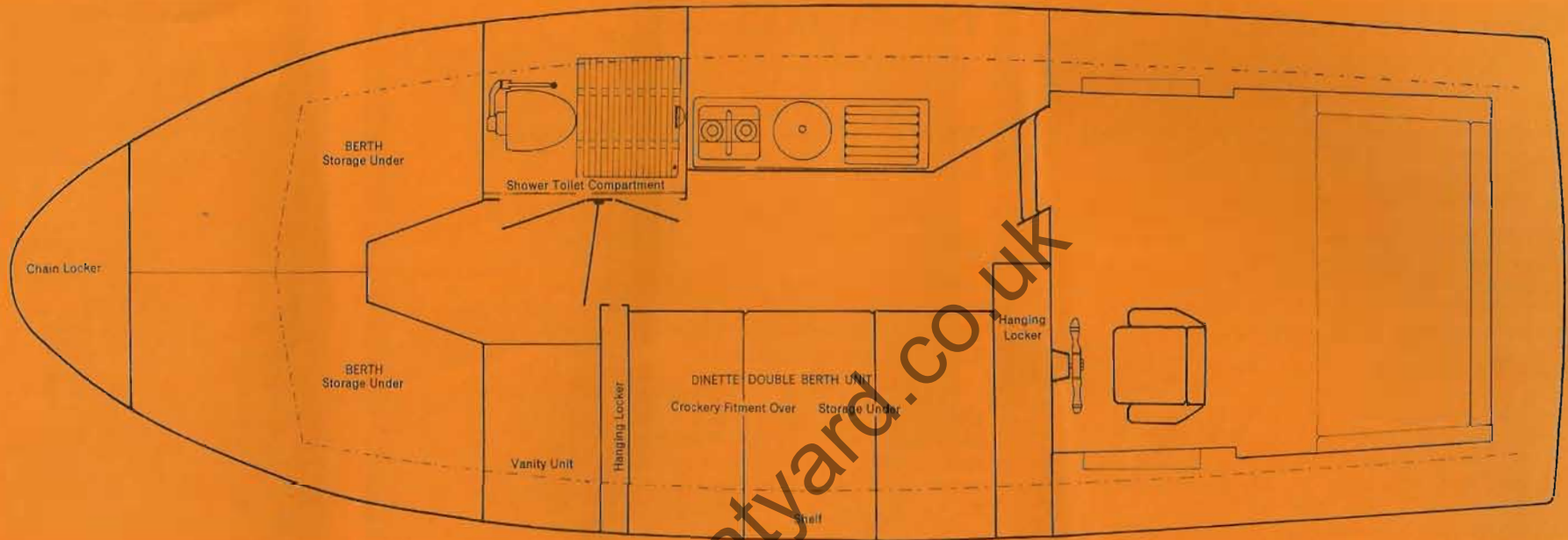


Standard Specification

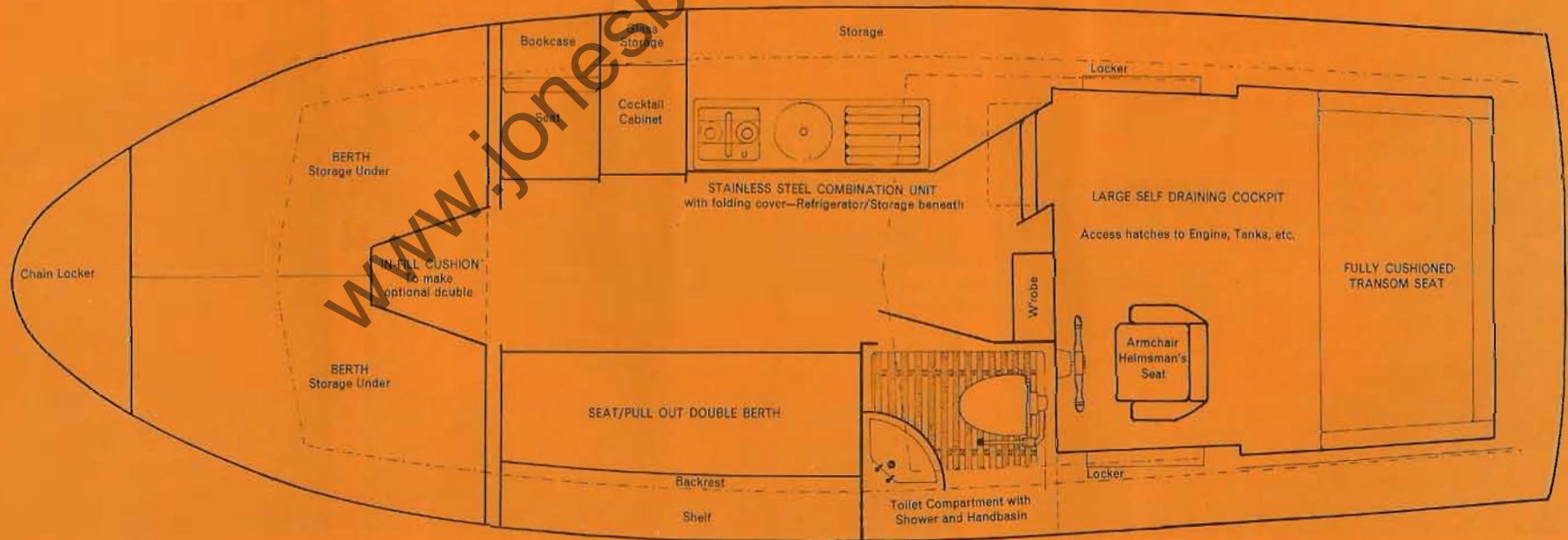
Hull—Superstructure	Moulded in our works under carefully controlled conditions and using only materials of the highest marine quality.
Engine—Gearbox	Our standard installation is the well proven Leyland Thornycroft 90 Diesel Engine of 1½ litre capacity and producing 29-35 B.H.P. Cooling by Heat Exchanger and the whole coupled to a Borg Warner Gearbox. Alternative installations, single or twin are available.
Controls	Conveniently positioned is the Morse/Teleflex Single Lever Control. Steering with Wooden Ships Wheel through Morse/Teleflex Control and Cable.
Instruments	Standard Instrumentation comprises Tachometer (Rev Counter), Oil Pressure Gauge, Water Temperature and Ammeter.
Electrical System	Two 90 A.H. Batteries supply power for Engine Starting and Domestic. Recharged by engine driven Alternator through a Diode Splitter. Lighting comprises Tungsten Filament Lights in Forward Cabin, Toilet and Cockpit with Fluorescent Lighting in Galley and Dining Area. Navigation Lights are fitted.
Windows and Sprayscreen Interior	Tinted Toughened Safety Glass in marine quality Anodised Aluminium frames. Colour co-ordinated and finished to a high standard. All interior woodwork finish is of oiled Teak and the working surfaces in toning "easy clean" laminate. The deck head and cabin sides are fully lined with foam backed Vinyl. Water resistant carpeting.
Toilet and Shower Galley	Shower with Hot/Cold Mixer Unit and Water flush marine Toilet are fitted. Comprises a Stainless Steel combination unit containing two burner stove with grill, Sink and drainer. Hot/Cold Water supply to sink. Electric Refrigerator and ample storage capacity.
Deck Fittings	Stainless Steel Pulpit, Taffrail—Stainless Steel with Teak Rail. Bow Roller, Chainpipe, Fairleads, Mooring Bollard, Aft Deck Cleats and Fender Eyes in chrome-plated brass. Handrails on cabin top and cockpit sides.
Water and Fuel Capacities	40 gallons Fresh Water. 30 gallons Diesel. 10 gallons Calorifier.
Cushions	Material covered 4" Polyfoam in cabins and Vinyl covered in cockpit.
Dimensions	Length overall: 27' 6" Beam overall: 9' 4" Draft: 2' 3" Headroom: 6' 0" Main Cabin Weight: 2.6 Tonnes

www.jonesshoatyards.co.uk

The Privacy afforded with the two cabin layout.



The "Entertaining" spaciousness of the open plan.



Open Plan Layout

Our open plan layout with its area of spacious elegance was designed to provide the requirements for 4/5 living aboard and as many as 8/9 for cocktails or that special day out.

Sleeping accommodation is made up with either two single berths forward (can be a double by use of the infill cushion provided) and a pull-out double berth. A fifth occasional berth is available in the cockpit.

On the starboard side we have the galley area with a Stainless Steel Combination Unit comprising two burner hotplate, Grill, Sink Basin and Drainer. Hot and Cold Water by electric pump, Cupboard space beneath and a 1.6 cub. ft. Refrigerator. All working surfaces are, of course, in stain and heat resistant laminates with an easy clean surface and a folding cover drops down to fully cover your sink/cover unit when not in use.

The encloseable Cocktail Cabinet opens up to provide an easy clean serving shelf with glass storage behind and bottle storage beneath.

The Toilet/Shower Compartment contains a marine type W.C., a wash hand basin and Shower Unit with mixer valve and the floor is covered with a teak grating.

Soft furnishings have been selected to enhance the interior finish of oiled teak and is complete with cushions and Water/Stain resistant carpet.

Two Cabin Layout

At last the two cabin layout that offers a degree of convenience and privacy sought but rarely found in craft of this size.

The forward cabin has two single berths conveniently converting to a comfortable double by using the infill cushion provided. A vanitory unit with wash hand basin, hot and cold water and shaver point. Storage beneath berths and vanitory unit. Separate entry door to Toilet/Shower compartment.

The main Saloon has a Double Berth on the port side that converts into a comfortable dinette at mealtimes and when generally relaxing. A crockery fitment and hanging locker are fitted and there is ample storage beneath the berth units for sleeping bags, etc.

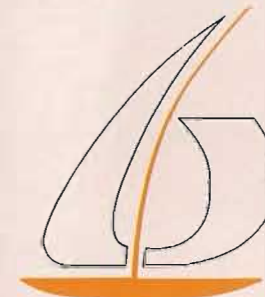
The Galley area is a delight and centres around the Stainless Steel Combination unit that comprises a two burner hotplate and grill, sink and drainer. Hot and Cold Water and ample working area finished in heat resistant easy clean laminate. Beneath is ample locker storage and 1.6 cub. ft. Refrigerator.

The Shower/Toilet compartment, entered from either cabin, is fitted with a "Sea Toilet" and Shower Unit with mixer tap. A teak grating is fitted and Soiled Water is removed by electric pump.

The finish is mellow oiled teak and all soft furnishings have been carefully selected both for quality and to produce the finished warm interior.

Lytton
Boat
Building
Ltd

LYTTON BOATBUILDING LTD.
Appleyard Lincoln Works
Waterside, Ely
Cambridgeshire CB7 4AU
Ely (0353) 4622



The Policy of Lytton Boat Building Limited is one of constant improvement and to take advantage of improvements in materials and/or manufacturing techniques. We therefore, reserve the right to amend specifications and/or prices at any time.





*Lytton
Boat
Building
Ltd*

