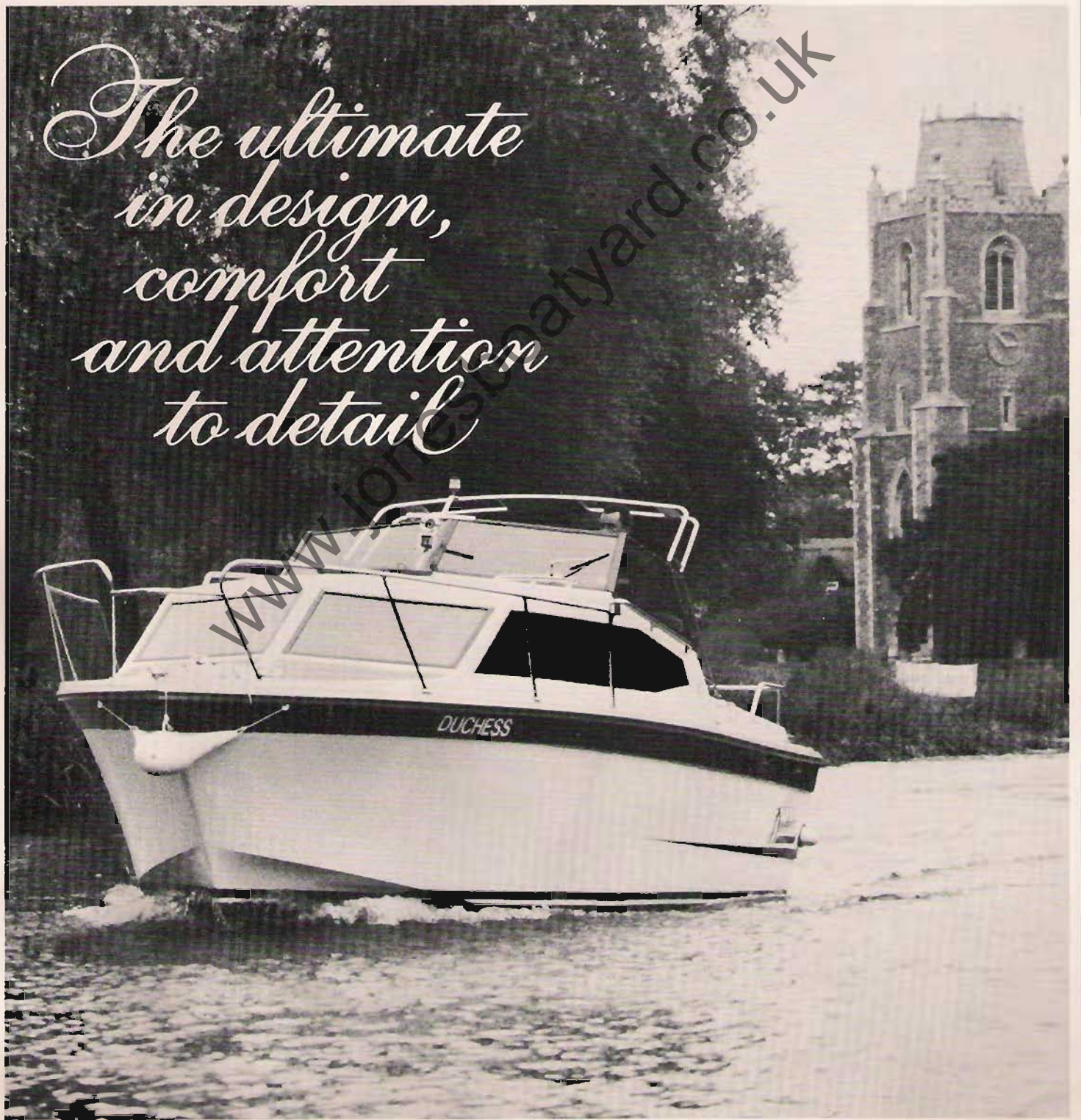
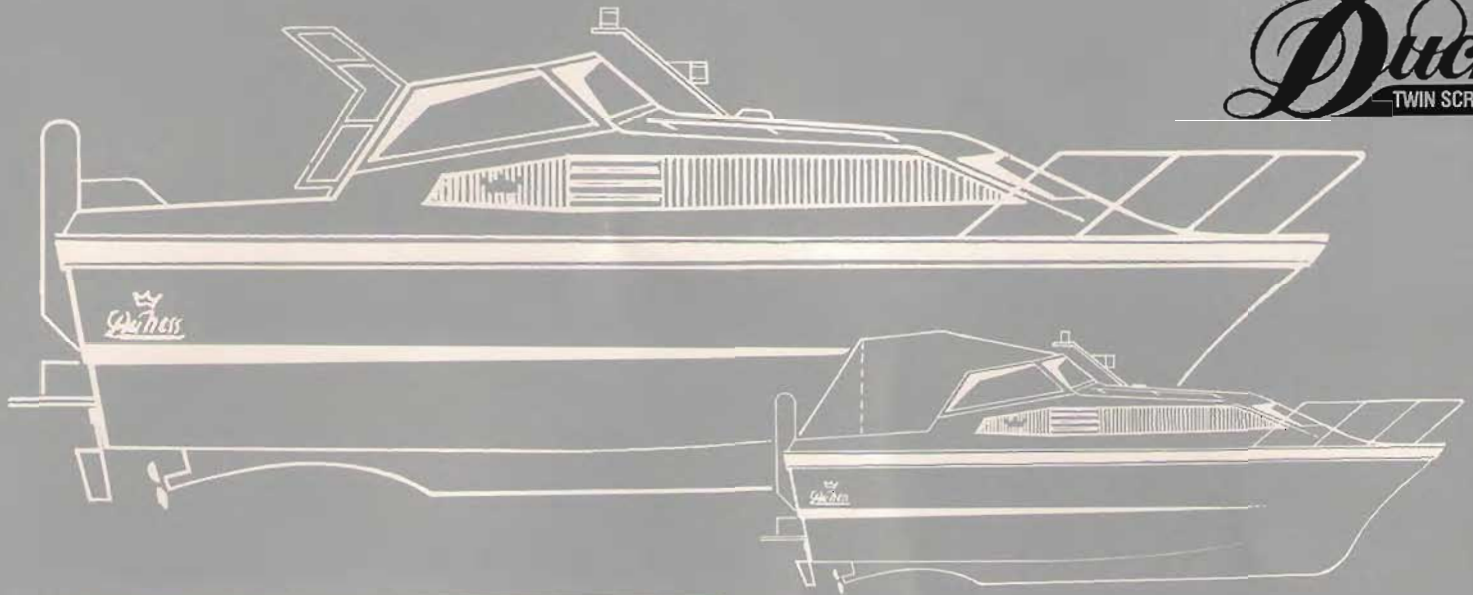


Duchess

TWIN SCREW MOTOR YACHT

*The ultimate
in design,
comfort
and attention
to detail*

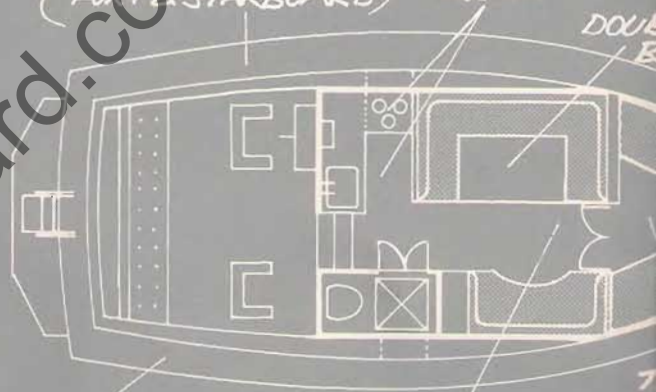




Optional rigid cockpit canopy with removable top.

TWO 30 GALLON STAINLESS STEEL WATER TANKS (PORT & STARBOARD)

GALLEY AREA



TWO 20 GALLON STAINLESS STEEL DIESEL TANKS (PORT & STARBOARD)

OPENING DECK HATCH

PRINCIPAL DIMENSIONS

Length overall	9.00 metres
Length at waterline	6.81 metres
Beam	3.10 metres
Displacement (standard engines)	2700 kg
Draft	.71 metres
Height from waterline to top of screens	2.40 metres
Clearance from waterline with screens folded	2.05 metres
Waterline to top of the folding mast gantry	
Cabin headroom	1.88 metres
Four full berths	Saloon double 1.97 metres
	Forward cabin twin 1.68 & 1.88 metres
	Occasional 1.41 metres
Fuel capacity	270 litres
Water capacity	360 litres
Batteries	Three

ONE MUST GO

Two entirely independent diesel engine installations with conventional drives. Each engine has its own fuel supply, battery, filtered water supply and exhaust.

HOW FAR

At seven knots average cruising, consumption will be under one gallon per hour with the standard 18hp twin engines. With thirty gallons diesel capacity for each engine, the estimated range would be over four hundred miles.

SHOW OFF YOUR HANDLING SKILLS

Impress your friends by manoeuvring in and out of the tightest corners, using the versatility of the twin engines and dual rudder control.

EXPLORE PLACES OTHERS CANNOT GO

With the hood gantry folded down, clearance from water line to top of screen is as low as 95 inches.

For the lower bridges, the folding windscreen option reduces the clearance to a mere 82 inches.

HOME FROM HOME

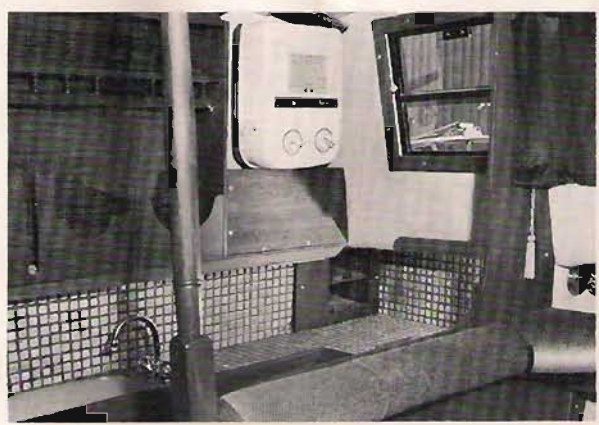
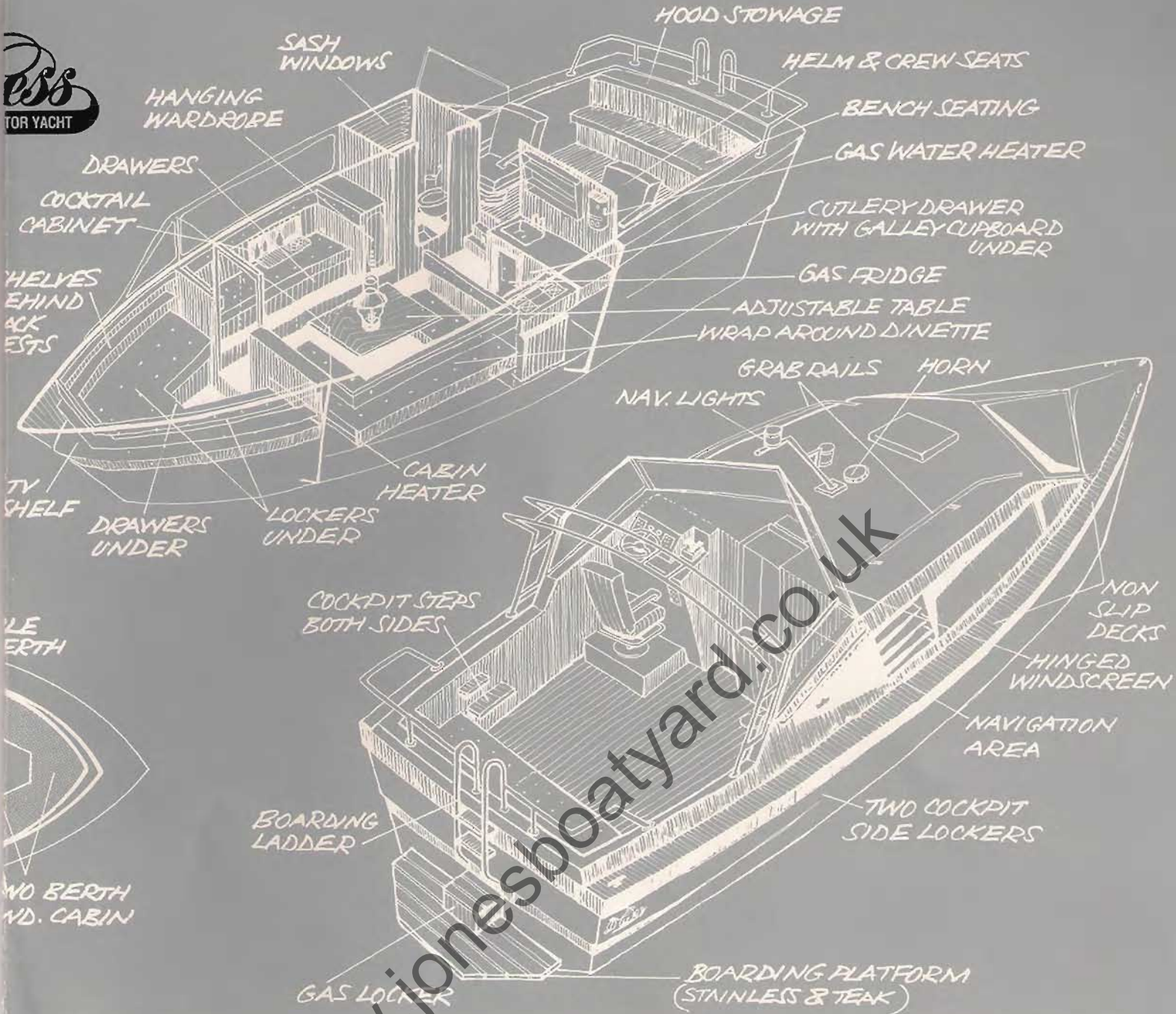
You will love the rich teak and hand-crafted detail of the joinery. The carefully chosen fabrics and furnishings give an immediate sense of comfort and homeliness.

GUEST ROOM

Spacious open plan for day use. A separate forward sleeping cabin is achieved with the use of the optional teak half bulkheads and doors. These are easily removed and stowed aft.

ELBOW ROOM IN THE COCKPIT

Impressive wide side decks with steps from both sides of the cockpit, plus easy access from the transom boarding platform and ladder. Bucket seating for both helmsman and crew plus bench seating. All under the protection of the screen canopy and cockpit hood.



Top left: Duchess under weigh.
 Centre: View showing forward cabin in open plan option.
 Bottom left: Galley area. Note hot water heater.
 Far right: Toilet compartment with wash basin and shower.

SPECIFICATION AND PRICE LIST

White and black colour scheme and class motif
 Hull and deck mouldings in white glass reinforced plastic
 Hull to deck joint GRP bonded
 Extruded aluminium rubbing strakes with black insert
 Black anodised aluminium framed tinted windscreens and cabin windows
 Twin 18hp Volvo 2002 series independent diesel engine installations each with conventional drive
 25mm Shafts with left and right hand three bladed Props
 Dual lever engine controls
 Dual rudder with Volvo steering equipment
 Water intake strainer for each engine
 Water/diesel separator for each engine
 Three batteries in separate lined vented compartment
 45mm exhaust with water lock and goose neck through port and starboard transom flanges
 Removable access floor panels to engine compartment
 Engine compartment vents

INSTRUMENTATION

Twin rev counters
 Twin fuel gauges
 Rudder indicator
 Water gauge
 Windscreen wiper and Horn
 Port, starboard and stern navigation lights
 Steaming lamp
 Nine illuminating & fused switch circuits
 Battery state indicator
 Two Master Battery Isolator switches & Diode

STAINLESS STEEL

Boarding Platform & Transom Boarding Ladder
 Folding hood gantry
 Cabin top and side hand rails
 Pushpit, pulpit and guardrails
 Twin fuel tanks and fresh water tanks

DECK FITTINGS

Stemhead roller and two foredeck cleats
 Two stern and two springer cleats
 Hawse pipe and chain locker
 Non slip to both side and foredeck areas
 Deck filler and breather vents to all four tanks

GALLEY

Three burner gas hob with grill and oven
 Marine fridge
 Gas water heater with vent
 Pressurized water system
 Coloured sink set in worktops
 Chrome mixer taps
 Stainless shield above cooker and water heater
 Food cupboard
 Crockery cabinet and cutlery drawer plus wine rack
 Galley cupboard and trash bin locker
 Turned vertical hand post
 Opening window
 Fire extinguisher and blanket

SALON

Hand built teak interior with buttoned dralon berth cushions
 Curtains
 Wrap round dinette with shelving behind backrests
 Cupboard and berth locker
 Table extension
 Wardrobe
 Occasional seating with shelves behind backrests
 Drawers and berth lockers to starboard
 Cocktail cabinet
 Two turned vertical hand posts
 Wrap round seating to forward cabin with shelves behind backrests
 TV shelf
 Drawers and berth lockers forward
 Adjustable opening glazed hatch in roof
 Teak floor with ash inlay

TOILET COMPARTMENT

Marine chemical toilet
 Stainless wash basin
 Cupboard and bulkhead mirror
 Chrome mixer taps
 Shower and curtain
 Opening window (obscured)

COCKPIT

Helmsman's seat
 Matching lookout seat for Crew
 Aft bench seating
 Screen canopy
 Aft cockpit folding hood
 Hood stowage
 Steps to both side decks
 Two cockpit side lockers
 Gas locker for two bottles
 Fire extinguisher

£41.250

(Deluxe Spec. incl. VAT)

DUCHESS MOTOR YACHT DELUXE SPECIFICATION EX YARD

£41.250
INCLUDING VAT

OPTIONS

Prices including VAT

Twin 28hp Volvo 2003 series diesel engines in lieu of the two standard 18hp	£2500
Twin 43hp Turbo 2003 series diesel engines in lieu of the two standard 18hp	£4500
Alternative fixed Hardtop	£1850
Folding windscreens in lieu of fixed	£290
Marine sea toilet	£215
Stainless toilet holding tank (80 litres) with deck pump out	£325
Removable half bulkheads and doors to separate the forward cabin	£375
Diesel fired ducted air heating in lieu of standard	£1350
Alternative Gas locker in lazarette	£135
Deluxe instrument panels to both engines	£595
Depth sounder and log	£460
Deluxe helm and crew seats in lieu of the standard bucket seats	£365
Epoxy coating to hull	£395
Anti-fouling	£295

MOTOR YACHT £41.250

YACHT & EXTRAS

INCLUDING VAT

SINGLE ENGINE OPTION:

59hp Volvo MD22 diesel engine in lieu of the standard TWIN 18hp engines

SAVING £2600

TERMS OF BUSINESS:

20% deposit with order. Further 50% on completion at workshop. Balance on hand over and commissioning.

POLICY:

As our policy is one of continuous improvement, we reserve the right to alter the specification and prices without notice.

FULL DETAILS & DEMONSTRATION BOOKINGS

L. H. JONES & SON LTD.

The Boathaven, Low Road, St. Ives, Cambridgeshire.
 Telephone: (0480) 494040

YOUR LOCAL AGENT:-

PRINCIPAL DIMENSIONS
 LENGTH 29' || AIR HEIGHT
 BEAM 10' || 6'9" MIN
 DRAFT 2'6" || 8'6" MAX

DUCHESS is British built by

BOATING SCENE

High Road, Laindon, Basildon, Essex, SS15 6DS
 Telephone: (0268) 540405