

MAYLAND MARINER



The Mayland MARINER is an 18ft four berth cruiser, developed to suit the needs of the family man. Its features include a roomy enclosed toilet compartment, large galley area with ample storage space throughout. The hull has simulated clinker planking for added strength and built into the cabin is a hinged hatch for convenient access to the foredeck.

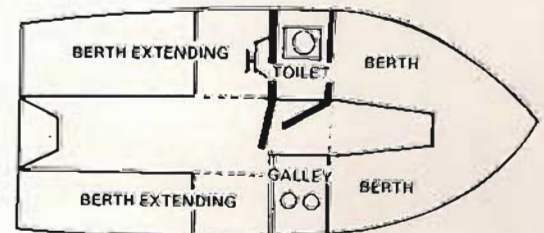
Whilst the MARINER is designed for use in coastal waters and will take outboards up to 60HP she is equally at home with smaller engines for those who prefer to potter.

Standard Fittings include

Teleflex Steering
2 Fairleads
3 Deck Cleats
Windscreen
Winch eye in bows

Mechanical Data

Length 5.50 m (18ft)
Beam: 2.09 m (6' 10")
Headroom: 1.32 m (4' 5")
Weight: 510 k (1124 lbs)



Colours : Any combination of: -

Olive Green
Pastel Green

Anchusa Blue
Golden Sand

Bright Yellow
Navy Blue

Stone
Ivory

White
Brown

Tangerine

MAYLAND MARINE

STEEPLE ROAD, LOWER MAYLAND, ESSEX, CM3 6BE
Tel: MALDON (0621) 740518

