

# Norman 266



6 berth wide beam 27ft coastal & river cruiser



# NORMAN

# Notman 266

6 berth wide beam 27ft coastal & river cruiser





The 266 is a luxurious and safety designed Cruiser. The hull is constructed above normal expectations and the cabin is constructed completely with teak which gives the 266 a feeling of character. The layout has been designed with the family in mind—large table—large toilet compartment and full width berths are just some points that make the 266 the right choice.



# NORMAN

# Norman 266 specification

## Main Cabin

The main cabin has 2 forward V berths which convert to a double if desired. Storage space is situated underneath the berths and a fully upholstered backrest/bookshelves line the berths. A drinks cupboard is situated on the portside and the large table/double berth is aft of this. The table extends to make an extra large table for when 6 people are eating. Upholstered backrests line all the dining area, the table is positioned so that there is full visibility through the side windows. A large wardrobe is also on the portside and comes complete with hanging rail, the wardrobe is full length and can accommodate the longest of garments. The galley is situated on the starboard side and comes complete with pressurised water system, stainless sink and hotplate/grill unit. An oven is situated underneath the galley. Hinged worktops gives extra working space and a cutlery drawer and storage shelves means that there is a place for everything. Shelves and hanging cupboard complete the galley.

A large toilet compartment is situated aft of the galley and this is fully lined in upholstered leathercloth. An elsan portaflush recirculating toilet and hand basin with electric tap is fitted.

The cabin is fully lined with a beautiful easy clean upholstered head lining and comes fully carpeted. Curtains and dividing curtain are standard and the cabin is fully ventilated by sliding side windows and forward ventilating hatch. High quality fluorescent lights are conveniently situated and all seating is covered in easy clean stain resistant Merkalon Fabric.

## Cockpit

The cockpit has a fully instrumented dash panel which hinges to give access to fuse boxes. Stainless steel/teak steering wheel and fully upholstered helmsman's seat make the helmsman comfortable and panoramic vision through the screen makes the 266 a delight to handle. Non-slip floor covering and detachable side lockers give access to the calor gas system.

We reserve the right to alter specifications without prior notice in order to comply with our policy of progressive improvement.



# NORMAN

## Engine Installation

See our specification sheet for details of our comprehensive range of engine installations and inventory.

## Specification

Length –	26' 7"
Beam max –	9' 6"
Draft –	2' 3"
Berths –	6

Side seats convert to an extra double berth or alternatively make a full size double sun lounger. A teakstern rail encompasses the aft of the cockpit and a full headroom cockpit cover gives protection.

## Deck Layout

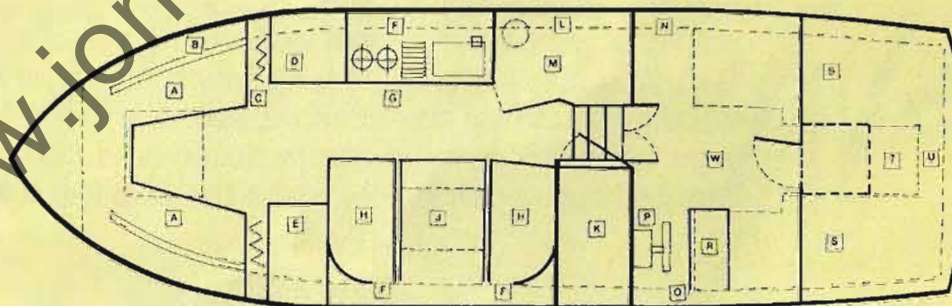
The 266 is supplied with a full range of heavy duty deck fittings including, stainless steel pulpit and grabrails, forward escape hatch, lockable rope locker, fender, eyeplates, horn, spot light, full set of approved navigation lights and non slip decking.

## Aft Cabin Version (optional)

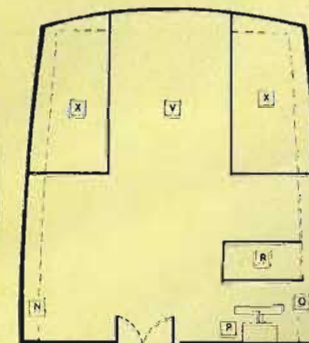
The 266 can be supplied with an aft cabin if desired and this gives 2 full length berths with fluorescent lights and a trim as luxurious as the forward cabin. With this model the aft cabin roof provides a large sunbathing area.

## Key

- A. Berth
- B. Backrest/shelf
- C. Curtain
- D. Drawer/Cupboard
- E. Drinks Cupboard
- F. Shelving
- G. Galley
- H. Seat/Berth
- J. Table
- K. Wardrobe
- L. Shelf
- M. Toilet compartment
- N. Calor gas/storage
- P. Dash panel (Hinged)
- Q. Storage
- R. Helmseat
- S. Berth/Storage under
- T. Aft cabin
- U. Dressing unit
- V. Double Berth Fill in
- W. Engine Compartment
- X. Seat/storage under



Aft cabin version



Aft cockpit version