



# Aft Cockpit or Aft Cabin ENTICE

RLM 32

www.jonesboatyard.co.uk





# RLM



We have chosen to build the Entice on the well proven and seaworthy Senior Marine Sheerline hull. There are two variations on this hull, the Mk. 1 hull is a semi-vee and the Mk. 2 hull which has an 8" deeper vee. Also the superstructure can be raised by 3" if required for additional headroom in the cabin areas.

The R.L.M. is not a mass produced craft, each boat being hand built by its own team of craftsmen. Every craft is built to the same high standard with extensive use of teak veneers and most solid timbers are of Iroka. All teak in the cabins is finished with the finest pure beeswax whilst timbers in the cockpit and exterior are varnished.

Before fitting the teak panelling in the cabins, 2" x 1" timbers are fitted to the sides of the hull to give added strength and reduce condensation. This also assists in keeping the craft cool in summer and warm in winter. Ventilation is also an important factor, and air vents are fitted to all our craft, as well as two hatches, one in the front cabin and one in the main cabin.



## Toilet Compartment

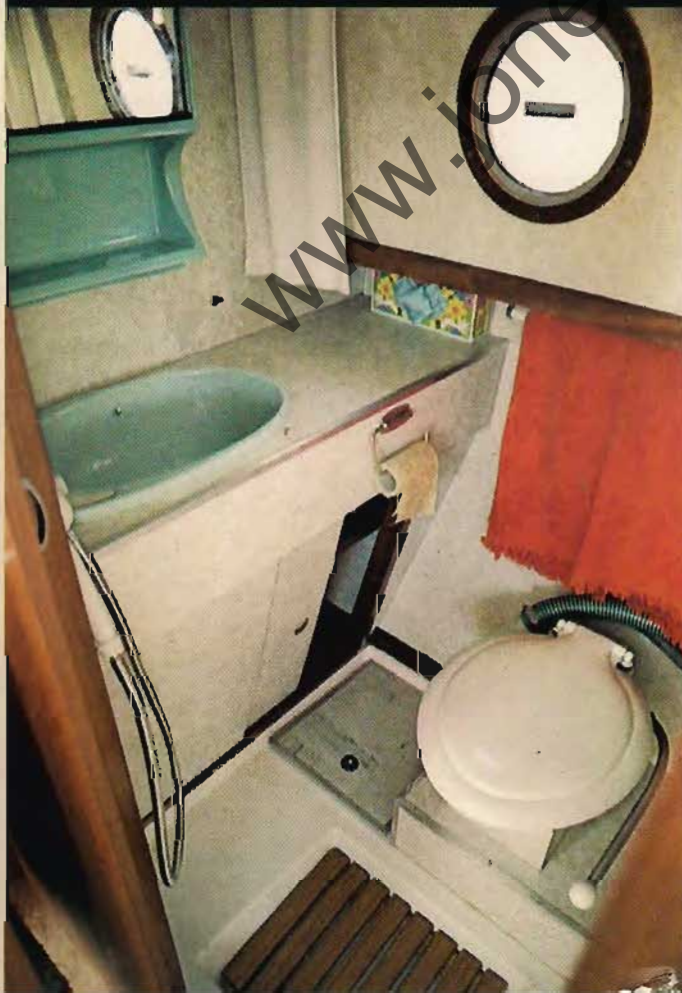
This is finished throughout with wipe down surfaces as the shower unit is also fitted into this compartment. Hot and Cold pressurized water is supplied to the wash basin which is set into a vanity unit with cupboards under. Other standard fitments include, sea toilet, towel rail, toilet roll holder and mirror.

With the many alternatives in layout of this cabin, together with the large selection of upholstery and carpets, each R.L.M. takes on its individual identity. The two cabin layout gives two front berths sited above the 60 gallon water tanks, which are completely

separated from the main cabin by a teak faced bulkhead and do prefer our open plan layout, especially when they have an aft cabin accommodation with a double or two singles in the stern cabin.

here our L shaped dinette, but also available is the dinette set on the side of the table, or the 'U' shaped dinette with a completely free being more popular when a large number of people are likely to be on board. This layout gives a larger amount of seating to the table. This table

In all options the dinette converts to a double berth with a settee. There is good stowage under the berths in the main cabin as well as the settee. The cocktail cabinet is a standard feature, and in the main cabin a hanging wardrobe is fitted into the main cabin, whereas on the two cabin layout a large wardrobe as well as dressing table with a second water. White curtains are hung as standard and an 8 track system





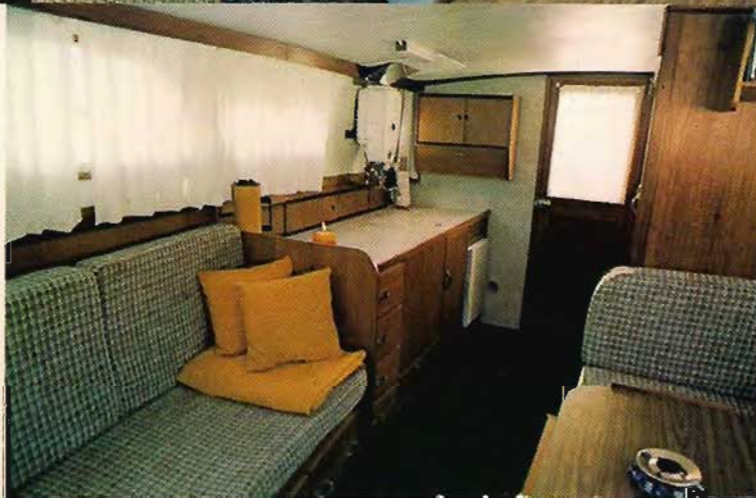
Nobody minds being a galley slave when they have the comfort of our galley. Whether you choose the long galley, as shown here, or the L shaped galley, both are designed for convenience. There is good cupboard and drawer space and the cooker has two burners, oven and grill. This is operated by Calor Gas as is the refrigerator which is neatly tucked away. Hot & Cold pressurized water from the water heater serves the large stainless steel sink and the whole area can be completely enclosed when not in use.



Our Aft Cockpit model offers a large open cockpit with easy access to the Calor Gas box, fitted ready to take two 101b gas bottles and to Thames Conservancy specification. The helm position is to the port side and has good all round visibility. Standard equipment includes echo sounder, compass, searchlight, twin wipers, horns and rudder position indicator. One helmsman seat is provided and at the stern there is luxurious seating and backrest which can convert to an additional berth if required. Twin 48 gallon fuel tanks are stored below the cockpit floor on each side.



or. Many people however  
in model giving separate  
. We have chosen to show  
le with parallel seats each  
standing table. The latter  
e using the dinette as this  
ole can also be completely  
moved when not required.  
ngle berth on the portside.  
ell as a drawer unit under  
ne aft cockpit model a full  
aft cabin model the stern  
sink and cold pressurized  
ereo unit is fitted for your  
musical pleasure.







We aim, in building the Entice, at producing a craft which has all essential equipment on board without too higher price. Engine options include 'Z' drive and conventional installations. If this craft is not quite what you are looking for, maybe one of our other models would suit you better. Our range goes from 27' to 33'.

In this brochure we have tried to give you some idea of our Entice, but obviously it is impossible to anticipate your precise requirements and we would like to have the opportunity of discussing these with you. Our Boatyard at Penton Hook Marina, Staines Lane, Chertsey, Surrey, is open most Saturday and Sunday afternoons and we are there at those times for your convenience and to show you around the craft under construction.

### Aft Cabin Entice

Shown left is our Aft Cabin version with a good sunbathing area on the roof and a catwalk all around the stern. This craft is ideal for those who like to have a completely separate stateroom. The stern ladder and bathing platform shown here is standard on all models of the Entice.



**RLM  
MARINE  
LIMITED**

78/88 Bensham Grove  
Thornton Heath, Surrey  
Telephone: 01-653 7263/5