

Safari 25 MK.II

ALL WEATHER RIVER CRUISER



HAMPTON BOATS LTD

CALDECOTT ROAD OULTON BROAD LOWESTOFT

Telephone Lowestoft 4896



Safari 25 MK.II

25' 7" HULL & SUPERSTRUCTURE DESIGNED SPECIALLY FOR INLAND WATERWAY CRUISING

Formed in 1958, Hampton Boats Limited designed and built high class wooden Broads cruisers, but gradually turned to glass fibre construction because of the many advantages this material offered to both the boatbuilder and owner.

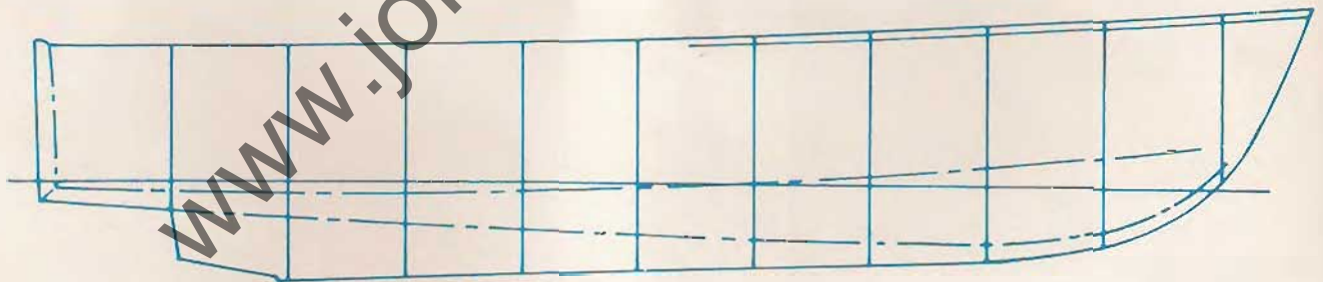
From our past experience the first 'Safari 25' was designed by us and launched in 1968. These craft have since proved to be a really outstanding river cruiser both commercially in the hire fleet and to the discerning private owner.

The Mark II 'Safari 25' incorporates many improvements and gives the ultimate in year round cruising in any weather, with the forward steering position and sliding wheelhouse affording complete comfort, wonderful visibility, and ease of handling.

HULL

The maintenance-free hull of the 'Safari 25' has been designed specially for inland waterway cruising and is an ideal hull on which to base a two/four berth cruiser, which gives a wide scope to the private owner and hire fleet operator.

The chine form hull with long, straight keel gives excellent steering qualities and stability, together with exceptional strength. Being wall sided and bluff at the bow makes for maximum floor area and accommodation. The low freeboard, rounded transom, and soft nose stem is practical for river cruising, and also very pleasing to the eye.



SPECIFICATION

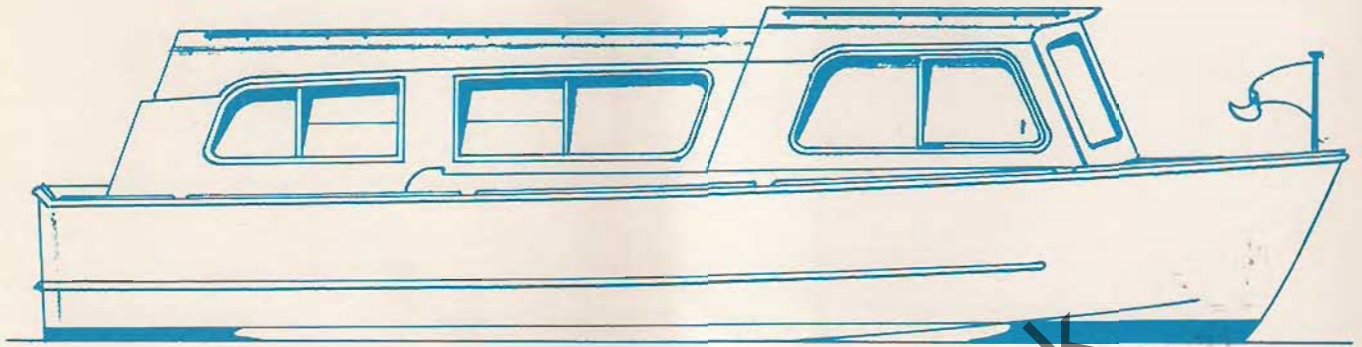
The hull is of single skin construction utilising a rugged chopped strand/woven roving complex and polyester resin. Reinforced with six longitudinal foam bilge stringers to prevent flexing.

Mouldings are available in a standard laminate and a super laminate, which caters for the private owner and hire fleet operator where extra strength is required, although the finish is identical.

The external finish is pigmented white, colours available at extra charge. Internal finish grey.

SUPERSTRUCTURE

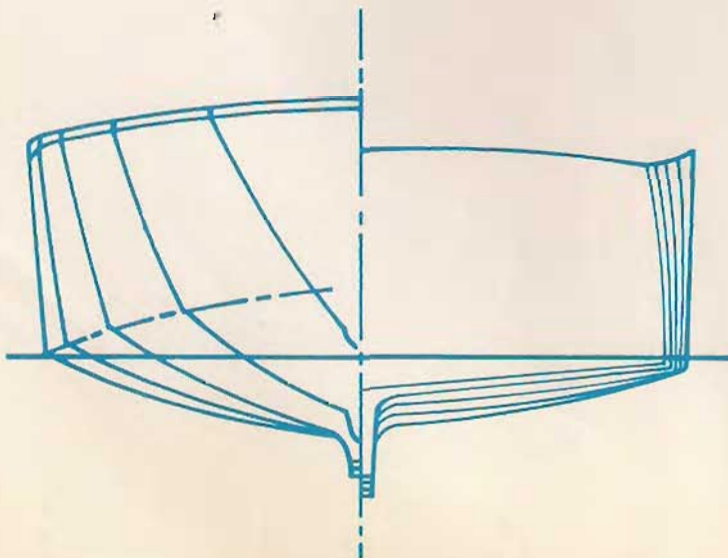
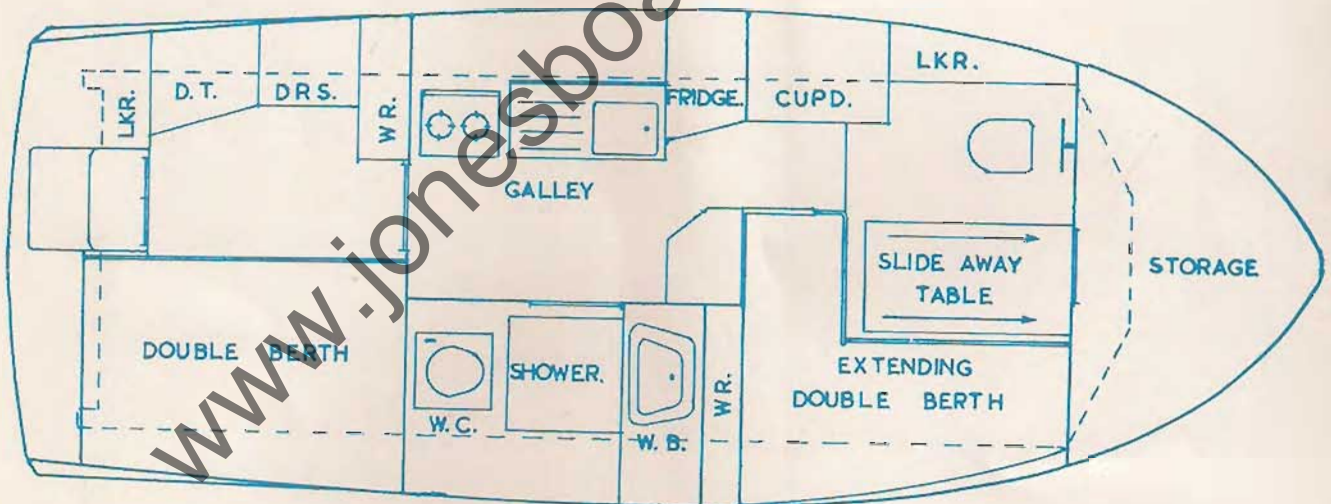
The superstructure has been designed to meet the growing demand for comfort when cruising, all round visibility, and 6 ft. headroom throughout the craft. The wide non-slip decks and handrails along both cabin and wheelhouse give added safety.



SPECIFICATION

The reinforced glass fibre superstructure and sliding wheelhouse is also available in standard or super laminate form, and the deck area, cabin top, and steps are all reinforced with pine stringers for rigidity.

The external finish is pigmented with any of our standard six colour range. Special colours and two colour combinations to customer requirements at an extra charge.



The Mark II 'Safari 25' has many new improvements which have been gained through experience and the following points have been incorporated in the mouldings to aid the boatbuilder:

- Windscreen and base
- Instrument panel recess
- Handrail chocks
- Toe rails
- Mud weight chock
- Non-slip deck pads
- Flat section around sheer line for fixing rubbers
- Hollow section keel to accommodate stern gear
- Aft cockpit with drain point
- Gas bottle hatch and container
- Sliding wheelhouse track
- Cabin top and under deck lining grounds
- Aft cabin door rebate.

DIMENSIONS

| | | | | | | |
|-------------------------|----|----|----|----|----|---------------|
| L.O.A. | .. | .. | .. | .. | .. | 25 ft. 7 ins. |
| L.W.L. | .. | .. | .. | .. | .. | 23 ft. 7 ins. |
| Beam | .. | .. | .. | .. | .. | 9 ft. 6 ins. |
| Draught | .. | .. | .. | .. | .. | 2 ft. 1 in. |
| Displacement | .. | .. | .. | .. | .. | 3.1 tons |
| Tons per inch immersion | .. | .. | .. | .. | .. | 0.4 |

We reserve the right to amend the specification to take advantage of advances in design and construction at any time without prior notice.

Materials and workmanship are of the highest quality and the mouldings are produced under ideal conditions.

Trade Enquiries are invited for special terms for the supply of Hulls, Superstructures and completed craft. Appointments may be made to visit our Works to view the craft in course of construction.

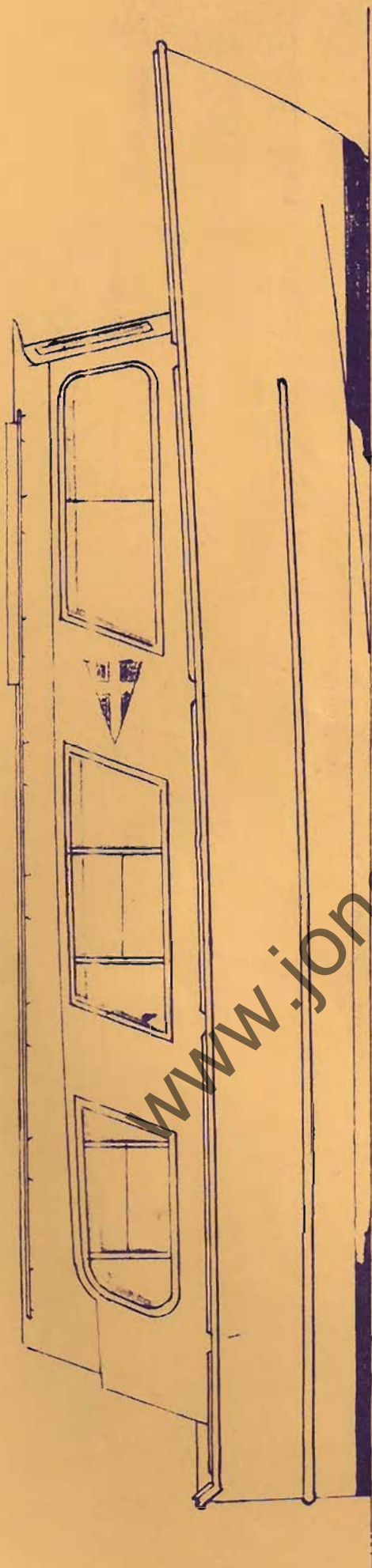
Terms of business as sponsored by The Ship and Boatbuilders' National Federation.

HAMPPTON BOATS LTD

CALDECOTT ROAD OULTON BROAD LOWESTOFT

Telephone Lowestoft 4896





"SAFARI 25" MK. III

SLIDING HATCH / FORWARD COCKPIT VERSION

