

Hartford Marina Ltd Sancerre 33SL

A Yule Catto company.

The Sancerre 33SL is built on the hull and superstructure, designed and moulded by R. Bondon of South Walsham. It offers excellent sea keeping qualities and a choice of engines are fitted – which will give flexibility for inland and coastal use.

G.R.P. exterior provides the owner with a craft which requires the minimum of upkeep and maintenance.

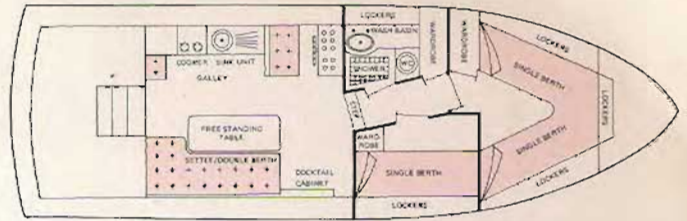
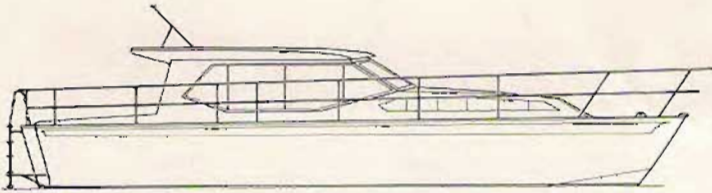
The hull of the Sancerre 33SL is laid up with Scott-Bader double gel, followed by one ounce fibreglass matt all over and 12 ounce matt all over. This is then doubled on the chine, keel section, stem, quarters and transom. One stringer—2" X 1½"—runs around the craft and this is covered by a further 6 ounce matt. This lay-up ensures the hull's great strength throughout and, in places, is over 1¼" thick.

The superstructure is built on similar lines but with four ounce matt, a corrugation of ½" foam on cabin tops and decks, together with a further four ounce matt covering the foam. There is extra reinforcement on the saloon windows and stress points.

The hull and superstructure are built with strength in mind, to stand the roughest sea conditions.

The Sancerre 33SL is fitted out luxuriously and many so-called extras are included as standard equipment. Best quality teak veneer is used on all bulkheads, with a varnish super-smooth satin finish. Good accommodation, stowage space, the luxury of traditional wood furnishing and the elegance of modern styling is all offered in the Sancerre 33SL, due to its skilful design.





Measurements: Length L.O.A. - 33'. LWL - 29'3".
Beam - 10'7". Draught - 2'6".

Weight: Hull and Superstructure - 1 ton 15 cwt.

Hull: G.R.P. Hull moulded by R. Bonden South Walsham.

Superstructure: Self coloured one piece moulding by R. Bonden.

Engines: A choice of engines are available. Marineised with Bowman heat exchanger and combined exhaust manifold.

Fitted with contra rotating Borg-Warner 2 - 1 reduction V Drive gearboxes. Bowman oil coolers are fitted to both engine and gear box. Engines are rated at 120 h.p. maximum intermittent and are finished off to show specification with chrome Rocker boxes.

Instruments: One set of instruments per engine, including water temperature, engine oil pressure and gear box oil pressure gauges, ammeter and tachometer. Dashboard also includes warning lights, hour meters, sunlog and fuel gauge.

Engine Bearers: A mild steel box section is fitted to the craft, this is glassed over and the engines are flexibly mounted on the box section.

Propeller Shafts: 1 3/8" stainless steel.

Propellers: Twin Manganese bronze 18" x 26" handed Aqua-Polse props.

'P' Brackets: Manganese bronze.

Rudders: Twin stainless steel.

Steering: Wagner type N hydraulic steering, fitted under instrument panel, with a 19" chromium spoked wheel.

Fuel Tank: Single fuel tank of 150 gallons.

Water Tank: Stainless steel 65 gallon water tank fitted forward.

Engine Room Ventilation: Natural through ventilation.

Windows: Toughened glass windows in anodised aluminium frames, sliding to port and starboard in main saloon. Escape hatch fitted in forward cabin. All glass tinted green.

Engine Room: Fully noise insulated and fitted with two automatic fire extinguishers.

Hot Water: Supplied by fully insulated 12 gallon calorifier tank piped to starboard engine..

Lights: Forward cabin two berth lights, starboard side cabin one berth light, saloon three berth lights, one cockpit light and one toilet light. Cockpit light fitted with internal and external switches.

Bilge Pump: Electric, automatic bilge pump fitted with manual override.

Electric System: 12 volt throughout, one 12 volt battery to each engine. All systems fused and labelled on separate fuse board.

Bulkheads: Selected teak veneers varnished and polished.

ACCOMMODATION

Galley: Sink unit with combined stainless steel sink top, hot plate and grills with adequate stowage and cupboard space under. Fitted with chrome mixer tap for hot and cold water, calor gas oven, one cubic foot gas refrigerator, fitted with safety cock and built in safety device, vented through port side hull.

Main Saloon: Full length settee/double berth with cushions covered in Dralon. Free standing table, Cocktail cabinet. All flooring covered in deep pile carpet. Pelmet to all windows with silent anodised aluminium curtain track. Cabin linings - Teak - and head linings in best quality linyde, with condensation barrier. Curtains in high quality material fully lined to choice. All joinery teak and satin finished.

Toilet Compartment: Vanitory unit fitted with chrome taps, shower with mixer tap and teak shower tray, one mirror 24" x 18", flushing Headland toilet. Generous storage space with shelves and drawers. Moonstone lamp and electric shaver plug.

Starboard Side Cabin: Single berth with drawers and stowage under, hanging space and ample shelves. Available is a bunk which fits above the berth. The berth cushion is covered in heavy duty cloth material. Side lining foam, covered with cloth. Head lining as Saloon.

Forward Cabin: Fitted safety ventilation escape hatch forward, two single berths with 5" foam mattresses and covered in heavy duty cloth material to choice. Lea boards in teak with storage and two drawers under each. Hull panelling foam, covered with heavy duty cloth material. Windows, curtains and floor covering with clothes rail. Individual berth light and 12 volt socket fitted. Locker space above berths.

Cockpit: Solid teak decking in cockpit, with two removable hatches over engines. Removable hatches over gas bottle storage and rope storage. Removable steps, giving ample access to engines. Two free standing seats with vinyl cushions.

DECK FITTINGS:

Stainless steel pulpit and all round guardrails, fitted with fender carriers. Stainless steel bathing platform and ladder. Stainless steel mast. Stern head roller. Six bollards. Fairleads, fender eyes. High speed anchor winch, 8 fathoms of 5/16" chain, 10 fathoms nylon rope. 25lb anchor. Adjustable hydraulic trim tabs. Twin air horns, twin wipers with washers, navigation lights, search lights, compass, echo sounder and fire extinguisher. Fenders, warps, Ensign and staff.

Calor Gas: Two 10lb gas cylinders are fitted in a sealed metal container with drain through hull. The piping used is copper and the appliances have safety devices.

Colours: Hull and superstructure white (standard), or special to customers' choice at additional cost. Antifouling and boot top line to choice. Cabin headlinings, berth and settee cushions to choice.

Alternative Cabin Layout Available: Drawing on request.

Presented here is a luxury craft, not mass produced. Customers can choose hull and superstructure colours, curtains, carpets etc. Therefore, each craft can be built to the customer's specifications.

The builders reserve the right to alter the specification or layout without prior notice.

Should you wish to examine the Sancerre 33SL more closely, please contact:

Hartford Marina Ltd

A Yule Catto company.

The largest Marina on the Fenland Waterways.

Banks End, Wyton,
Huntingdon, Cambs.

PE17 2AA

Tel: 54574 (STD Code 0480)