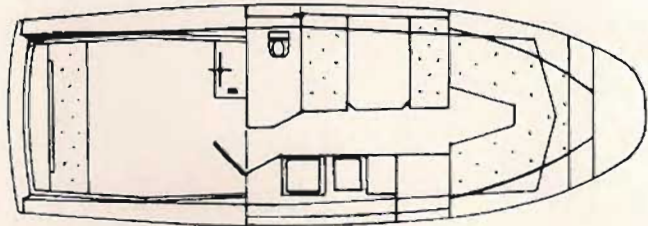


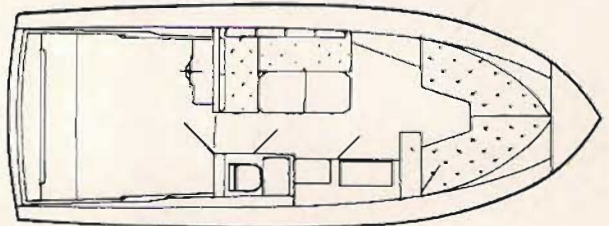
LENGTH 23'10" 7.26M  
 BEAM 9'1" 2.77M  
 DRAFT 2'9" .84M  
 WEIGHT 5000lbs 2272 kg APPROX

## Seamaster Simoon 725



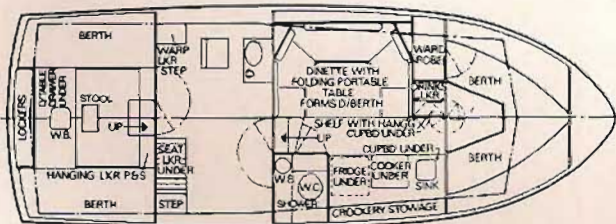
LENGTH 26'8" 8.13M  
 BEAM 9'1" 2.77M  
 DRAFT 2'3" .69M  
 WEIGHT 2.25 TONS 2286 kg APPROX

## Seamaster Zonda 813



LENGTH 26'10" 8.19M  
 BEAM 10'2" 3.10M  
 DRAFT 2'4" .71M  
 WEIGHT 6000 LBS 2721 kg APPROX

## Seamaster Sirocco 820



LENGTH 30'0" 9.14M  
 BEAM 11'6" 3.50M  
 DRAFT 2'8½" .83M  
 WEIGHT 4 TONS 4000 kg APPROX

## Seamaster Norther 30

