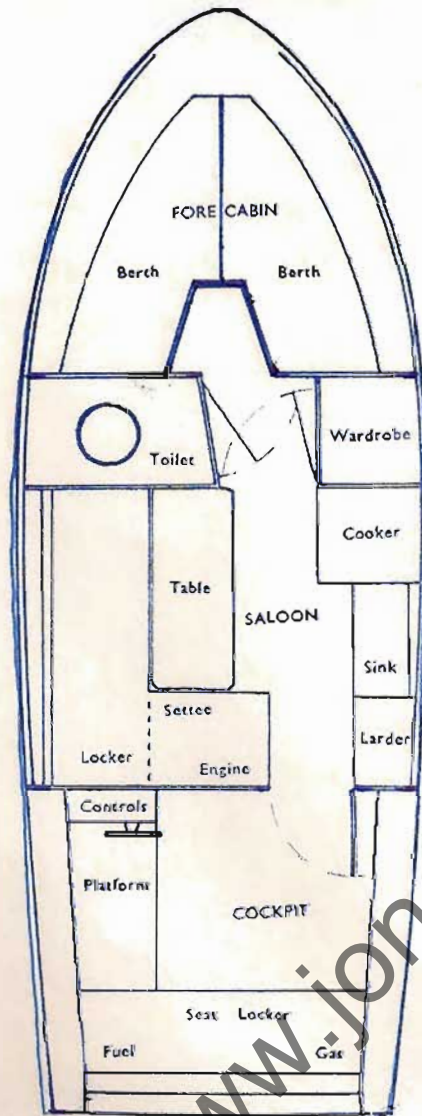


SENIOR 23 4-Berth Inboard Cruiser



Another new model in the Senior range based on the requirements of the modern Yachtsman.

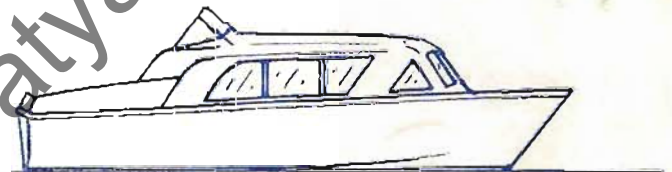
There are two spacious cabins with large panoramic view windows.

The saloon has an 'L' shaped settee which converts to a double berth by lowering the table, the table folds away when not required.

A galley the full length of the saloon with sink unit, gas cooker and ample locker space.

The separate toilet compartment and the wardrobe are larger than in any other craft of this size, and their doors serve a double purpose to isolate the cabins.

The comfortable cockpit has a large seat locker.



Designed by JOHN A. BENNETT

Built of Senior quality glassfibre for long lasting strength and minimum maintenance, with varnished mahogany trim.

Dimensions: 23 ft. 3 in. by 8 ft. 6 in. by 2 ft.

Watermota Sea Wolf 105 E inboard engine is standard, with a 2 to 1 reduction if required.

A Penta MD2 diesel can be fitted if preferred.

SENIOR MARINE LTD

**QUAYSIDE ROAD,
SOUTHAMPTON.**

Telephone: Southampton 27582

**SHIPYARD ESTATE,
BRIGHTLINGSEA, ESSEX.**

Brightlingsea 2080

(31444)