

The *New* Viking 23

Six Berth Family Cruiser



Viking



Mouldings

The Viking 23

The Six Berth

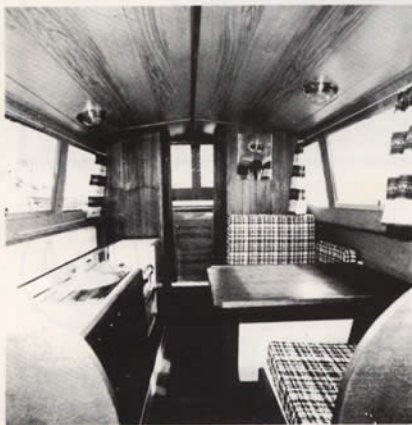
The Viking 23 is the latest addition to our range of boats. Built by craftsmen this new boat offers as good value as the highly successful Viking 20. It is suitably at home on canals, rivers and sheltered estuaries.

The emphasis on this 6'10" beam boat is on comfort and roominess. It has full standing headroom throughout and will accommodate four adults and two children.



The cabin consists of a full size galley of approximately 8' in area with stainless steel sink and draining, with ample water supply, cooker plumbed into gas storage compartment double cupboards under sink with shelves plus additional storage under cooker and ample space for fridge.

The sleeping arrangements are two berths forward with dividing curtain for privacy from main cabin. The dinette table folds down with two additional pullouts to make a double berth, with two extra single berths in cockpit.



h Cruiser that has simply EVERYTHING!

Specification

Available in kit form (hull, superstructure and interior).

| | |
|-------------------------|-------------------------------|
| Length | 22'10" |
| Beam | 6'10" |
| Weight (excl.engine) | 800kg (appx.1742lbs) |
| Draught - 12' | Height above water line 6'11" |
| Headroom in cabin | 6' |
| Berths | 6 |
| Hull shape | Displacement |
| Construction | GRP |
| Maximum outboard rating | 40hp |
| Outboard type | Long shaft |



STANDARD FITTINGS

Canopy
Screen folding
Pulpit
Cushions
Curtains
Toilet
Cooker with fire resistant surround and piped to transome.

1 Flag mast
Mechanical steering and wheel
Cabin floor carpeted
2 Handrails
2 Grab handles
1 Bow eye
3 Cleats
2 Fall leads
4 Fender eyes
1 Water filler cap
1 Drain well bung

1. Single Berth (can be converted to double)
2. Seats
3. Table forms double berth
4. Shower - Toilet
5. Cooker space
6. Stainless Steel Sink
Fridge space
8. Wardrobe
9. 2 Berths
10. Back seat
11. Engine well

Special features of this boat are a large hatch in the roof which gives additional ventilation and 8 toughened glass aluminium framed windows of which two open. The headliner is of a simulated planking with interior lighting, a large boxed-in outboard well is fitted which is designed to cut down engine noise, cabin and cockpit are finished in teak faced ply and the whole boat is lined throughout, with comfortable thick fabric upholstered cushions in cabin and double sided vinyl in cockpit.



Viking Mouldings