



"Shoestring"

Freeman 24

REF: 240

Manufacturer/model: Freeman / Freeman 24

This tidy Freeman 24 is a well presented example of this classic river cruiser.

Boat specification:

- Year: Believed 1979
- Length: 24ft 8in (7.52m)
- Beam: 9ft (2.74m)
- Draught: 2ft 4in (0.71m)
- Airdraught: 7ft 10in (2.39m)
- Berths: 4
- Engine: Ford Watermota Sea Tiger
- Fuel: Petrol
- Drive Type: Conventional Shaft Drive
- BS Cert: 12.05.2018
- Extras: Hot water, sea toilet, electric fridge, shore power, davits, transom platform, anchor and chain



Boat specification (continued):

Construction

- Light brown GRP hull
- Brown gunwhale stripe
- Alloy and PVC upper strakes
- Light brown GRP superstructure
- GRP hard top with sunroof
- Brown acrylic canvas cockpit canopy
- Transom platform
- Davits
-
-

Engine

- Ford Watermota Sea Tiger 4 cylinder petrol engine
- Conventional shaft drive
- Single lever control
- Rev counter
- Temperature gauge
- Voltmeter
- Hour meter reads 1382 hrs
- 2 x 12 volt batteries

Accommodation

- Fore cabin area has 2 v berths
- Storage under
- Shelving either side
- Hatch to deck above
- Hanging locker to port
- Door opens across to separate cabin
- Main saloon has table dinette to port
- Access to engine under aft seating
- Table drops to form double berth
- Storage under
- Toilet to starboard
- Galley to starboard
- Cocktail cabinet against rear bulkhead
- Door aft to cockpit
- Headlinings in cream vinyl
- Upholstery in beige flower patterned cloth (recently replaced)
- Timberwork in Makori high gloss plys
- Carpets and curtains to match

Galley

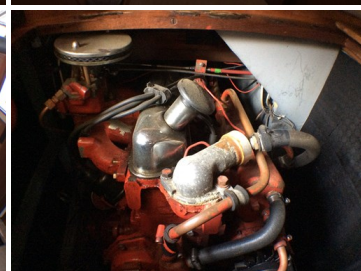
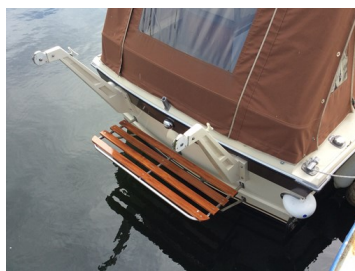
- Gas 2 ring cooker with grill and oven
- Stainless steel sink
- Hot water provided by calorifier from engine
- Engel electric fridge in cockpit
- Storage cupboards
- Formica timber effect work surfaces
-

Toilet

- Corner basin with hot and cold water
- Jabsco sea toilet

Cockpit

- Helm position and seat to port
- Fridge mounted under
- Folding navigator seat to starboard
- Bench seat aft
- Upholstery in ivory vinyl



Demonstrations are only conducted once we have an agreement on price and a 10% deposit has been taken. Once the demonstration has been run we recommend that the boat is surveyed by an independent surveyor prior to purchase. The deposit is fully refundable should the river boat trials or survey prove unsatisfactory in any way. To arrange a river boat demonstration then please contact us on 01480 494040. THIS SPECIFICATION IS INTENDED AS ILLUSTRATION AND DOES NOT FORM PART OF ANY CONTRACT.