



"Sirius"

Dutch Barge

REF: 323

Manufacturer/model: Dutch Barge / Dutch Barge

Traditional Dutch Barge, 1912. She has been refitted by her current owner over the last 5 years with new windows fitted throughout. Last out of the water in spring 2018, she was professionally scrapped and blacked, the hull repainted and the anodes replaced. At that time the hull was professionally surveyed. Asking price recently reduced to encourage offers.

Boat specification:

- Year: [Believed 1912](#)
- Length: [48ft 5ins \(14.93m\)](#)
- Beam: [10ft 8in \(3.25m\)](#)
- Draught: [3ft \(0.91m\)](#)
- Airdraught: [7ft 10in \(2.39m\)](#)
- Berths: [4](#)
- Engine: [BMC 3.4](#)
- Fuel: [Diesel](#)
- Drive Type: [Conventional Shaft Drive](#)
- BS Cert: [TBA](#)
- Extras: [Hot water, wood burning stove with back boiler and radiators, 240 volt fridge, shore power](#)



Boat specification (continued):

Construction

- Rivetted iron hull
- Last surveyed, blacked, new anodes hull re-painted in spring 2018 (pics available)
- Blue painted steel gunwhales
- Painted white steel superstructure
- Steel wheelhouse with acrylic canvas fold back roof
- Blue acrylic canvas side curtains
- Custom built timber framed windows new 2013
- Sunscreen to one side of windows

Engine

- BMC 3.4 diesel engine
- Conventional shaft drive
- Twin lever controls
- Temperature and oil gauges
- 3 x 12 volt batteries

Accommodation forward cabin

- 2 v berths
- Hatch above
- Shower to port
- Toilet to starboard
- Door to main saloon

Main saloon

- Spacious open front area
- Bookshelf to port
- Wood burning stove to port
- Free standing arm chairs and footstools in leather
- Large u shaped galley to port
- Lift up table to starboard
- Door aft to wheelhouse
- Head and side linings in painted timber panels
- Timberwork in mahogany

Aft cabin

- Large lift up hatches from wheelhouse
- Double berth to starboard
- Hanging locker to port

Galley

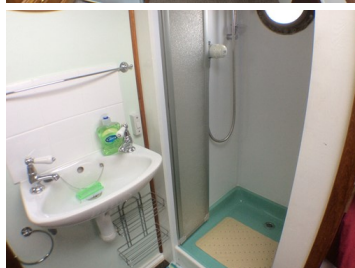
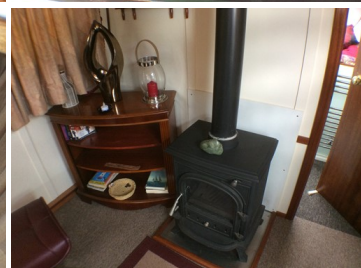
- Stainless steel sink and drainer
- Hot water via calorifier and mains immersion heater
- Vanette 4 ring hob new 2015
- Grill and oven below new 2015
- Cool zone mains fridge
- Generous storage cupboards

Toilet /shower

- Located in front cabin
- Shower compartment to port
- Vanity basin with hot and cold water
- Sea toilet new unused

Wheelhouse

- Helm position and stool to port
- Additional free standing stool
- Free standing table and chair
- Access to engine under



Demonstrations are only conducted once we have an agreement on price and a 10% deposit has been taken. Once the demonstration has been run we recommend that the boat is surveyed by an independent surveyor prior to purchase. The deposit is fully refundable should the river boat trials or survey prove unsatisfactory in any way. To arrange a river boat demonstration then please contact us on 01480 494040. THIS SPECIFICATION IS INTENDED AS ILLUSTRATION AND DOES NOT FORM PART OF ANY CONTRACT.