



JONES BOATYARD
ESTABLISHED 1946



"Lady Hamilton"

Gentlemen's launch

REF: 294

Manufacturer/model: Misc River Boat / Gentlemen's launch

This classic gentlemen's launch was built by H Gibb and son Trowlock Hampton Wick on the Thames. The boat was refitted in 2009 by Rupert Latham of Norfolk to high standards. The boat is fitted with an electric motor for quiet peaceful river use.

Boat specification:

- Year: circa 1930's
- Length: 29ft 4in (8.94m)
- Beam: 6ft 10in (2.08m)
- Draught: 2ft 4in (0.71m)
- Airdraught: 6ft 10in (2.08m)
- Berths: 2
- Engine: Best 4KW electric motor
- Fuel: Electric
- Drive Type: Conventional Shaft Drive
- BS Cert: TBA
- Extras: Electric motor, charging system, chemical toilet



Boat specification (continued):

Construction

- Honduras mahogany carvel hull painted white
- Oak keel
- Varnished mahogany cabin sides
- Painted white cabin roof
- Cabin roof and sides in brown acrylic canvas
- Large cabin windows for excellent vision

Engine

- Best 4KW electric motor
- Conventional shaft drive
- Single lever jockey control
- Wheel steering
- Ammeter
- Battery condition indicator
- Built in Zivan 15 amp battery charger
- 4 batteries
- Approx 6 hours cruising at low throttle

Forward area

- Open plan area
- 2 wicker chairs
- Dining table
- Opening canopy right round this area
- Helm position with seat to port
- Step to starboard
- Door to main cabin

Main cabin

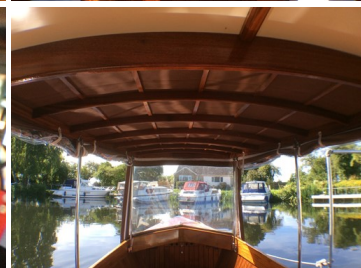
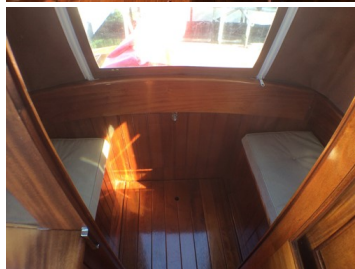
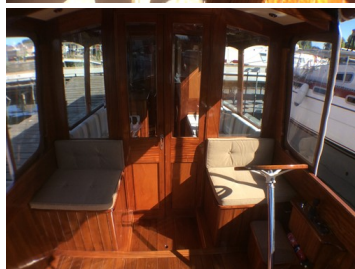
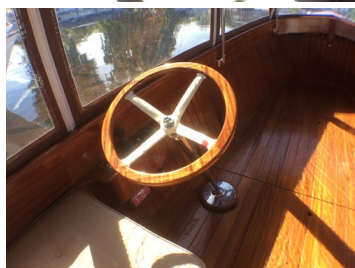
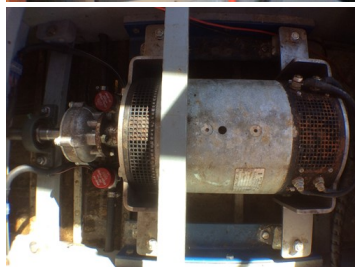
- Bench seating/berthing each side
- Galley aft to starboard
- fitted stainless steel sink
- Pumped cold water supply
- Storage cupboard under
- Toilet compartment to port
- Fitted unused chemical toilet

Interior

- Varnished mahogany tongue and grooved planking forward
- Varnished mahogany flooring
- Fabric striped upholstery to saloon

History

- Lady Hamilton spent a lot of her time on Lake Windermere at Graythwaite Hall and was painted in battleship grey in World War 11 as a home guard boat to protect the Sunderland flying boat factory. The boat was displayed at the Windermere steamboat museum for a while before being commissioned for use on the Thames. The current owners restored the boat and used it on the Gt. Ouse.



Demonstrations are only conducted once we have an agreement on price and a 10% deposit has been taken. Once the demonstration has been run we recommend that the boat is surveyed by an independent surveyor prior to purchase. The deposit is fully refundable should the river boat trials or survey prove unsatisfactory in any way. To arrange a river boat demonstration then please contact us on 01480 494040. THIS SPECIFICATION IS INTENDED AS ILLUSTRATION AND DOES NOT FORM PART OF ANY CONTRACT.