



JONES BOATYARD
ESTABLISHED 1946



"Sarah Louise 2"

Fairline Mirage

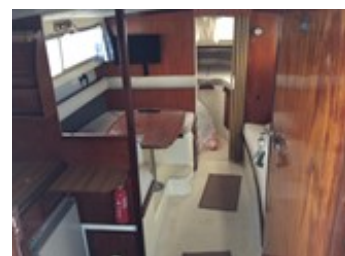
REF: 293

Manufacturer/model: Fairline / Fairline Mirage

This Fairline Mirage was re engined in 2015 and converted to a shaft driven single diesel craft.

Boat specification:

- Year: Believed late 70's
- Length: 28ft 5in (8.66m)
- Beam: 10ft 2in (3.1m)
- Draught: 2ft 6in (0.76m)
- Airdraught: 8ft 4in (2.54m)
- Berths: 5
- Engine: Fiat Airfo
- Fuel: Diesel
- Drive Type: Conventional Shaft Drive
- BS Cert: Oct 2020
- Extras: New canopy, new cooker, split charge relay, 2015 refitted upholstery and carpets, shore power, inverter, new calorifier.



Boat specification (continued):

Accommodation

- Separate forward cabin
- v berth
- Infill panel converts to double berth
- Television
- Storage under
- Hatch to deck above
- Escape hatch window to port
- Storage lockers either side
- Sliding partition door
- Bench seat/berth to starboard
- Table dinette to port
- Table drops down to form double berth
- Storage under
- Toilet aft to starboard
- Head linings in cream vinyl
- Teak ply interior
- Upholstery new 2015
- Teak ply interior
- Blinds to main saloon
- 12 and 240 volt lighting

Engine

- Fiat Airfo 3 cylinder diesel engine
- Conventional shaft drive
- Engine fitted 2014 low hours
- Twin lever controls
- Voltmeter
- Temperature gauge
- Fuel contents
- 3 x 12 volt batteries
- New calorifier
- Autochange gas
- Inverter

Construction

- White GRP hull
- Blue gunwhale stripe
- White GRP superstructure
- GRP wheelhouse hardtop
- Sun roof above
- Stainless steel pulpit and hand rails
- Staunchions to cockpit
- Transom platform
- Ladder down
- New canopy

Cockpit

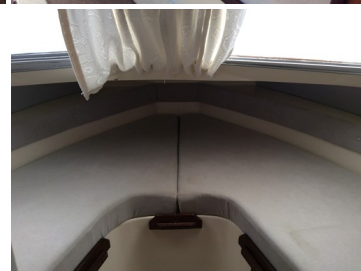
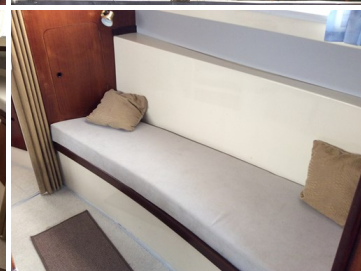
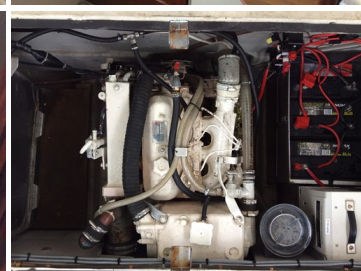
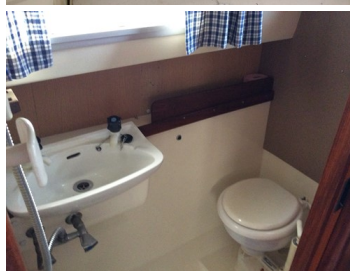
- Helm position and seat to port
- Bench seat aft
- Large storage locker under floor
- Upholstery in white vinyl

Galley

- Stainless steel sink and drainer
- Electric cold water supply
- Gas 2 ring hob, grill oven (new)
- Electrolux 240 volt, 12 volt fridge
- Storage

Toilet

- Fitted sea toilet
- Vanity basin
- Easy wipe vinyls



Demonstrations are only conducted once we have an agreement on price and a 10% deposit has been taken. Once the demonstration has been run we recommend that the boat is surveyed by an independent surveyor prior to purchase. The deposit is fully refundable should the river boat trials or survey prove unsatisfactory in any way. To arrange a river boat demonstration then please contact us on 01480 494040. THIS SPECIFICATION IS INTENDED AS ILLUSTRATION AND DOES NOT FORM PART OF ANY CONTRACT.