



JONES BOATYARD  
ESTABLISHED 1946



"Lady Chaffe"

Seamaster 27

REF: 270

**Manufacturer/model:** Seamaster / Seamaster 27

This seamaster 27 is a vary well presented example of this popular river cruiser. The craft has undergone refurbishment inside and has a separate forward cabin.

**Boat specification:**

- Year: [Believed late 60s](#)
- Length: [26ft 8in \(8.13m\)](#)
- Beam: [9ft 4in \(2.84m\)](#)
- Draught: [2ft 2in \(0.66m\)](#)
- Airdraught: [7ft 10in \(2.39m\)](#)
- Berths: [4](#)
- Engine: [Ford Wortham Blake 4 Cylinder](#)
- Fuel: [Petrol](#)
- Drive Type: [Conventional Shaft Drive](#)
- BS Cert: [2022](#)
- Extras: [CD Stereo, Sea Toilet, 2 Ring, Grill and Oven](#)



## Boat specification (continued):

### Construction

- White GRP hull
- White GRP superstructure
- Blue cockpit canopy

### Engine

- Wortham Blake, Ford 4 cylinder petrol
- Conventional shaft drive
- Twin lever control
- 2 x 12 volt batteries

### Accommodation

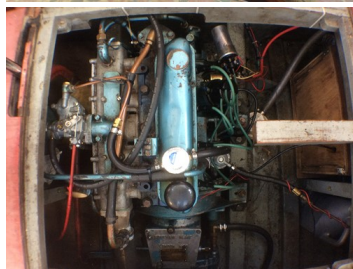
- Separate forward cabin
- 2 v berths
- Door to main saloon
- Galley to starboard
- Toilet to starboard
- Varnished mahogany timbers
- Carpets and curtains to match
- Recently fitted headlinings and sidelinings

### Galley and Toilet

- Stainless steel sink
- Storage cupboards
- Formica work surfaces
- Plastimo 2 ring, grill and oven
- Sea toilet in separate compartment

### Cockpit

- Bench seat aft
- Upholstery in white vinyl



Demonstrations are only conducted once we have an agreement on price and a 10% deposit has been taken. Once the demonstration has been run we recommend that the boat is surveyed by an independent surveyor prior to purchase. The deposit is fully refundable should the river boat trials or survey prove unsatisfactory in any way. To arrange a river boat demonstration then please contact us on 01480 494040. THIS SPECIFICATION IS INTENDED AS ILLUSTRATION AND DOES NOT FORM PART OF ANY CONTRACT.