



JONES BOATYARD  
ESTABLISHED 1946



"Manatee"

Seamaster 27

REF: 271

**Manufacturer/model:** [Seamaster / Seamaster 27](#)

A well presented example of this classic river cruiser which benefits from a new canopy and gas fired heating.

**Boat specification:**

- Year: [Believed late 60s](#)
- Length: [26ft 8in \(8.13m\)](#)
- Beam: [9ft 4in \(2.84m\)](#)
- Draught: [2ft 2in \(0.66m\)](#)
- Airdraught: [7ft 10in \(2.39m\)](#)
- Berths: 4
- Engine: [BMC 1.5](#)
- Fuel: [Diesel](#)
- Drive Type: [Conventional Shaft Drive](#)
- BS Cert: [2021](#)
- Extras: [New canopy](#), [Gas Heating System](#), [Hot and Cold water](#), [Shower](#), [Solar Panel](#).



## Boat specification (continued):

### Construction

- White GRP hull
- White GRP superstructure
- Brand new blue acrylic cockpit canopy
- Superstructure regelled on roof and walkways

### Engine

- BMC 1.5 Diesel
- Conventional shaft drive
- Single lever control
- 2 x 12 volt batteries
- Solar panel charging
- Shore power
- Hot water supplied by calorifier with immersion

### Accommodation

- Separate forward cabin
- 2 v berths
- Infill panel converts to form double berth
- Door to main saloon
- Galley to starboard
- Toilet to starboard
- Varnished mahogany timbers
- Carpets and curtains to match
- Television with DVD
- LED lighting
- Lights in drinks cabinet

### Galley

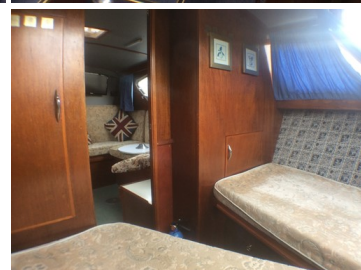
- Stainless steel sink
- Storage cupboards
- Formica work surfaces
- Flavel 2 ring, grill and oven
- 12v fridge (in cockpit under Nav seat)

### Cockpit

- Helm seat to port
- Nav seat to starboard
- 12v fridge under navigators seat
- Fridge mounted under
- Bench seat aft
- Upholstery in blue vinyl
- Colour changing led system

### Toilet

- Sea toilet in separate compartment
- Hot and cold water supply
- Stainless steel sink
- Shower tray



Demonstrations are only conducted once we have an agreement on price and a 10% deposit has been taken. Once the demonstration has been run we recommend that the boat is surveyed by an independent surveyor prior to purchase. The deposit is fully refundable should the river boat trials or survey prove unsatisfactory in any way. To arrange a river boat demonstration then please contact us on 01480 494040. THIS SPECIFICATION IS INTENDED AS ILLUSTRATION AND DOES NOT FORM PART OF ANY CONTRACT.