



JONES BOATYARD  
ESTABLISHED 1946



## "Noble Lady"

Moonraker 30

REF: 300

**Manufacturer/model:** Ocean / Moonraker 30

An exceptionally well presented and well fitted out example of this well built cruiser powered by twin Mercedes diesel engines.

### Boat specification:

- Year: [Believed 1970](#)
- Length: [29ft 9in \(9.07m\)](#)
- Beam: [10ft 2in \(3.1m\)](#)
- Draught: [2ft 6in \(0.76m\)](#)
- Airdraught: [8ft 2in \(2.49m\)](#)
- Berths: 5
- Engine: [Twin Mercedes OM636](#)
- Fuel: [Diesel](#)
- Drive Type: [Conventional Shaft Drive](#)
- BS Cert: [2022](#)
- Extras: [CD Autochanger](#), [Radio](#), [TV](#), [Spotlight](#), [Battery Charger](#)



## Boat specification (continued):

### Construction

- Sprayed GRP hull
- GRP Superstructure
- GRP bathing platform
- Blue acrylic canopy
- Stainless pulpit and stanchion rails

### Engine

- Twin Mercedes OM636 diesels
- Shaft drive
- 12v batteries x3
- Battery charger
- Shore power
- Hot and cold water supplied by calorifier
- Mikuni diesel fired heating
- Gas alarm
- 

### Accommodation

- V berth to bow in seperate compartment
- Storage under
- Table dinette to port
- Table drops to form double berth
- Bench seating to starboard with storage behind
- Upholstery in green patterned fabric
- Carpets and curtains to match
- 

### Galley

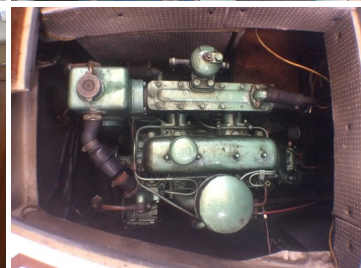
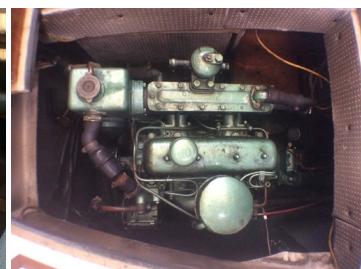
- Sink
- Plastimo 2 ring, grill, oven
- 12v fridge
- Storage cupboards

### Toilet

- Toilet to port side houses sea toilet
- Shower and shower tray

### Cockpit

- Helm and navigators seat
- Shore power
- Bench seating aft
- Upholstery in blue vinyl



Demonstrations are only conducted once we have an agreement on price and a 10% deposit has been taken. Once the demonstration has been run we recommend that the boat is surveyed by an independent surveyor prior to purchase. The deposit is fully refundable should the river boat trials or survey prove unsatisfactory in any way. To arrange a river boat demonstration then please contact us on 01480 494040. THIS SPECIFICATION IS INTENDED AS ILLUSTRATION AND DOES NOT FORM PART OF ANY CONTRACT.