



JONES BOATYARD  
ESTABLISHED 1946



## "Blue Topaz"

Ernecraft Isis 920 Sedan

REF: 300

**Manufacturer/model:** Isis / Ernecraft Isis 920 Sedan

This is a high spec, well built, spacious and light family cruiser which is very well suited to the Great Ouse river system.

### Boat specification:

- Year: Believed 2006
- Length: 30ft 4in (9.25m)
- Beam: 10ft 4in (3.15m)
- Draught: 2ft 6in (0.76m)
- Airdraught: 8ft 4in (2.54m)
- Berths: 6
- Engine: Yanmar
- Fuel: Diesel
- Drive Type: Conventional Shaft Drive
- BS Cert: 20/05/2022
- Extras: Hot water, fridge, diesel warm air heating, radio/cd player, ships radio, shore power, bow thruster, holding tank, depth and speed log, battery charger



## Boat specification (continued):

### Construction

- Blue GRP hull
- Transom door
- Stainless steel railing
- White rubbing strake with stainless steel infill
- Blue Canopy
- Bathing platform with deck shower
- 

### Engine

- Yanmar diesel engine ( 160hp )
- Engine hours read 648
- Shaft drive
- single lever control
- Rev counter, voltmeter, temperature and oil pressure guages
- Fuel and water contents
- Rudder angle indicator
- Hydraulic steering
- Exhaust alarm
- Bow thruster
- 3 x 12 volt batteries

### Accommodation

- Separate foward cabin
- Offset double berth
- Storage to port
- Ensuite door to toilet compartment
- mid cabin opposite galley to port
- Double berth
- door to toilet compartment
- Teak and holly floor throughout

### Galley

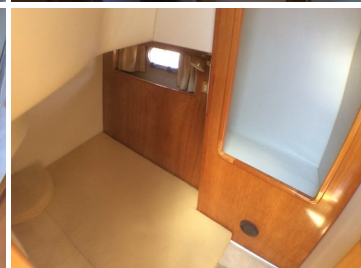
- Stainless steel sink
- Hot water via calorifier and immersion heater
- Waeco electric fridge
- Smev gas 2 ring hob, oven and grill
- Work surface in Avonite

### Cockpit

- Helm position to starboard
- Spacious dinette converts to double berth
- Access to engine bay
- 2 X Sliding sun roofs
- Sedan doors to aft seating area

### Toilet/shower

- Shower with built in shower tray
- Vanity basin
- Sea toilet with diverter valve
- Holding tank
- Interior in easy wipe down white grp



Demonstrations are only conducted once we have an agreement on price and a 10% deposit has been taken. Once the demonstration has been run we recommend that the boat is surveyed by an independent surveyor prior to purchase. The deposit is fully refundable should the river boat trials or survey prove unsatisfactory in any way. To arrange a river boat demonstration then please contact us on 01480 494040. THIS SPECIFICATION IS INTENDED AS ILLUSTRATION AND DOES NOT FORM PART OF ANY CONTRACT.