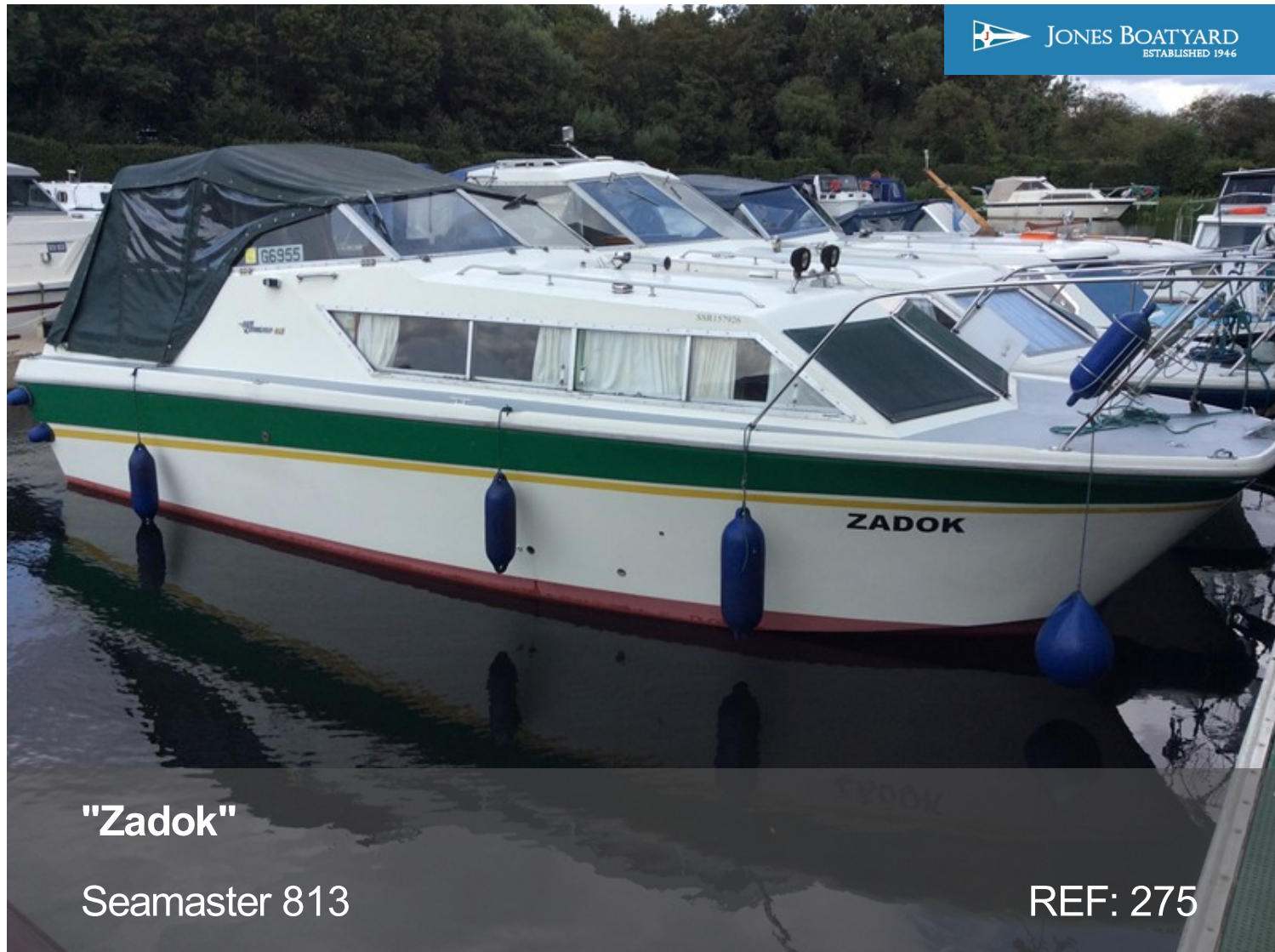




JONES BOATYARD
ESTABLISHED 1946



"Zadok"

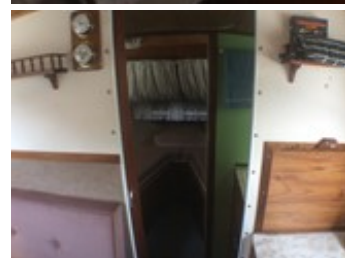
Seamaster 813

REF: 275

Manufacturer/model: Seamaster / Seamaster 813

Boat specification:

- Year: [Believed 1972](#)
- Length: [26ft 8in \(8.13m\)](#)
- Beam: [9ft 2in \(2.79m\)](#)
- Draught: [2ft 4in \(0.71m\)](#)
- Airdraught: [7ft 2in \(2.18m\)](#)
- Berths: [4](#)
- Engine: [BMC 1.5](#)
- Fuel: [Diesel](#)
- Drive Type: [Conventional Shaft Drive](#)
- BS Cert: [16/04/2023](#)
- Extras: [Hot water, double alternators, shower, fridge, anchor and chain, fender bins](#)



Boat specification (continued):

Construction

- White GRP hull
- Green and yellow banding
- White GRP superstructure
- Painted grey non slip decks
- Alloy and PVC strakes
- Stainless steel pulpit
- Stainless steel handrails
- Stern ladder
- Green PVC cockpit canopy

Engine

- BMC 1.5 4 cylinder diesel engine
- Conventional shaft drive
- Fitted double alternators
- Single lever control
- Rev counter
- Oil pressure gauge
- Temperature gauge
- 2 x ammeters
- Battery condition
- Fuel contents

Accommodation

- Separate forward cabin
- 2 v berths
- Infill panel converts to double berth
- Escape hatch window
- Storage under Door aft to toilet shower
- Toilet compartment across width of boat
- Main saloon has table dinette to port
- Half flap table drops to form double berth
- Storage under
- Galley to starboard
- Hanging locker to starboard
- Upholstery in red and blue patterned cloth
- Timber work in varnished teak
- Timber panelled head linings
- Carpets and curtains to match

Galley

- Stainless steel sink
- Hot water via calorifier
- Gas 2 ring ,grill ,oven cooker
- Electrolux gas/electric fridge in cockpit
- Storage lockers

Toilet

- Large compartment across width of boat
- Johnson sea toilet
- Vanity basin to starb
-

Cockpit

- Helm position and seat to port
- Navigator seat to starboard
- Fridge under
- Bench seating aft
- Access under floor to engine



Demonstrations are only conducted once we have an agreement on price and a 10% deposit has been taken. Once the demonstration has been run we recommend that the boat is surveyed by an independent surveyor prior to purchase. The deposit is fully refundable should the river boat trials or survey prove unsatisfactory in any way. To arrange a river boat demonstration then please contact us on 01480 494040. THIS SPECIFICATION IS INTENDED AS ILLUSTRATION AND DOES NOT FORM PART OF ANY CONTRACT.