



"Shooting Star"

Freeman 26

£12,950.00

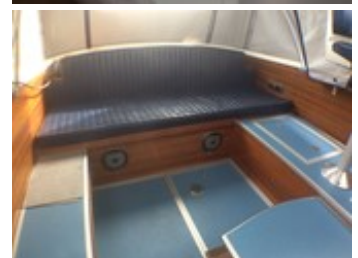
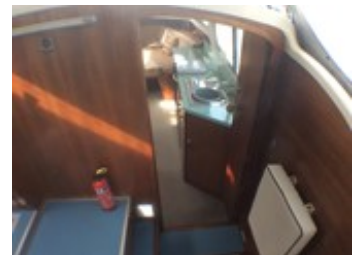
REF: 277

Manufacturer/model: Freeman / Freeman 26

This classic Freeman 26 river cruiser offers 2 comfortable berths, a large galley and generous toilet compartment.

Boat specification:

- Year: Believed late 60's
- Length: 25ft 10in (7.94m)
- Beam: 8ft 10in (2.69m)
- Draught: 2ft 4in (0.71m)
- Air draught: 6ft 8in (2.03m) screens folded
- Berths: 2
- Engine: Ford Watermota
- Fuel: Petrol
- Drive Type: Conventional Shaft Drive
- BS Cert: 08/04/2023
- Extras: Hot water, shower, fridge, shore power, Small inflatable tender with 2 stroke outboard (condition unknown)



Boat specification (continued):

Construction

- White GRP hull
- Painted blue gunwhale stripe
- White GRP superstructure
- Timber lower strakes
- Alloy and PVC upper strakes
- Stainless steel pulpit
- Timber handrails
- Detachable windsreen
- Blue vinyl cockpit canopy

Accommodation

- Open plan
- 2 v berths
- Infill panel converts to double berth
- Storage under
- Hatch to deck above
- Bench seating to port
- Extended galley to starboard
- Large toilet compartment to port
- Door to cockpit aft
- GRP headlinings
- Timberwork in makori ply
- Upholstery in textured brown cloth
- Carpets and matching blinds

Galley

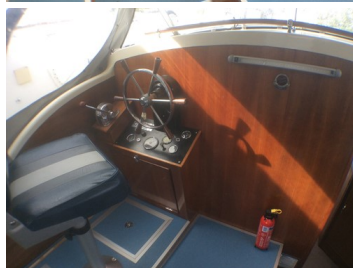
- Extended galley
- Stainless steel sink and drainer
- Hot water via calorifier plus immersion heater
- Extra capacity water tank in bow
- Parker 2 ring, grill and oven cooker
- Isotherm electric fridge
- Green formica work surface
- Storage cupboards

Toilet/shower

- Refitted compartment
- Thetford Porta Potti 465 chemical toilet
- Shower handset
- Moulded shower tray
- Interior in easy wipe white laminates
- Shower curtain

Cockpit

- Helm position to port
- Pedastal seat
- Lift up stool to starboard
- Bench seat aft
- Upholstery in blue vinyl
- Removable dining table
- Many storage lockers
- Blue vinyl flooring with alloy edging



Demonstrations are only conducted once we have an agreement on price and a 10% deposit has been taken. Once the demonstration has been run we recommend that the boat is surveyed by an independent surveyor prior to purchase. The deposit is fully refundable should the river boat trials or survey prove unsatisfactory in any way. To arrange a river boat demonstration then please contact us on 01480 494040. THIS SPECIFICATION IS INTENDED AS ILLUSTRATION AND DOES NOT FORM PART OF ANY CONTRACT.