



JONES BOATYARD
ESTABLISHED 1946



"Wild Garlic"

Birchwood 25

REF: 250

Manufacturer/model: Birchwood / Birchwood 25

The Birchwood 25 is a popular river cruiser which with its wheelhouse hardtop offers helm protection.

Boat specification:

- Year: Believed late 70s
- Length: 25ft (7.62m)
- Beam: 9ft 2in (2.79m)
- Draught: 2ft 4in (0.71m)
- Airdraught: 7ft 10in (2.39m)
- Berths: 4 plus 2
- Engine: Ford Watermota petrol
- Fuel: Petrol
- Drive Type: Conventional Shaft Drive
- BS Cert: TBC
- Extras: Hot water, stereo radio, cooker (new)



Boat specification (continued):

Construction

- White GRP hull
- Timber lower strakes
- Alloy and PVC upper strakes
- Cream GRP superstructure
- Fitted wheel house hardtop with sunroof
- Red vinyl cockpit canopy
- Extended alloy pulpit rail
- Bathing platform
- Davits

Engine

- Ford Watermota 4 cylinder petrol engine
- Conventional shaft drive
- Twin lever controls
- Rev counter
- Temperature gauge
- Voltmeter
- 2 x 12 volt batteries

Accommodation

- Open plan interior
- 2 v berths to forward part of cabin
- Infill panel converts to double berth
- Storage under
- Hatch to deck above
- Storage module to port
- Galley to starboard
- Toilet to starboard
- Table dinette to port
- Table drops to form double berth
- Storage under seating
- Upholstery in green patterned cloth
- Head linings in cream vinyl
-
-

Galley

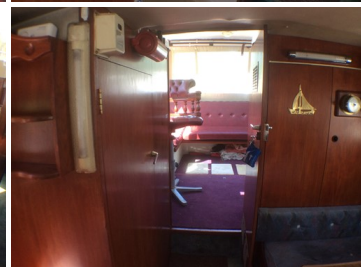
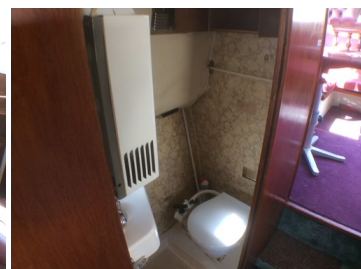
- Stainless steel sink and drainer
- Hot water via paloma hot water heater
- 2 ring, grill and oven cooker
- Storage cupboards

Toilet

- Sea toilet
- Vanity basin with hot water

Cockpit

- Helm position and seat to port (Captain's Chair)
- Navigator seat to starboard (Captain's Chair)
- U shaped bench seating aft
- Rear seat folds out to create extra double berth / sun bed
- Upholstery in red vinyl
-



Demonstrations are only conducted once we have an agreement on price and a 10% deposit has been taken. Once the demonstration has been run we recommend that the boat is surveyed by an independent surveyor prior to purchase. The deposit is fully refundable should the river boat trials or survey prove unsatisfactory in any way. To arrange a river boat demonstration then please contact us on 01480 494040. THIS SPECIFICATION IS INTENDED AS ILLUSTRATION AND DOES NOT FORM PART OF ANY CONTRACT.