



"Aquatic II"

Fairline Mirage Aft Cabin

£34,950.00

REF: 293

Manufacturer/model: Fairline / Fairline Mirage Aft Cabin

This is a well presented and equipped aft cabin Fairline Mirage which has had over £30,000 of work over the past few years. New Volvo diesel engines, dash, windows, canopy, fridge, oven, hatch, carpet. Inflatable dinghy, elec outboard and battery not included but available by negotiation.

Boat specification:

- Year: Believed 1984
- Length: 28ft 8in (8.74m)
- Beam: 10ft 2in (3.1m)
- Draught: 2ft 10in (0.86m)
- Airdraught: 8ft 4in (2.54m)
- Berths: 6 berths in 2 cabins
- Engine: Volvo Penta D2 Diesel
- Fuel: Diesel
- Drive Type: Conventional Shaft Drive
- BS Cert: TBC
- Extras: Bow thruster, GPS, VHF, Inverter, Battery charger, TV, CD Radio, Ebberspacher diesel, heating, shore power, electric flush toilet, spot light.



Boat specification (continued):

Construction

- White GRP hull
- Alloy and PVC upper strakes
- White GRP superstructure
- Blue acrylic canvas cover
- Stainless steel pulpit
- Staunchions to cockpit
- Transom platform
- Transom ladder

Engine

- Volvo D2 4 cylinder diesel (New 2017)
- Conventional shaft drive
- Single lever control
- New dash
- 3x 12 volt batteries
- Hot water supplied by calorifier
- Ebberspacher diesel fired hot air heating
- Bow thruster

Forward cabin

- 2 V berths
- Infill panel converts to double berth
- Hanging locker cupboards ether side
- Sliding partition curtain
- Main cabin has u shaped seating to port
- Table drops to form double berth
- Galley to starboard
- Toilet to starboard
- Timberwork in teak ply
- Upholstery in cream patterned cloth
- New carpets
- Blinds

Aft Cabin

- 2 single berths
- Dressing table between berths
- Vanity basin with hot and cold water supply
- Storage units

Galley

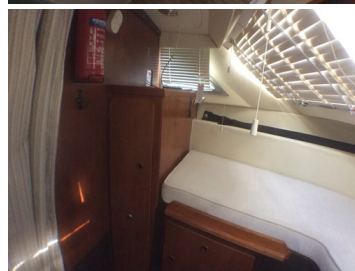
- New SMEV grill and oven cooker
- Stainless steel sink and drainer
- Hot water via calorifier
- Waeco electric fridge
- Storage cupboards

Toilet/shower

- Electric flush toilet
- Vanity basin
- Shower unit
- Shower tray

Cockpit

- Helm position and seat to port
- Navigator seat to starboard
- Large hatch to engine bay
- Sunlounger/ seating above aft cabin
- New upholstery in white vinyl



Demonstrations are only conducted once we have an agreement on price and a 10% deposit has been taken. Once the demonstration has been run we recommend that the boat is surveyed by an independent surveyor prior to purchase. The deposit is fully refundable should the river boat trials or survey prove unsatisfactory in any way. To arrange a river boat demonstration then please contact us on 01480 494040. THIS SPECIFICATION IS INTENDED AS ILLUSTRATION AND DOES NOT FORM PART OF ANY CONTRACT.