



"Reggie "

Freeman 22 mk2

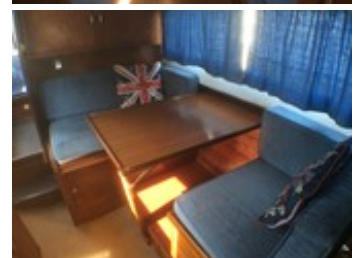
REF: 221

Manufacturer/model: Freeman / Freeman 22 mk2

This is a well presented exaple of this classic river cruiser from the Freeman stable.

Boat specification:

- Year: 1969
- Length: 22ft (6.71m)
- Beam: 7ft 6in (2.29m)
- Draught: 2ft (0.61m)
- Berths: 4
- Engine: Ford Watermota
- Fuel: Petrol
- Drive Type: Conventional Shaft Drive
- BS Cert: 2020
- Extras: Chemcal toilet, cold water supply, Calor 2 ring, grill and oven.



Boat specification (continued):

Construction

- Blue vinyl cockpit canopy
- GRP hull and superstructure
- Rubbing strake
- Stainless steel pulpit rail
- Timber handrail

Engine

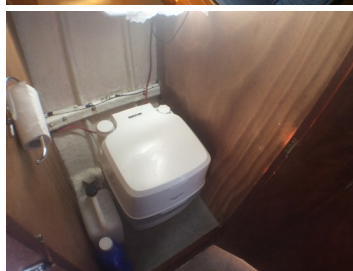
- Ford Watermota petrol engine
- 3x 12v battery
- Temp gauge
- Rev counter
- Voltmeter

Accommodation

- 2 v berths to bow with inserts
- Storage locker under
- Hatch to deck above
- Table dinette to port
- Table drops to form double berth
- Blue cloth upholstery
- Blue curtains
- Toilet compartment to starboard with chemical toilet
- Hanging locker to port
- Galley to starboard
- Calor 2 ring, grill, oven cooker
- Manual cold water supply and acrylic sink

Cockpit

- Blue vinyl bench seating aft
- Helm to port



Demonstrations are only conducted once we have an agreement on price and a 10% deposit has been taken. Once the demonstration has been run we recommend that the boat is surveyed by an independent surveyor prior to purchase. The deposit is fully refundable should the river boat trials or survey prove unsatisfactory in any way. To arrange a river boat demonstration then please contact us on 01480 494040. THIS SPECIFICATION IS INTENDED AS ILLUSTRATION AND DOES NOT FORM PART OF ANY CONTRACT.