



## "Dear Prudence"

Viking 22 Wide Beam

£15,950.00

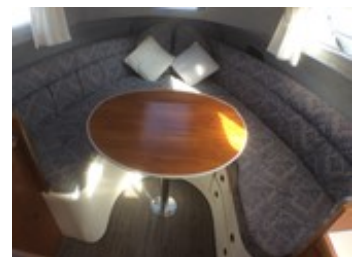
REF: 224

**Manufacturer/model:** Viking / Viking 22 Wide Beam

This is an exceptionally well looked after and well presented example of the Viking 22 wide beam. It is a well designed modern styled river cruiser and fitted with a rare but exceptionally economical Yanmar diesel outboard. Engine fully serviced, anti-fouled and hull polished by LH Jones April 2019.

### Boat specification:

- Year: Believed 1992
- Length: 21ft 7in (6.70m)
- Beam: 7ft 7in (2.3m)
- Draught: 1ft 10in (0.56m)
- Airdraught: 7ft 6in (2.29m)
- Berths: 4
- Engine: Yanmar D27
- Fuel: Diesel
- Drive Type: Outboard
- BS Cert: 2021
- Extras: Hot water, Fridge, Eberspacher diesel heating, shower, chemical toilet, ruddersafe.



## Boat specification (continued):

### Construction

- White GRP hull
- Black PVC upper strakes
- White GRP superstructure
- Stainless steel pulpit hand rails
- Stainless steel hand rails
- Stainless steel twin horns
- Stainless steel mast
- Danforth anchor and chain
- Blue vinyl cockpit canopy

### Engine

- Yanmar D27 AXE diesel outboard
- Electric start
- Ruddersafe
- Single lever control
- 25 gallon inboard stainless steel fuel tank
- 2 x 12 volt batteries
- oil pressure / water temperature multi function warning
- Fuel gauge
- Rev counter
- Engine hour gauge

### Accommodation

- Open plan interior
- Surround seating to fore cabin area
- Cushion backs with shelving behind
- Removable dining table for use in cockpit
- Table drops to form double berth
- Hatch to deck above
- Galley to port
- Storage module with hanging locker to starboard
- Toilet compartment to port
- Transverse double berth under cockpit aft
- Interior finished in teak
- Head linings in white soft vinyl
- Side linings in blue carpet
- Upholstery in blue cloth
- Flooring in new vinyl and recently replaced curtains and matching cushions
- Warm air heating to both cabin and cockpit

### Galley

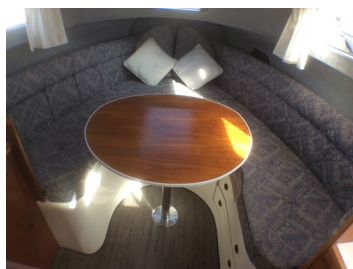
- 3 ring gas hob
- Grill and oven unit below
- Combined stainless steel sink and drainer
- Hot water via Paloma gas hot water heater
- Pressurised shurflo water system fed from twin flexible tanks total capacity 40 gallons.

### Toilet/shower

- Thetford cassette toilet
- Corner basin
- Shower hand set
- Moulded shower tray

### Cockpit

- Helm position and double seat to port fridge under
- Bench seat aft
- Upholstery in white vinyl
- Removable table [from cabin]
- Access to gas locker [2 x 4.5 litre bottles]
- Ritchie compass
- Twin voltmeters



Demonstrations are only conducted once we have an agreement on price and a 10% deposit has been taken. Once the demonstration has been run we recommend that the boat is surveyed by an independent surveyor prior to purchase. The deposit is fully refundable should the river boat trials or survey prove unsatisfactory in any way. To arrange a river boat demonstration then please contact us on 01480 494040. THIS SPECIFICATION IS INTENDED AS ILLUSTRATION AND DOES NOT FORM PART OF ANY CONTRACT.