



"Phoenix"

£28,950.00

Birchwood 33 classic

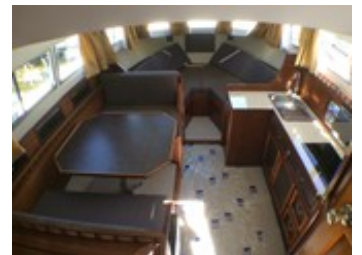
REF: 333

Manufacturer/model: Birchwood / Birchwood 33 classic

The Birchwood 33 is a very spacious aft cabin cruiser which has a built in generator and twin engines. This craft has 2 toilets.

Boat specification:

- Year: Believed 1984
- Length: 33ft (10.06m)
- Beam: 11ft 6in (3.51m)
- Draught: 2ft 8in (0.81m)
- Airdraught: 9ft (2.74m)
- Berths: 6
- Engine: Twin Ford diesel
- Fuel: Diesel
- Drive Type: Conventional Shaft Drive
- BS Cert: 23/07/2023
- Extras: Hot water, shower, fridge, diesel powered heater, Vetus generator, Clipper Duet log, shore power, 40 amp battery charger



Boat specification (continued):

Construction

- White GRP hull with blue bootop
- White GRP superstructure
- Stainless extended pulpit and railing
- GRP wheelhouse hard top
- Blue acrylic canvas canopy
- Stern railing and dodgers to rear deck
- Stern ladder

Engines

- Twin Ford Mermaid 4 cylinder diesels
- Approx 80 hp each
- Conventional shaft drive
- Single lever controls
- 2 x rev counters, oil pressures and temperature
- 3 x 12 volt batteries
- Built in Vetus M2.06 generator

Forward cabin

- Open plan interior
- 2 v berths
- Infill converts to double berth
- Storage under
- Cushioned backrests
- Table dinette to port
- Table drops to form double berth
- Extended galley to starboard
- Toilet to starboard
- Large storage module to port with cabinet
- Interior in varnished mahogany ply
- White vinyl headlinings
- Blue cloth upholstery with yellow pattern
- Carpets and curtains to match
-

Cockpit

- Spacious seating area
- Helm position and seat to starboard
- L shaped seating to port
- Bench seating aft end of cockpit either side
- Door to rear cabin

Aft cabin

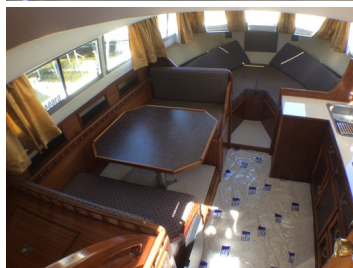
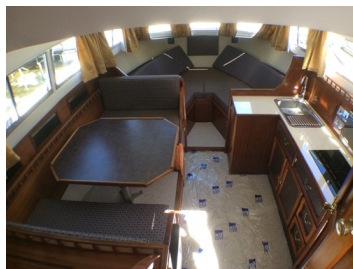
- Transverse double berth aft
- Storage module to starboard
- Toilet to port
- Hanging locker off toilet

Galley

- L shaped galley
- 2 ring mains electric hob
- Micro wave oven
- Stainless steel sink and drainer
- Hot water via calorifier plus immersion heater
- Isotherm electric fridge to port
- Formica work surfaces in cream formica

Toilets

- Forward toilet has Jabsco manual flush toilet
- Vanity basin
- Pull up shower unit
- Shower tray
- Rear toilet has electric flush toilet
- Vanity basin
- Both compartments in white vinyl



Demonstrations are only conducted once we have an agreement on price and a 10% deposit has been taken. Once the demonstration has been run we recommend that the boat is surveyed by an independent surveyor prior to purchase. The deposit is fully refundable should the river boat trials or survey prove unsatisfactory in any way. To arrange a river boat demonstration then please contact us on 01480 494040. THIS SPECIFICATION IS INTENDED AS ILLUSTRATION AND DOES NOT FORM PART OF ANY CONTRACT.