



JONES BOATYARD
ESTABLISHED 1946



"Kingfisher"

Shetland 4 plus 2

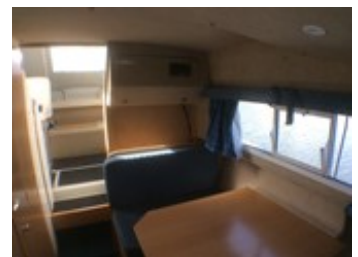
REF: 216

Manufacturer/model: Shetland / Shetland 4 plus 2

This Shetland 4 Plus 2 hardtop is a practical river cruiser with generous accommodation for her compact size.

Boat specification:

- Year: Believed 2004
- Length: 21ft (6.40m)
- Beam: 8ft 2in (2.49m)
- Draught: 1ft 10in (0.56m)
- Airdraught: 7ft (2.13m)
- Berths: 4 plus 2
- Engine: Yamaha 25HP
- Fuel: Petrol
- Drive Type: Outboard
- BS Cert: Mar 2021
- Extras: Shore power



Boat specification (continued):

Construction

- White GRP hull White Grp superstructure Stout grey PVC upper strake Fitted wheelhouse hard top Blue vinyl cockpit canopy Fitted bathing platform Stainless steel pulpit and hand rails

Engine

- Yamaha 25HP 4 Stroke outboard Electric start Single lever control 2 X 12 volt batteries Stainless steel fuel tank Fuel gauge

Accommodation

- 2 v berths to foward cabin Shelving either side Storage under Hatch to deck above Table unit to port Table drops to form double berth Storage under Galley to starboard Toilet to starboard Upholstery in blue patterned cloth Head and side linings in fawn cloth

Galley

- Sainless steel sink Handed pumped cold water supply 2 ring grill cooker Storage cupboards and lockers

Toilet

- Chemical toilet

Cockpit

- Helm position and seat to port Navigator seat to starboard U shaped bench seating aft panel converts this area to double berth if required Under floor storage



Demonstrations are only conducted once we have an agreement on price and a 10% deposit has been taken. Once the demonstration has been run we recommend that the boat is surveyed by an independent surveyor prior to purchase. The deposit is fully refundable should the river boat trials or survey prove unsatisfactory in any way. To arrange a river boat demonstration then please contact us on 01480 494040. THIS SPECIFICATION IS INTENDED AS ILLUSTRATION AND DOES NOT FORM PART OF ANY CONTRACT.