



JONES BOATYARD
ESTABLISHED 1946



"Mirror Image"

Fairline Mirage

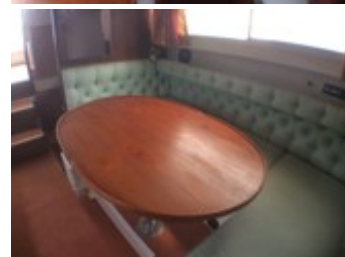
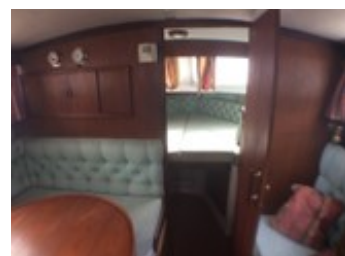
REF: 299

Manufacturer/model: Fairline / Fairline Mirage

This Fairline Mirage is a well presented example, and is one of the later builds. This particular example has twin petrol engines.

Boat specification:

- Year: Believed 1981
- Length: 28ft 5ins (8.66m)
- Beam: 10ft 1ins (3.07m)
- Draught: 2ft 6in (0.76m)
- Airdraught: 8ft 4in (2.54m)
- Berths: 5
- Engine: Twin Volvo 145A
- Fuel: Petrol
- BS Cert: 2016
- Extras: Hot water, shower, fridge, shore power, battery charger, cabin heaters, anchor and winch, bathing platform, davits



Boat specification (continued):

Construction

- White GRP hull White PVC cockpit canopy Light brown gunwhale stripe Stainless steel pulpit rail White GRP superstructure Stainless steel hand rails Fitted hardtop with sunroof Davits Fitted transom platform

Engine

- Twin Volvo 145A 4 cylinder petrol engine 4 x 12 volt batteries Volvo 280 outdrives Volt meter Single lever controls Temperature gauge x 2 1580 hours running Rev counter x 2 Fuel contents

Accommodation and Interior

- Separate forward cabin Galley to port Two V berths to bow Toilet to starboard Infil panel converts V berth to double berth Table dinette to port Storage lockers under V berths Table dinette drops to create double berth Hatch to deck above Storage lockers under seating Hanging locker to port Bench seat/berth to starboard Upholstery in green cloth Hanging locker to starboard Timberwork in oiled teak ply Carpet and curtains to match

Galley

- Stainless steel sink and drainer 2 ring grill oven cooker Hot and cold water supply Engel electric fridge Hot water supplied by Rinnai gas water heater Storage cupboards and lockers Work surfaces in timber effect formica

Toilet

- Vanity basin Par sea toilet Shower unit off taps Finished in easy wipe GRP Moulded shower tray

Cockpit

- Helm seat to port Bench seating area aft Navigation seat to starboard Hatchway in floor gives access to engine bay Cockpit upholstery in white vinyl Removable dining table



Demonstrations are only conducted once we have an agreement on price and a 10% deposit has been taken. Once the demonstration has been run we recommend that the boat is surveyed by an independent surveyor prior to purchase. The deposit is fully refundable should the river boat trials or survey prove unsatisfactory in any way. To arrange a river boat demonstration then please contact us on 01480 494040. THIS SPECIFICATION IS INTENDED AS ILLUSTRATION AND DOES NOT FORM PART OF ANY CONTRACT.