



JONES BOATYARD
ESTABLISHED 1946



"Insight"

Coronet 27

REF: 277

Manufacturer/model: Coronet Cruisers / Coronet 27

This Coronet 27 is a well built spacious Scandinavian classic cabin cruiser. Suited to river and coastal cruising she has been totally re-fitted to a high standard by her current owner.

Boat specification:

- Year: Believed 1969
- Length: 27ft (8.23m)
- Beam: 10ft 4in (3.15m)
- Draught: 3ft 4in (1.02m)
- Airdraught: 8ft (2.44m)
- Berths: 4
- Engine: Twin Diesel
- Fuel: Diesel
- Drive Type: Twin Outdrive
- BS Cert: July 2024
- Extras: Hot and cold water, new Dometic gas hob, new Thetford Duplex built-in oven and grill, new 5kw diesel fired warm air heating system, new sea toilet, shore power, new Victron battery charger.



Boat specification (continued):

Construction

- White GRP hull
- Alloy and PVC upper strakes
- White GRP superstructure
- Blue acrylic canvas cover
- Stainless steel pulpit
- Staunchions to cockpit
- Transom platform
- Transom ladder
- Davits

Engines

- Twin Volvo Penta AQD21A 4 cylinder diesel engines (replaced 2020)
- Volvo Penta outdrives
- Twin lever controls
- 2 x revcounters, temperature gauges
- Fuel gauge
- Outdrives serviced & new bellows 2020

Accommodation

- Large seating area to bow, converts to generous double berth
- Bench seating to port, pulls out to form double berth
- Galley to starboard
- Free standing dinning table
- Led lighting throughout
- Toilet to starboard
- New carpets and side linings
- New roof linings
- Wood work restored and re-varnished

Cockpit

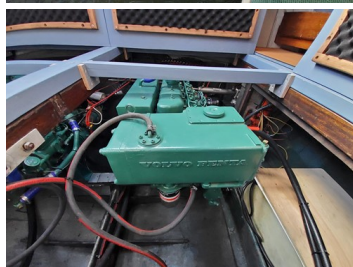
- Large spacious area
- Teak effect flooring
- Helm to port
- New linings to cockpit hard top
- Access to engine bays

Galley

- New Dometic 2 ring gas hob
- New Thetford Duplex built-in gas oven and grill
- Stainless steel sink
- hot water via calorifier
- Mains immersion heater
- Storage cupboards/draws
- Cool box

Toilet/shower

- Sea toilet
- fitted holding tank
- Vanity basin
- Shower unit
- Shower tray



Demonstrations are only conducted once we have an agreement on price and a 10% deposit has been taken. Once the demonstration has been run we recommend that the boat is surveyed by an independent surveyor prior to purchase. The deposit is fully refundable should the river boat trials or survey prove unsatisfactory in any way. To arrange a river boat demonstration then please contact us on 01480 494040. THIS SPECIFICATION IS INTENDED AS ILLUSTRATION AND DOES NOT FORM PART OF ANY CONTRACT.