



"Lady Chaffee"

Seamaster 27

REF: 62

Manufacturer/model: Seamaster / Seamaster 27

The Seamaster 27 is a very popular river cruiser. She has a separate forward cabin and fitted solar panels.

Boat specification:

- Year: [Believed late 60s](#)
- Length: [26ft 8in \(8.13m\)](#)
- Beam: [9ft 4in \(2.84m\)](#)
- Draught: [2ft 2in \(0.66m\)](#)
- Airdraught: [7ft 10in \(2.39m\)](#)
- Berths: [4](#)
- Engine: [Ford Wortham Blake 4 Cylinder](#)
- Fuel: [Petrol](#)
- Drive Type: [Conventional Shaft Drive](#)
- BS Cert: [2026](#)
- Extras: [CD Stereo, Sea Toilet, 2 Ring, Grill and Oven, 4 x 80w solar panels. Fridge, cold water supply, new cushions, covers and curtains.](#)



Boat specification (continued):

Construction

- White GRP hull
- White GRP superstructure
- Blue cockpit canopy

Engine

- Wortham Blake, Ford 4 cylinder petrol
- Conventional shaft drive
- Twin lever control
- 3 x 12 volt batteries
- Rev counter
- Fuel gauge
- Oil pressure and water temp gauges

Accommodation

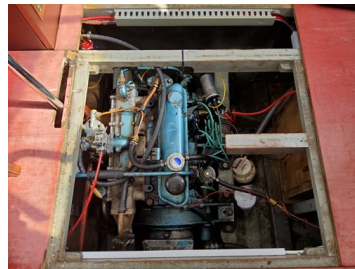
- Separate forward cabin
- 2 v berths
- Door to main saloon
- Seating to port
- Seating converts to double berth
- removable table
- Galley to starboard
- Toilet to starboard
- Varnished mahogany timbers
- Carpets and curtains to match
- White headlinings and sidelinings

Galley and Toilet

- Stainless steel sink
- Storage cupboards
- Formica work surfaces
- Plastimo 2 ring, grill and oven
- Sea toilet in separate compartment

Cockpit

- Helm seat to port (fridge under)
- Navigators seat to starboard
- Bench aft seat



Demonstrations are only conducted once we have an agreement on price and a 10% deposit has been taken. Once the demonstration has been run we recommend that the boat is surveyed by an independent surveyor prior to purchase. The deposit is fully refundable should the river boat trials or survey prove unsatisfactory in any way. To arrange a river boat demonstration then please contact us on 01480 494040. THIS SPECIFICATION IS INTENDED AS ILLUSTRATION AND DOES NOT FORM PART OF ANY CONTRACT.