

L. H. JONES & SON
(Boat Builders) Ltd.
BOAT HAVEN
St. IVES
MUNTINGDON PE17 4ET



*enjoy the fabulous outdoor life
cruising with ...*



Dawncraft



Wilson Cruisers Ltd., Stewponey Lock, Stourton, Nr. Stourbridge, West Midlands. Tel: Kinver 3550.

The Dawncraft "Dandy"

The sun is shining, the birds are singing, the engine is throbbing contentedly and all is right with the world as your new Dawncraft Dandy carves its way through the water. The children are happy after a sound nights sleep in their own separate berths, and the wife is humming a cheerful little tune as she prepares the mid-morning coffee in the galley below, pleased that now she does not have to crouch over the stove and that she can walk about the cabin in an upright manner, instead of crawling around with shoulders hunched like some demented creature because of the low cabin roof.

Then as you sit day-dreaming in the helmsman's seat, the salesman shakes your shoulder and you are brought back to reality.

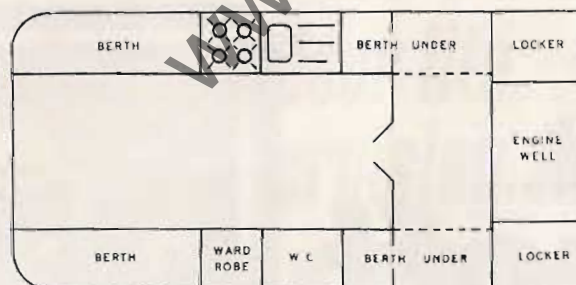
Only to find that your day-dream is reality. And that those people at Dawncraft, had by their clever use of space, managed to get four full berths inside the cabin. Not only that but that there was a galley with a sink and drainer, a full size cooker, a toilet and wardrobe, and enough cupboard space to take all that you would want for a fortnights cruise, and still leave more walk-about space that can be found in some very much larger craft.

There are also a lot of other features, not so obviously apparent as the previous ones mentioned.

Like the tunnel which runs most of the boats length, so that you only need a short shaft engine, which allows you to run in very shallow water. The twin sponsons which add the stability of catamaran to an already stable boat. And the multi-shaped bows for giving a soft ride in rough water.

All of these features, backed by the name of Dawncraft help to make this a superb cruiser.

Fitted out as follows:
 Mattresses — Curtains — Carpets — Electric
 Lights — Oven with Cooker — Sink with
 Drainer — Toilet — Cockpit Cover
 Helmsman's Seat.
 Length 19ft. Beam 6ft. 10ins.: Headroom
 5ft. 6ins.: Weight including Trailer and
 Engine 24 cwt. approx.



Something Special

The DAWNCRAFT 22

Every year we meet people who are about to buy their first cruiser. After a preliminary chat and a quick look over several craft we usually find ourselves sitting down in the cabin of a DAWNCRAFT "22" talking business. Why the "22"? Because this craft has everything you need to take up cruising seriously on a reasonable budget.

She sleeps four in comfort and will be equally at home on week-end trips to Tewkesbury and Torquay or a two-week cruise from the Thames to the Trent. The three DAWNCRAFT essentials are here, headroom, ventilation and privacy, and the accommodation is arranged for spaciousness.

There are not many small cruisers in which you can stand up at the galley and cook a meal, but this is one. The full size calor gas cooker, at proper working height, will cook any number of appetising meals while cruising. The galley tap pumps fresh water up from a plastic container and a fitted Perspex sink bowl with plug and a waste pipe takes care of all your washing up problems. Included in the galley are a food cupboard with sliding doors and a wide shelf for utensils and water containers.

Serving a meal is simplicity itself. Only an arm's length away from the galley is the dining table. This slides up under the bows when not in use. A family of four can sit down to a meal, with a view through the panoramic forward window.

A special feature of the DAWNCRAFT "22" is the cockpit flying bridge. Under this flying bridge you can cruise in comfort through the wildest weather and, of course, it makes a second cabin at night. It also provides full headroom and includes a wide, forward windscreen for the skipper, and on hot days the whole unit folds over on to the cabin roof.

Standing headroom, sliding glass windows, a separate toilet compartment, and a wardrobe complete with DAWNCRAFT 22 inventory. The raised cockpit floor provides a large amount of stowage below decks and gives the skipper a good all-round command of his craft.

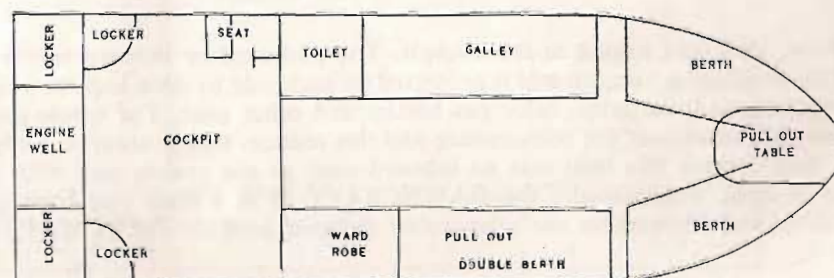
Length 22ft., Beam 6ft. 10ins., Weight 22cwt., Headroom 5ft. 10ins., Draft 14ins.



Fitted out as follows:

Mattresses and curtains. Electric lights.
Sink and Water Pump. Spotlight.
Full size cooker and fittings.

Elsan Toilet. Flying Bridge and cockpit cover.
Folding space saver door.
Helmsman's seat. Carpets in cabin.



For the First Mate

The DAWNCRAFT 25

Spare a thought for the FIRST MATE — Chef, Bottle Washer, Bow Hauler, Hostess, Lock Wheeler, Galley Slave and General Factotem, all rolled into one. Usually she's the little lady who took you on for better or for worse, and who performs miracles of organisation down below while you are busy up on the bridge commanding the ship.

Ask her today to describe her dream cabin. We respectfully suggest that you may get an answer something like this, "Well for a start, I'd like a really big galley with a long worktop for preparing meals, and lots of cupboards underneath to store the food. I'd love a big, comfy dinette, so convenient for sitting you all down to lunch and so nice to lounge in. Then it would be heaven to have a real wardrobe for all our clothes. Darling, if only . . ."

At this point you should, with masterly timing, produce a lay-out of the DAWNCRAFT 25, saying nonchalantly, "How would this suit you for next season?" Your popularity and esteem will know no bounds. Like the knowledgeable and discerning Skipper you are, you will have provided the answer to a FIRST MATE'S prayer.

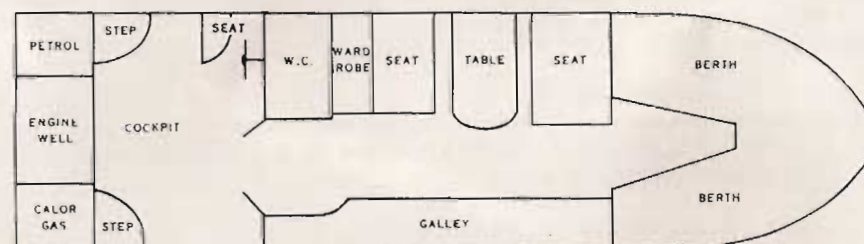
Just consider these points. The DAWNCRAFT 25 has a galley 10 feet long with an immaculate worktop running from bulkhead to bulkhead. Cupboards underneath have sliding doors and enough shelves for a fortnights provisions. The dinette is luxuriously upholstered with four inch deep cushions and converts to a wide, double berth at night.

Sliding windows bring light and fresh air into all parts of the large cabin. The two forward berths are separated at night by shutting the folding space-saver door.

Now, let's take a look at the cockpit. The outboard or inboard motor is fitted on an inboard transom and is protected on each side by deep lockers which hold petrol tanks, batteries, calor gas bottles and other gear. The whole stern assembly is decked over for convenience and this reduces motor noise to a minimum. You'd think this boat was an inboard craft as she cruises past with no engine in sight. Undoubtedly the DAWNCRAFT 25 is a craft you must get acquainted with. Remember she's the cruiser designed with the FIRST MATE in mind.



Length 25ft., Beam 6ft. 10ins.,
Weight approx 32cwt., Headroom 5ft. 10ins.,
Draft 14ins., Fitted out as the Dawncraft 22



The Sunseeker

The DAWNCRAFT 27

The superbly, scintillating, "Sunseeker", is one of the new boats to be brought into the ever-expanding range of DAWNCRAFT.

So you want a larger than usual cockpit to give you all the fresh air you need, room to throw out a line when fishing without hooking the wife, or just a lot of space. Then this is the boat for you, Sir.

The cockpit offers nearly 40 square feet of floor space which is ample for all outdoor activities. But the cabin is by no means stinted. There is still sleeping accommodation for four people, the stowage and cooking facilities will still delight the first mate, and the separate toilet and wardrobe lose nothing.

The glass fibre cabin and side decks mean that endless hours will not be spent sanding and re-varnishing for appearance sake, and the polished aluminium framed windows, which are on all DAWNCRAFT give an abundance of fresh air and sunlight.

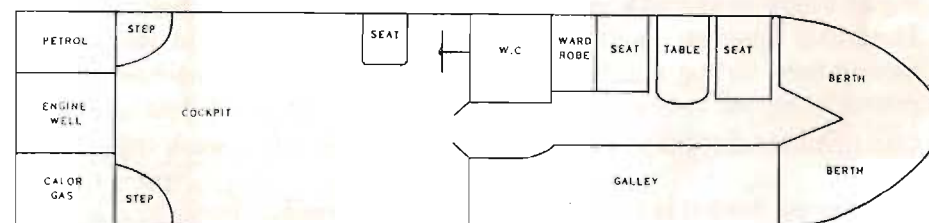
If you want a boat that is different, the "Sunseeker" must be the one to fill the need.

Watch the envious glances as you cruise past the folk who have to stand up in the cockpit because there is no room to sit down, when they see your family and friends stretched out in deck chairs browning nicely.

Ah! This is the life.



Length 27ft., Beam 6ft. 10ins.,
Weight approx 37cwt., Headroom 5ft. 10ins.
Fitted out as Dawncraft 22.



For the Connoisseur

The DAWNCRAFT 27

(Centre Cockpit)

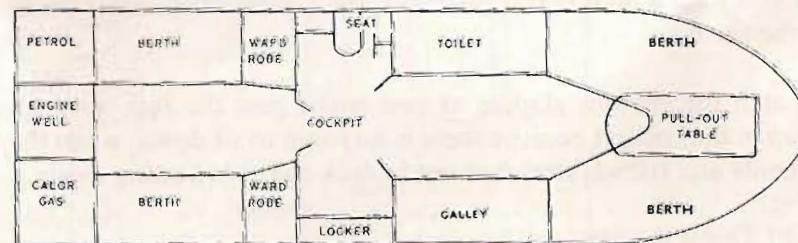
Every skipper sooner or later longs for the sheer professional elan of the centre cockpit cruiser. To be in command amidships with finger tip control of the wheel, hand on throttle and the engine, way behind, responding instantly to your touch, this is the life ! With half an eye on the skippers you glide the bows into a lock with a pilot's precision and come alongside with consummate ease. Say no more ! Centre cockpit skippers are a superior breed of men and the DAWNCRAFT 27 confers membership of this exclusive club.

And the layout of this craft leaves nothing to be desired, where the two cabins would really be called "YOURS" and "THEIRS". In "YOURS", you have two luxurious single berths upholstered with 4 inch foam mattresses, the galley has a full size cooker and a sink with a drainer. There is also a completely separate toilet. In "THEIRS" the children can be washed down and stowed away each night, to be taken out each morning all bright eyed and lovely after a sound nights sleep in their own cabin. Here they can rest undisturbed even when dad comes in late at night having been to the nearest pub — purely to find out the best route of course. And the two wardrobes in "THEIR" cabin will just about take care of all the clothes you could possibly want for a two week cruise.

Yes we think this is the boat for the family man.



Fitted out as the Drawncraft 22
Length 27ft., Beam 6ft. 10ins.,
Weight 38 cwt., Headroom 5ft. 10ins.,
Draft 14ins.



Vanguard

The DAWNCRAFT 30

(Centre Cockpit)

What can be said about this boat which can't be seen at a glance. She's sleek, roomy and sturdy. For the discerning owner this craft is a must. Just note the spacious forward cabin with its two single berths in the bows. The dinette here on the port side, and the complete galley here to starboard with its large sink and cooker capable of catering for a very hungry captain and his crew.

The aft cabin is the ideal place for stowing the children in the evening, with its two snug single berths to lull them to sleep ready for the next day's cruise and the two wardrobes will take all the clothes that you will need on that cruise. The stowage space under the berths allows room for that luggage that can be such a problem on a less better fitted boat, where one spends all the day moving it from one place to the other.

The whole boat has fitted carpets throughout, as do the whole of the DAWNCRAFT range, to give that added touch of comfort.

Need we say more ?

On all DAWNCRAFT Cruisers the owner has the choice of colours for the exterior of the craft, choice of carpets, mattresses and curtains. We would also like to mention that to the best of our information and belief, all measurements and descriptions are correct at the date of publication, but we regret that they cannot form the basis for any contract.



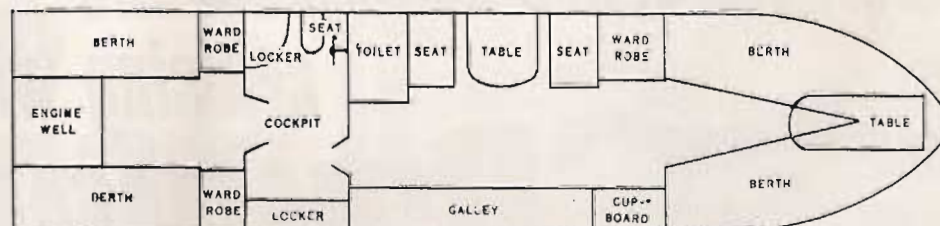
Fitted out as follows:

Mattresses and curtains. Lights. Sink and Water Pump. Full size cooker. Toilet. Marley door. Carpets throughout. Flying bridge and cockpit cover. Spotlight. Helmsman's seat.

Length 30ft., Beam 6ft. 10ins., Headroom 5ft. 10ins. throughout.

Choice of alternative layout.

The layout of this craft can be altered to suit the client's own requirements. It can also be supplied as a shell for the owner to fit out himself.



www.jonesboatyard.co.uk

*enjoy the fabulous outdoor life
cruising with ...*

 ***Dawncraft***