

ELYSIAN 27

4 Berth Cruiser/Centre Cockpit Model



The centre cockpit version of the Elysian 27 is an alternative to the highly successful aft cockpit model, the raised centre cockpit giving excellent all round viewing.

It is available with single or twin, petrol or diesel, inboard or inboard/outboard engine installations. As a guide, a popular twin screw installation comprising twin Perkins 4/107 direct drive diesel engines developing 48 B.H.P. each at 4,000 r.p.m. with a fuel consumption of $1\frac{1}{2}$ gallons (7.5 litres) per hour gives a speed of about 15 knots. Alternatively with an 1,100 c.c. Newage/BMC Vedette petrol engine, speeds of 5-6 knots could be expected.

The spacious saloon is at the aft end with the galley at its forward end. It is light and airy with a table and two settees, and ample storage space. At night the saloon converts to a comfortable two berth cabin. The galley includes a stainless steel sink and drainer and is surrounded by a heat resistant material which forms an easily cleaned working surface, gas oven with boiling rings and grill, cutlery drawer and storage for kitchen utensils.

Forward of the cockpit is a double berth cabin provided with two 6 ft. 3 in. berths, a dresser and washbasin. In a lobby between this cabin and the cockpit are provided a toilet compartment and a spacious hanging locker.

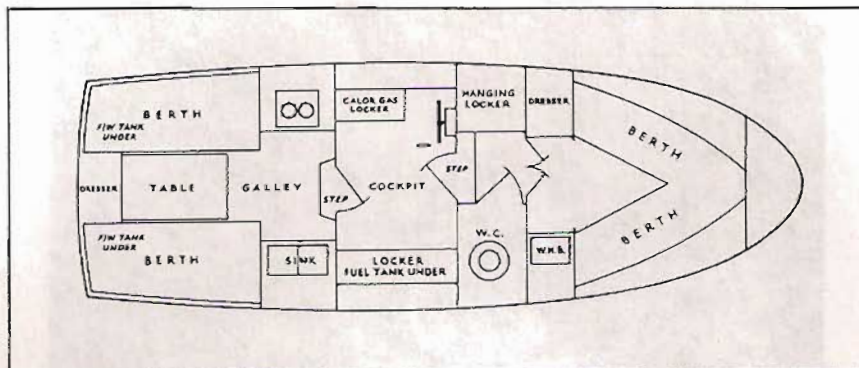
The interior is lined throughout the boat with a smooth surface for easy cleaning, the panelling harmonizing with the upholstery. Large windows (with removable sections for use in hot weather) ensure maximum light with controlled ventilation and provide an excellent view.

The control position is on the port side of the cockpit, a console being equipped with engine control instruments and a steering wheel operating the rudder through a positive and light Teleflex system.

The machinery is readily accessible through the removable cockpit floor sections, and a calor gas locker is fitted under the helmsman's seat.

APPLEYARD, LINCOLN & CO (Boatbuilders) LTD
Riverside Boatyard, Ely, Cambs, England/Telephone Ely 2244 - STD Code OEL6

Standard Layout



Standard Specification

Length overall 27 ft. 0 in. (8.2 m.)

Beam 9 ft. 6 in. (2.9 m.)

Draft 1 ft. 10 in. (0.56 m.)

Overall height from normal waterline with windscreen folded 6 ft. 0 in.

Opening windows in all cabins; Carpet or Vinyl floor covering; Vinyl covered polyfoam cushions; Complete interior electric lighting; Stainless steel sink and drainer; Cooker with grill and oven; Wash basin in forward cabin; Towel rail toilet fittings and mirror; Chemical toilet; Signal mast; Navigation and cockpit lights; Alloy handrails on cabin top; Electric horn and all deck fittings chromium plated; Mooring ropes (2); Fenders (4); 25 gallon fuel tank (each engine); 25 gallon fresh water tank; Fresh water pumps—hand operated; 12 volt battery; Gas installation to safety regulations; Cockpit canopy.

www.jonesboatbuilders.co.uk