

Elysian 27

Aft Cockpit 4 berth Cruiser



Some hundreds of Elysian 27's are now in service and have proved their ruggedness and reliability in performing a wide range of duties. Whether it is high speed operation in open waters or in the no less exacting service in Inland Waterways the Elysian happily fills the bill.

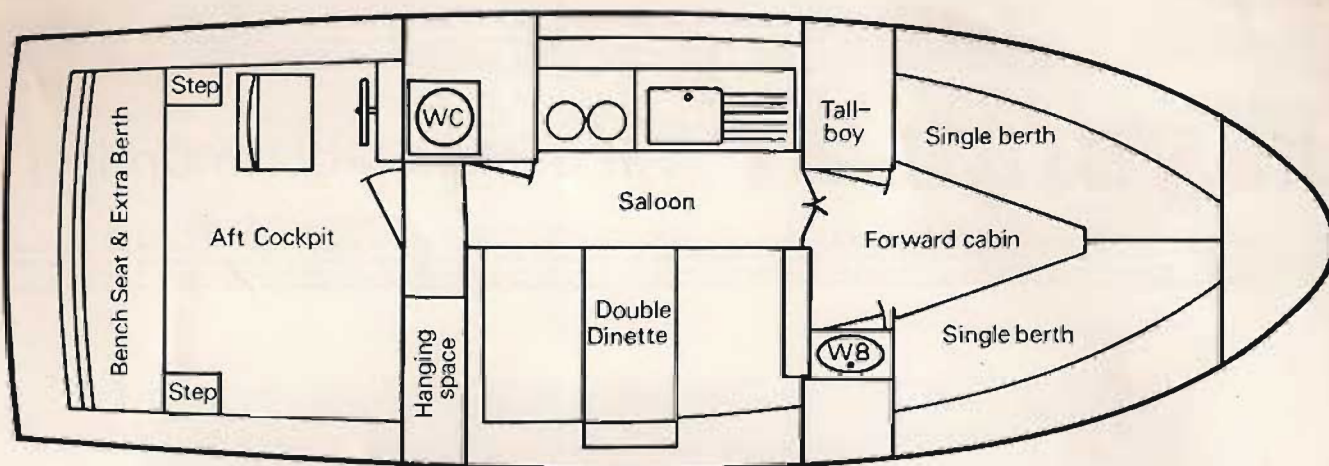
We produce our own GRP mouldings comprising; Hull, Superstructure, Forward Cabin, Galley, Dinette and complete Aft Cockpit which keeps the maintenance to the absolute minimum. The choice of propelling machinery is yours; single or twin screw, petrol or diesel, with single lever control and cable operated steering. Simple and safe to operate.

Saloon Dinette, with lockers under the seats, turns into a double bed. Galley with stainless steel sink unit with hot and cold water. Gas cooker, storage and work top.

Forward Cabin Separated by a bulkhead, or open plan to your choice, with two single berths. Locker and wash basin with hot and cold water.

Toilet compartment Of adequate size with plinth to take either a chemical or sea-type toilet. An enlarged compartment with shower can be supplied at extra cost.

Aft Cockpit Seat across the transom can be used as an extra berth. Storage under seat. Nylon Cockpit Canopy with stays.



Specification

Length overall: 27'0" 8.2 m
 Beam: 9'6" 2.9 m
 Draft: Up to 2'2" 0.67 m
 Average Headroom 6'0" 1.92 m

Hull Semi-deep V hard chine construction in GRP. Moulded-in floor and engine bearers. Gunwale rubber in GRP.

Superstructure GRP with $\frac{1}{2}$ " balsa core in roof and decks for strength and reduced condensation.

Interior Mouldings Forward Cabin, Galley, Dinette. Complete Aft Cockpit with seat and Helmsman's position.

A Lloyd's Certificate can be provided at extra cost.

Engine Petrol or diesel, single or twin screw, hydraulic gearbox, stainless steel shaft, Bronze propeller and rudder.

Fuel tank Approximately 35 gallons (155 litres).

Electrics 12 volt heavy-duty, alternator-charged, battery. Fluorescent lights.

Instrumentation According to engine supplied.

Water system Pressurised hot and cold water heated from a calorifier connected to the engine. Water tank capacity approximately 35 gallons (155 litres).

Toilet Plinth supplied to suit customers' requirements.

Deck fittings Bow and Transom T cleats. Fender Eyelets. Water and diesel filler. Aluminium handrails on superstructure.

Windows Toughened glass in double channel Anodised aluminium frames with hoppers.

Windscreen Toughened Glass. Folding.

Roof linings Vinyl throughout.

Floors Cushioned vinyl or carpet.

Gas supply Bottles contained in a Crystic Fireguard GRP locker in Aft Cockpit seat.

Steering Morse/Teleflex cable, head and wheel.

Engine control Morse single lever.

Boats are normally built to our standard layout and colours but your requirements can be catered for at the initial design stage.

Centre Cockpit Elysian 27 and Buccaneer 4 to 10 berth Cruisers also available.



**BOUNTY
BOATS LIMITED**

Riverside Estate.
 Brundall,
 Norwich, NR13 5PW

Telephone: Norwich (0603) 712070

