



JOHN FREEMAN (MARINE) LTD.

The NEW 'FREEMAN 22'

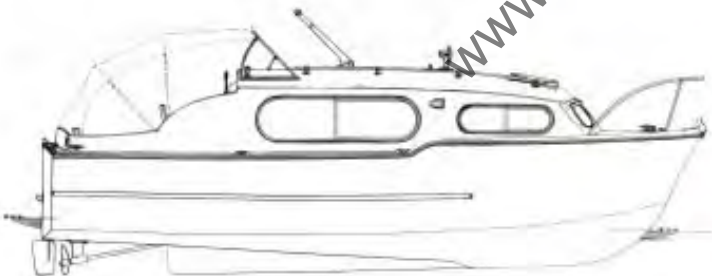
A luxurious 22' cabin cruiser moulded in glass fibre to a choice of colours, with an insulated superstructure. Inboard petrol engine, a double berth and two single berths. Good headroom throughout, very comprehensively equipped, and can be carried to your favourite waters on a specially designed trailer.



Go aboard a 'FREEMAN 22' ...

see the CAREFULLY PLANNED INTERIOR
GROUPED CONTROLS · SNUG ENGINE COMPARTMENT
SENSIBLE COCKPIT HOOD and many other refinements

You will quickly realise there could be no finer
INVESTMENT for your **CRUISING PLEASURE**



Richly Panelled Cabins

Colourful folkweaves

Beautifully made cabinet work with

China Lockers, Wardrobe, Cocktail Cabinet

A double berth and two single berths

Well placed Galley

Flush Toilet

Foam Mattresses

and

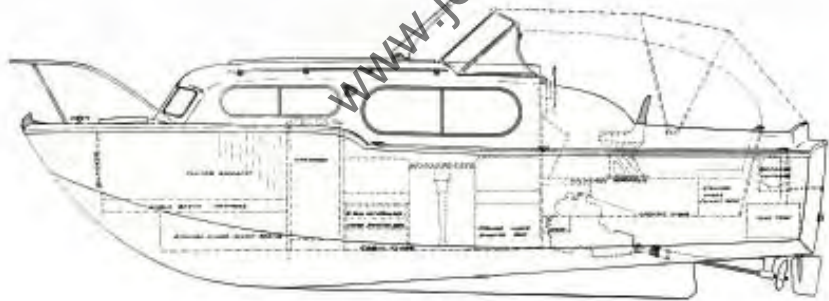


EVERY COMFORT FOR FOUR

A choice of colours for hull and superstructure and a wide range of upholstery fabrics

The 'FREEMAN 26'

Here is a graceful family cruiser of robust construction, moulded in glass fibre in a choice of colours and with fully insulated superstructure. The 'Freeman 26' is available with single or twin petrol or diesel engines.



**A GOOD CHOICE
OF COLOURS FOR
HULL AND
SUPERSTRUCTURE**

**Lavish Four Berth
Accommodation**

CAREFULLY SELECTED
VENEERS

WITH

LUSTROUS FINISH

Fitted Carpet to choice of
colours

Wide range of upholstery
fabrics



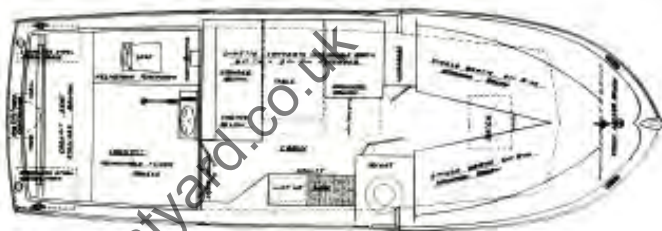
The spacious comfort of the finely finished interior is a sheer delight

Note these comprehensive specifications

'FREEMAN 22'

PRINCIPAL DIMENSIONS

LENGTH OVERALL	22' 0"
BEAM	7' 6"
DRAFT (Aft)	2' 0"
HEADROOM (Cabin)	5' 10"
CRUISING SPEED	8-9 knots
WEIGHT	26 cwt.



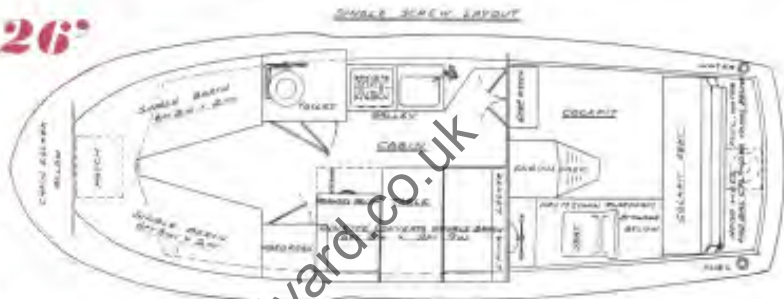
ENGINE	Ford 105E Watermate with 2.1 reduction gear, flexibly mounted.
HULL	Glass fibre laminate.
SUPERSTRUCTURE	Glass fibre laminate with rigid foam interlayer.
FUEL CAPACITY	15 Gallons. Stainless steel tank of welded construction.
WATER CAPACITY	15 Gallons. Stainless steel tank of welded construction.
OPENING WINDOWS	Are made from carefully designed sections and glazed with toughened safety glass.
FIXED LIGHTS	3 "Perspex" fitted in special rubber sections.
DECK FITTINGS	Chromium plated brass or gunmetal.
STANDARD EQUIPMENT	Cockpit hood and slidescreens, windscreen, helmsman's seat, searchlight, cockpit seat, navigation lights P & S, mast light, flush toilet, foam mattresses, fitted carpet, water pump, sink, gas grill, cabin lighting, mooring cleats, fairleads, bow roller, chain pipe, 12 volt battery, curtains, hatch, stainless steel bow rail.
EXTRAS	Shown on separate price list.

These fine craft are built for your pleasure by

FREEMAN 26'

PRINCIPAL DIMENSIONS

LENGTH OVERALL	25' 10"
BEAM	8' 10"
DRAFT (Aft)	2' 6"
HEADROOM (Cabin)	6' 0"
CRUISING SPEED	8-9 knots



ENGINE	Persons Sea Urchin patrol engine, flexible mounted, with 2.1 reduction gear and single lever control.
HULL	Glass fibre laminate of immense strength moulded in one piece.
SUPERSTRUCTURE	Glass fibre laminate, one piece moulding, with one inch foam interlayer.
WINDOWS	Are made from specially designed brass section, chromium plated and glazed with toughened safety glass.
FITTINGS	All best quality chromium plated.
STANDARD EQUIPMENT	Cockpit hood and sidesteps, navigation lights, mast light, cabin lights, 12 volt battery, cockpit seat, flush toilet, helmsman's seat, pump, gas cooker, foam mattresses, curtains, hatch, chain pipe, cleats and fairleads, sternhead fitting, combined gear and throttle controls, stainless steel bow rail.
FUEL CAPACITY	15 Gallons, stainless steel tank of welded construction.
WATER CAPACITY	15 Gallons, stainless steel tank of welded construction.
EXTRAS	Shown on separate price list.

JOHN FREEMAN (MARINE) LIMITED
WOLVEY • NR. HINCKLEY • LEICESTERSHIRE

FREEMAN CRUISERS

*are delivered and launched anywhere ready for you to
drive away to*

HAPPY DAYS AFLOAT



www.jonesboatyard.co.uk

TRAILER

The 'Freeman 22' can be carried on a specially designed trailer for high speed towing behind a private car. Launching and re-loading can be easily effected from suitable beaches.

This is fitted with Keel Roller, Hand Winch, Ball Coupling, Brakes, Telescopic Jockey Wheel, 6.50 x 16 Truck Type Tyres, Chrome Caps, Mudguards.