

Freeman Cruisers



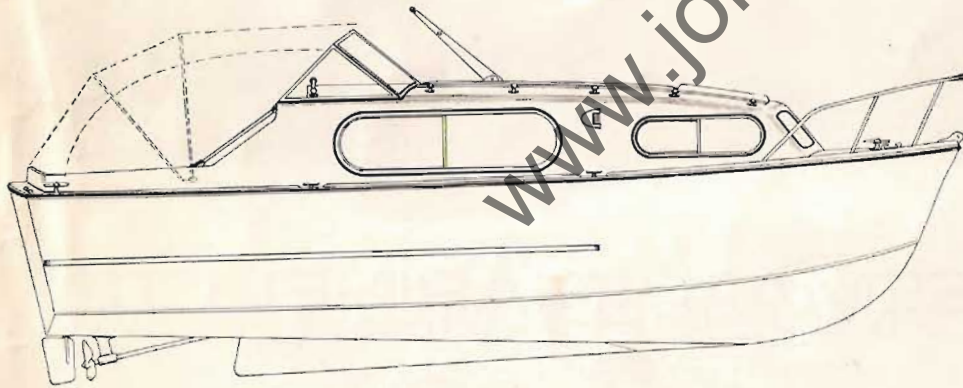
JOHN FREEMAN (MARINE) LTD.

The **'FREEMAN 23'**

A luxurious cabin cruiser
moulded in glass fibre
with an insulated superstructure. Inboard
petrol engine, a double berth and
two single berths. Good headroom
throughout, very comprehensively equipped,
and can be carried to your favourite waters
on a specially designed trailer.



STANDARD MODEL



HARDTOP VERSION

FREEMAN 23'

The forward cabin has two single berths with storage space beneath them and a locker above in the bows. In the main saloon area there is a hanging wardrobe from which the door pulls out into a full partition completely closing off the main saloon from the forward cabin, a toilet compartment, a comfortable dinette which makes up into a double berth, or if table is not required, it can be completely folded away, china lockers and cocktail cabinet, a well placed galley containing twin burners and grill, sink unit and pump and plenty of stowage space.

The 23' has a single petrol engine. A single diesel with single lever control is available as an optional extra.



A wide range of upholstery and carpet fabrics to suit your personal taste



'FREEMAN 28'

A versatile cruiser for inland waterways or coastal cruising, single petrol engine is standard but an option of twin petrol, single diesel or twin diesel is available. The 'Freeman 28' is moulded in glass reinforced plastic with a fully insulated superstructure and is available with either a softtop or hardtop version.





A glimpse into the interior of the 'Freeman 28'

A well appointed cabin accommodating four persons. The forward cabin has two single berths with stowage below and overhead shelves above with escape hatch under the foredeck, spacious hanging wardrobe and a folding partition separating the forward cabin from the main saloon.

The main saloon is comprised of a luxurious toilet compartment, incorporating a w.c., hot and cold shower, a vanity unit and washbasin with hot and cold water.

The galley has a full oven and grill, sink with pressurized hot and cold water, draining board with stowage for plates and cups behind. The cupboards underneath

this unit provide ample stowage space.

The dinette converts into a double berth and has a chest of drawers and stowage for bedding underneath.

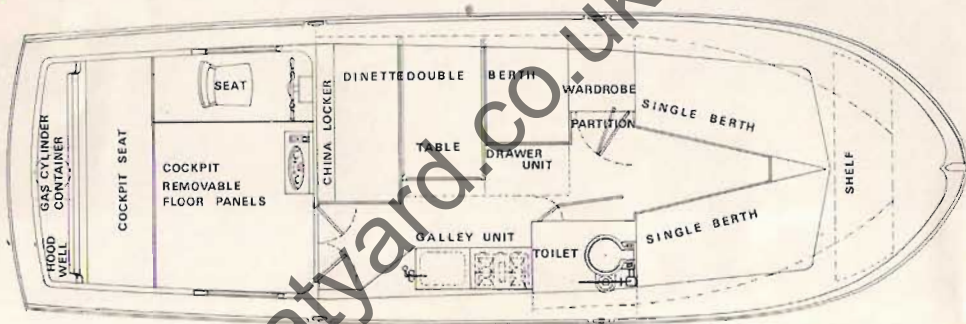
Other features in the main saloon include a hanging wardrobe and a cocktail locker. Both the main saloon and forward cabin are completely lined with leather cloth.

Note these comprehensive specifications

'FREEMAN 23'

PRINCIPAL DIMENSIONS

LENGTH OVERALL	23' 3"	7.08
BEAM	7' 6"	2.28
DRAFT (Aft)	2' 0"	
HEADROOM (Cabin)	5' 11"	
CRUISING SPEED	8 - 9 knots	
WEIGHT	30 cwts.	
HEIGHT ABOVE WATERLINE	6' 10"	



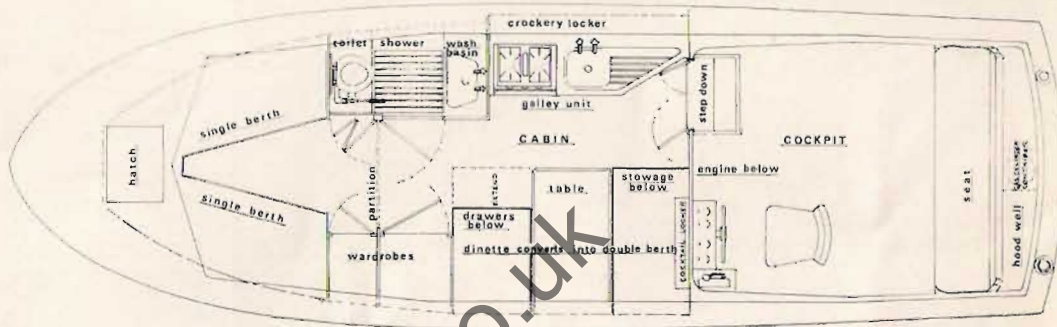
ENGINE	Ford 2261E Watermota petrol engine with alternator and 2.1 reduction gear, flexibly mounted.
HULL	Glass fibre laminate.
SUPERSTRUCTURE	Glass fibre laminate with rigid foam interlayer.
FUEL CAPACITY	15 Gallons. Stainless steel tank of welded construction.
WATER CAPACITY	15 Gallons. Stainless steel tank of welded construction.
OPENING WINDOWS	Are made from carefully designed sections and glazed with toughened safety glass.
FIXED LIGHTS	$\frac{3}{16}$ " 'Perspex' fitted in special rubber sections.
DECK FITTINGS	Chromium plated brass or gunmetal.
STANDARD EQUIPMENT	Cockpit hood and sidescreens, windscreen, helmsman's seat, cockpit seat, navigation lights P & S mast light, 5" foam mattresses, fitted carpet, water pump, sink, gas griller, cabin lighting, mooring cleats, fairleads, bow roller, chain pipe, 12 volt battery, curtains, hatch, stainless steel bow rail, anti slip deck.
EXTRAS	Shown on separate price list.

These fine craft are built for your pleasure

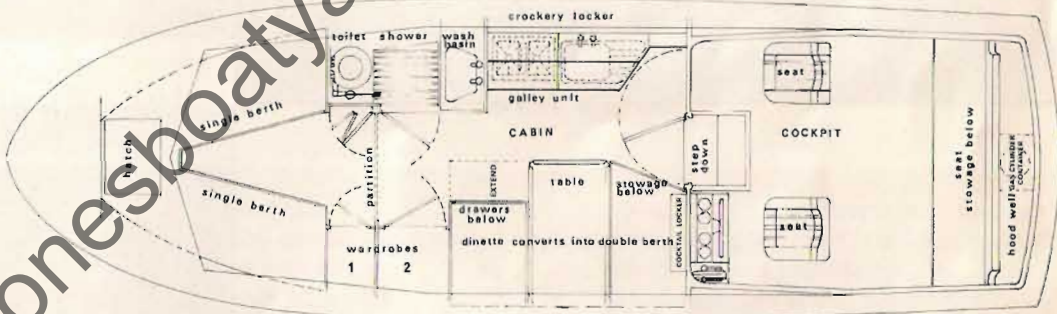
by **JOHN FREEMAN (MARINE) LTD.**

FREEMAN 28'

SINGLE SCREW LAYOUT



TWIN SCREW LAYOUT



PRINCIPAL DIMENSIONS

LENGTH OVERALL	28' 0"
BEAM	9' 0"
DRAFT (Aft)	2' 3"
HEADROOM (Cabin)	6' 1"
CRUISING SPEED	8 - 9 knots
HEIGHT ABOVE WATERLINE	8' 0"
WATERLINE LENGTH	25'

ENGINE
HULL
SUPERSTRUCTURE
WINDOWS
FITTINGS
STANDARD EQUIPMENT

Ford 2264E petrol engine with Alternator, flexibly mounted, with 2.1 reduction gear and single lever control.
Glass fibre laminate of immense strength moulded in one piece.
Glass fibre laminate, one piece moulding, with one inch foam interlayer.
Are made from specially designed aluminium section, heavily anodized and glazed with toughened safety glass.
All best quality chromium plated.
Cockpit hood and sidescreens, navigation lights, mast light, cabin lights, 12 volt battery, cockpit seat, helmsman's seat, sink with pump, gas cooker, 5" foam mattresses, curtains, hatch, chain pipe, cleats and fair-
leads, stemhead fitting, combined gear and throttle controls, stainless steel bow rail, anti slip deck. Pressurised
H&C water laid on to the galley, shower and vanity unit.
25 Gallons, stainless steel tank of welded construction.
25 Gallons, stainless steel tank of welded construction.
Shown on separate price list.

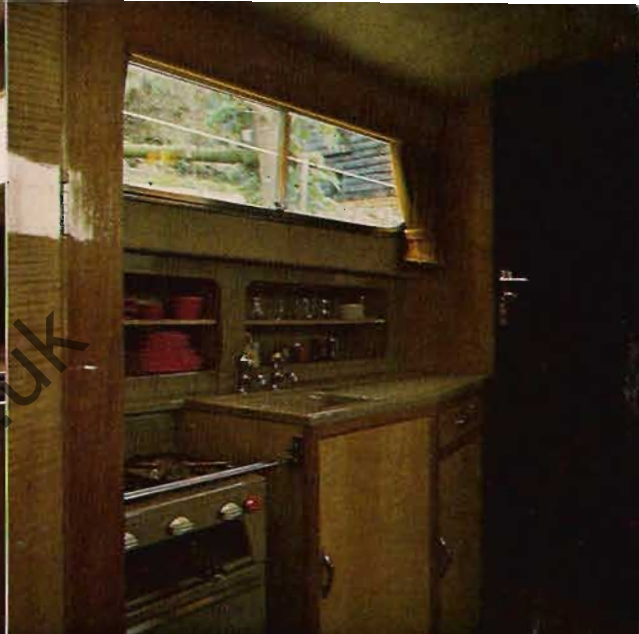
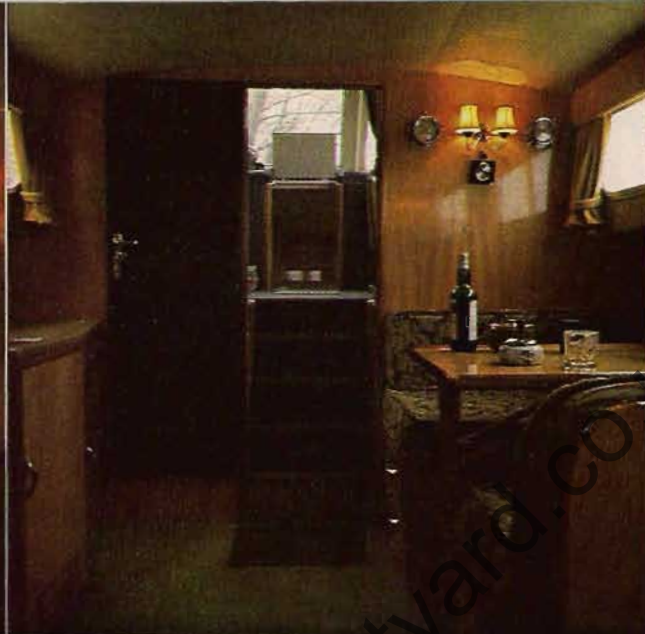
FUEL CAPACITY
WATER CAPACITY
EXTRAS

'FREEMAN 32'

A powerful twin screw diesel cruiser moulded in G.R.P. with accommodation for six people in three luxurious cabins, and enclosed wheelhouse.

The 'Freeman 32' is equally at home on quiet inland waters when the powerful engines can become quite docile for navigating into secluded moorings.





A glimpse into the interior of the 'Freeman 32'

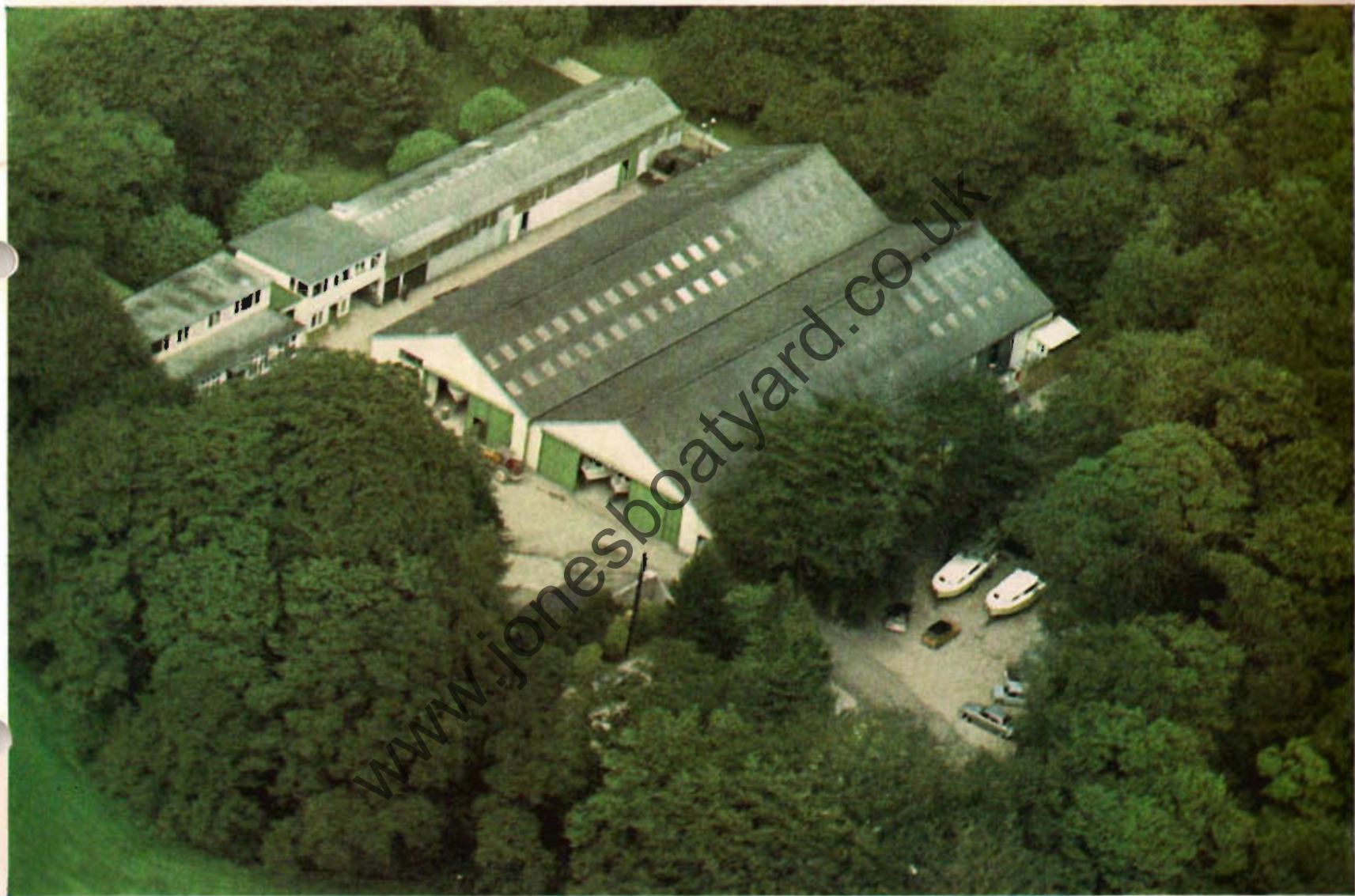
Luxurious cruising accommodation for six persons. The forward cabin has two single berths with ample stowage beneath and useful shelves above. Neatly folding doors give complete separation from the main saloon.

Spacious main saloon comprising a settee which converts effortlessly into a double berth, with drawers beneath. An open plan galley giving easy access to a colour tone moulded sink and draining

board equipped with hot and cold pressurized water. Matching cooker with oven, grill and two burners with fiddle rail. Plenty of stowage space, in fact all available space has been utilized to give maximum convenience. The spacious aft cabin with full head room is the essence of luxury accommodating two single berths, vanity unit with hot and cold pressurized water and chest of drawers beneath, toilet compartment and hanging wardrobe.

All roofs are triple skinned incorporating an insulating layer of 1" rigid foam and all ceilings are lined in leathercloth. The wheelhouse is fully enclosed with two sliding doors and access to the aft deck. Fitted with adjustable helmsman seat. Carpeted floor and leathercloth side panels, black to waistline and beige above. A wide range of upholstery fabrics and carpets are available for your selection.

All interior woodwork is finished to a very high standard

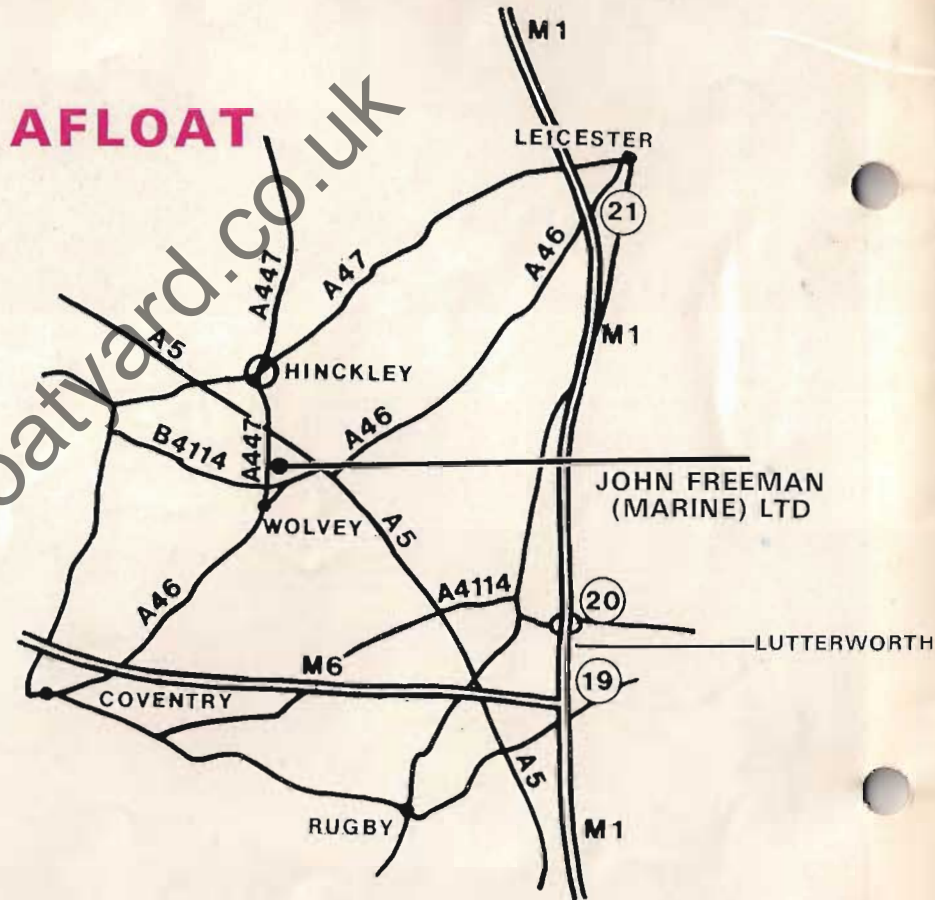


The home of Freeman Cruisers where we always welcome visitors.

FREEMAN CRUISERS

can be delivered and launched anywhere ready for you
to drive away to

HAPPY DAYS AFLOAT



JOHN FREEMAN (MARINE) LTD.

WOLVEY, NEAR HINCKLEY, LEICESTERSHIRE, ENGLAND WOLVEY 202-203 661-662