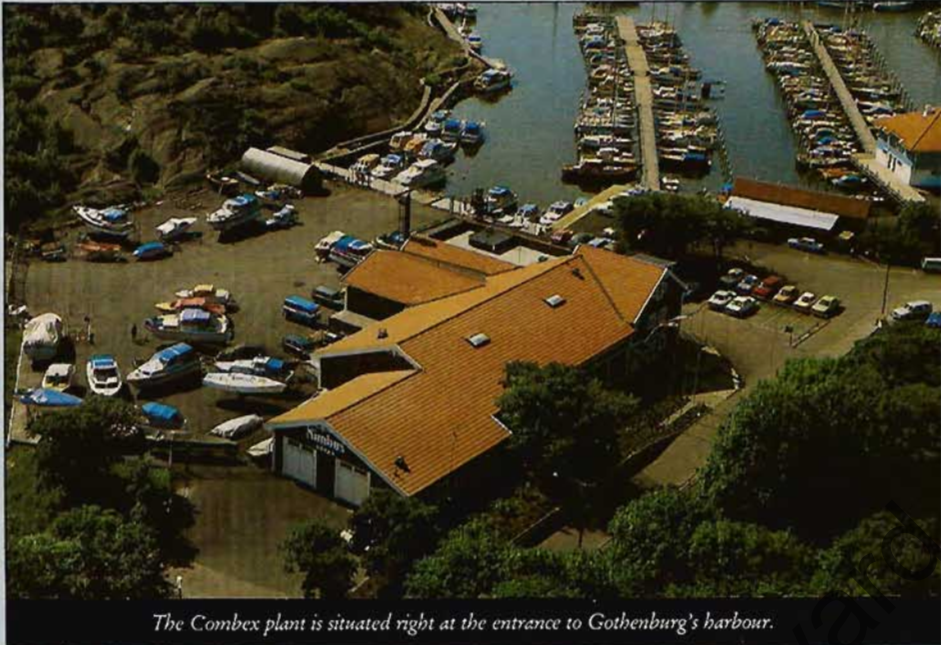




NIMBUS 3000 TURBO



THE DISCERNING —THE NIMBUS



The Combex plant is situated right at the entrance to Gothenburg's harbour.

If you want a motorboat that gives a gentle and comfortable ride at both low and very fast speeds. With a standard of comfort and interior fittings that is second to none. And with equipment and room enough for four to five people to enjoy a pleasant stay aboard. Then the Nimbus 3000 Turbo is the boat for you.

UNRIVALLED SPEED AND SEAWORTHINESS

The Nimbus 3000 Turbo is a fast boat. With a standard diesel it reaches 22 knots, no less than approx. 32 with a twin installation. And throughout its entire speed range it moves gently and comfortably without any planing threshold. This is thanks to its completely unique bottom design which ensures the same trimming position at all speed.

The Nimbus 3000 Turbo is a large boat. Yet it is still easy to manoeuvre.

EXCLUSIVE COMFORT

You will really enjoy life aboard the Nimbus 3000 Turbo. The handsome decor is tastefully and elegantly done and can be seen in such features as the teak woodwork, beautiful textiles (upholstery), comfortable carpets, subtle fittings etc. The overall planning of this boat is also to be included as part of its comfort. A deck with wide covering boards, three anchor lockers, spacious outside area, cockpit with comfortable seats, well-equipped galley and canopy/soft top. Other refinements for greater well-being and comfort include a fresh-water-shower on the transom, self-bailing cockpit, canopy with full headroom, 400-liter fuel tank and much more.

As you will notice the Nimbus 3000 Turbo has been built and equipped throughout to ensure the highest standards of comfort.

QUIET AND DRY

The hull and decks of the Nimbus 3000 Turbo are built as a sandwich construction with Divinycell as the core material. This ensures superior thermal insulation and soundproofing as well as keeping the interior of the boat completely free of condensation.

BOTTOM CONSTRUCTION

Unique bottom solution ensures that the boat completely lacks a planing threshold and has the same trimming position at all speeds.

CONSTRUCTION

In hand laid-up glassfibre/reinforced plastic. Hull and decks built as a sandwich construction with Divinycell as the core material. Teak fittings. Windscreens of safety glass with aluminium frames. Self-bailing cockpit.

GALLEY

Twin-burner gas cooker with oven, gas bottle, stainless steel sink, tap for pumped water, storage drawers, cupboard, waste bucket, and stowage area.

TOILET AND WASHING FACILITIES

W.S., pull-out washbasin with tap for pumped water, storage cabinet, mirror, clothing hooks, etc.

CABINS

Fore cabin 2+1 berths. Captain's cabin, double berth. All berths are full-length.

TEXTILES

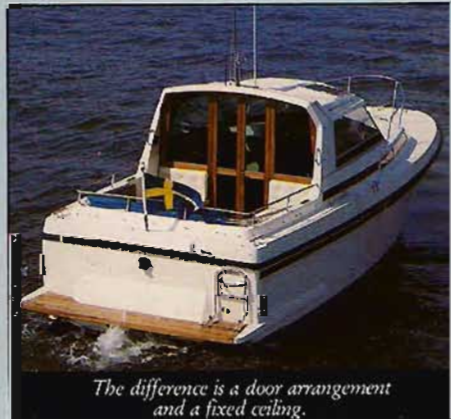
Ceiling and hull linings in laminated fire-proofed velour. Fitted carpet in fore cabin. Cockpit cushions in an easy-care synthetic material. The cushions are covered in high-class textiles.

STOWAGE AREAS

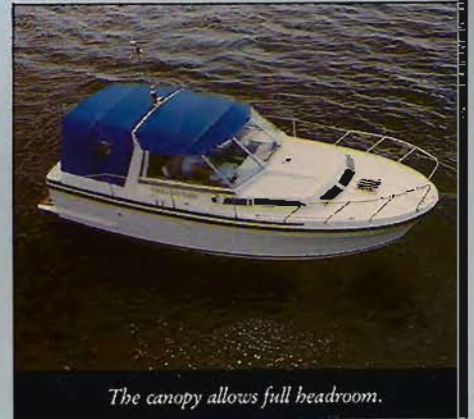
Wardrobe and stowage area in the fore cabin. Wardrobe astern. Stowage area in stern set of shelves. Approximately 1 m³ stowage area between driver and passenger seat. Stowage area below passenger seat. Stowage area below berths. Chart compartment.



Nimbus 3000 Turbo, special version.



The difference is a door arrangement and a fixed ceiling.



The canopy allows full headroom.

SAILOR'S DREAM 3000 TURBO.

COMPLETELY SAFE

The Nimbus 3000 Turbo is a completely safe boat. This means that the builder's premises, production processes, materials, equipment, engine installation, fuel system, ventilation, bailing and sanitation systems electrical installations and everything else in the boat comply with the most stringent safety regulations. Nothing has been left to chance.

This is for your sake - when at sea you should be able to rely on your boat 100%. And with the Nimbus 3000 Turbo you can do just that.

ELECTRICAL INSTALLATIONS

12 V electrical system with two separate circuits, alternator and twin diode. Eight lighting points plus navigation lighting at the wheel.

Extra electrical socket.

Windscreen wipers.

Internationally approved lanterns.

Signal horn.

Two 75 A marine batteries. A further two batteries are included when a refrigerator and heating are installed.

STANDARD EQUIPMENT

150-litre fresh-water tank.

400-litre fuel tank with electrical tank gauge.

Teknoflex steering.

Teknoflex single-hand controls.

Wheel with outer ring.

Stainless steel jack staff with pennant fitting and signal horn.

Teak flagstaff.

Pulpit.

Four belaying cleats.

Two spring cleats.

Anchor locker at fore plus one on each side of the cockpit.

Canopy with full headroom.

Table in cockpit.

Table in fore cabin.

Fire extinguisher.

Bilge pump.

Shower on transom.

Skylight on fore deck.

Standard equipment may vary. The right to introduce modifications is reserved.

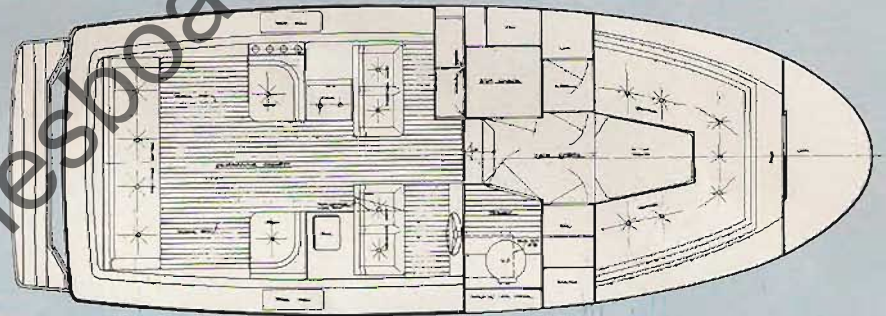
There is a special version of the Nimbus 3000 Turbo. The difference is a door arrangement between the cockpit and steering area as well as a fixed ceiling with two skylights.

TECHNICAL DATA

Overall length	9,00 m, 29,53 ft.
Beam	3,20 m, 10,5 ft.
Weight	3.200 kg with 1 A.Q.D 40 engine, 7.048 lbs.
Height above waterline	2,50 m (excluding folding jack staff), 8,20 ft.
Draught	0,80 m, 2,60 ft.



Designer: R Eliasson



Engine	Total output	Cruising speed approx.	Top speed approx.
1 x AQ D 40 Diesel	130 hp	20 knots	22 knots
1 x AQ AD 40 Diesel	165 hp	22 knots	24 knots
2 x AQ AD 40 Diesel	330 hp	27 knots	32 knots
2 x AQ AD 30 Diesel	224 hp	25 knots	30 knots
1 x AQ 225/280 Petrol	225 hp	25 knots	30 knots
2 x AQ 145/280 Petrol	290 hp	27 knots	32 knots

Other engine alternatives upon request. Speed is dependant on the load carried by the boat, running-in time etc.

Ask for special tables for each engine alternative.

VOLVO PENTA

