

# NORMAN 24



**4-Berth, Aft Cockpit Cruiser**



# NORMAN



# NORMAN

# 24

## Outboard or inboard 4-Berth Cruiser



Dinette/berths



Galley



Aft cockpit

### Interior Layout:

The NORMAN 24 provides 4 berths with full headroom throughout and the open-plan layout gives the impression of extreme spaciousness. The two forward full length berths convert to a generous double, as does the dinette arrangement on the port side in the main cabin with provision for plenty of storage under. Opposite the dinette arrangement, the galley comes with full stainless steel sink and drainer and pressurised water system, and a full cooker with oven and grill. Generous working surfaces are also provided. Ventilation is superb with the metal framed sliding side windows plus forward hatch and permanent roof vent. A fully enclosed and spacious toilet compartment includes a modern chemical toilet with hanging wardrobe opposite. Fully upholstered headlining is fitted to minimise on condensation and, combined with modern designed fabrics covering all upholstery plus curtains and rich carpeting throughout, gives the cabin a sumptuous homely feeling during the day and night. Three 12 volt lights complete with integral switches are fitted and generous storage space is provided underneath all the berths.

### Exterior:

Moulded-in non-slip decking and stainless steel grab rails with generous side decking makes deck work safe and heavy weight PVC fendering plus side rubbing strakes on the hull provides excellent protection against accidental damage. The well-styled stainless steel pulpit adds to the looks of the craft and deck fittings include a heavy-duty foredeck cleat, two aft deck cleats, two fair leads and four fender eyes. Electric searchlight and 12 volt horn are fitted to the exterior coach roof. Port and starboard navigation lights are also fitted as standard together with a robust metal framed windscreens. Anti-fouling is standard with an attractive boot topping which further enhances the sleek lines of the hull.

### Specification 24

Length	(7.47m) 24'5"
Beam	(2.08m) 6'10"
Draft	(0.558m) 1'10"
Height above water line	(1.85m) 6'00"
Water capacity	20 gallons
Fuel (VOLVO Diesel)	15 gallons

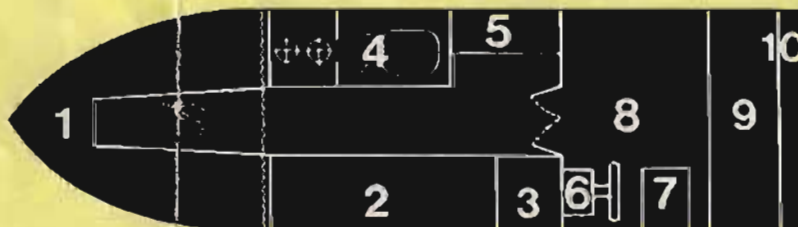


### VOLVO PENTA S DRIVE

Fuel economy aspects have been further enhanced by the marrying together of this new cruiser with the superb VOLVO MD diesel S Drive. This S Drive is housed in a tunnel which gives maximum propeller protection whilst the rudder provides superb slow speed manoeuvrability. This permits the engine to be installed at the stern of the boat and maximises cockpit accommodation as the engine cover then becomes part of the aft seating. This engine really does make a mockery of operating costs with fuel consumption at normal waterways speed less than half a gallon an hour.

### Cockpit:

Maximum space is provided for in the cockpit which is protected by a full canopy with detachable side curtains as standard. This canopy folds away quite easily and neatly in the special hood well at the aft end of the boat. The helmsman is provided with a comfortable upholstered folding seat and the calor gas bottle is stored in a vented compartment under the helm seat foot rest. On the inboard version access to the engine is unrivalled as the whole of the engine cover can be easily removed to facilitate engine servicing and adjustments.



- Key:** (1) forward V berths convert to double  
(2) table/double berth  
(3) toilet compartment  
(4) galley  
(5) wardrobe

- (6) steering console/calor gas locker  
(7) helmseat  
(8) cockpit floor/storage underneath  
(9) seat/engine under  
(10) hood locker.