

Hartford Marina Ltd



A Yule Catto Company



Sancerre 33SL

Hartford Marina Ltd

Sancerre

The Sancerre 33SL is built on the hull and superstructure, designed and moulded by R. Bondon and fitted out by Sancerre Cruisers Ltd—both of South Walsham. It offers excellent sea keeping qualities and a choice of engines are fitted—which will give flexibility for inland and coastal use.

Having a G.R.P. exterior, the owner possesses a craft requiring the absolute minimum of upkeep and maintenance.

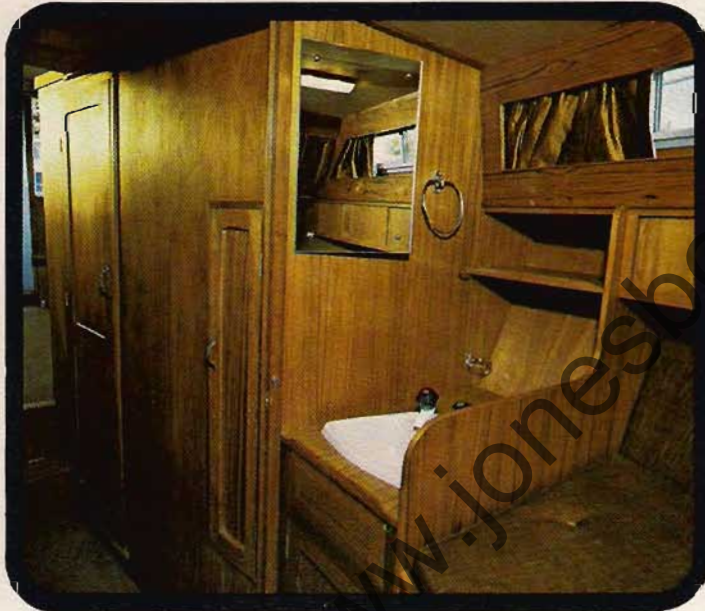
The hull of the Sancerre 33SL is laid up with double gel, followed by one ounce fibreglass matt all over and 12 ounce matt all over. This is then doubled on the chine, keel section, stem, quarters

and transom. One stringer—2" x 1½"—runs around the craft and is covered by a further 6 ounce matt. This lay-up ensures the hull's great strength throughout and, in places is over 1½" thick.

The superstructure is built on similar lines but with four ounce matt, a corrugation of ½" foam on cabin tops and decks, together with a further four ounce matt covering the foam. There is extra reinforcement on the saloon windows and stress points.

The hull and superstructure were designed and constructed with strength in mind, to stand the roughest sea and river conditions.

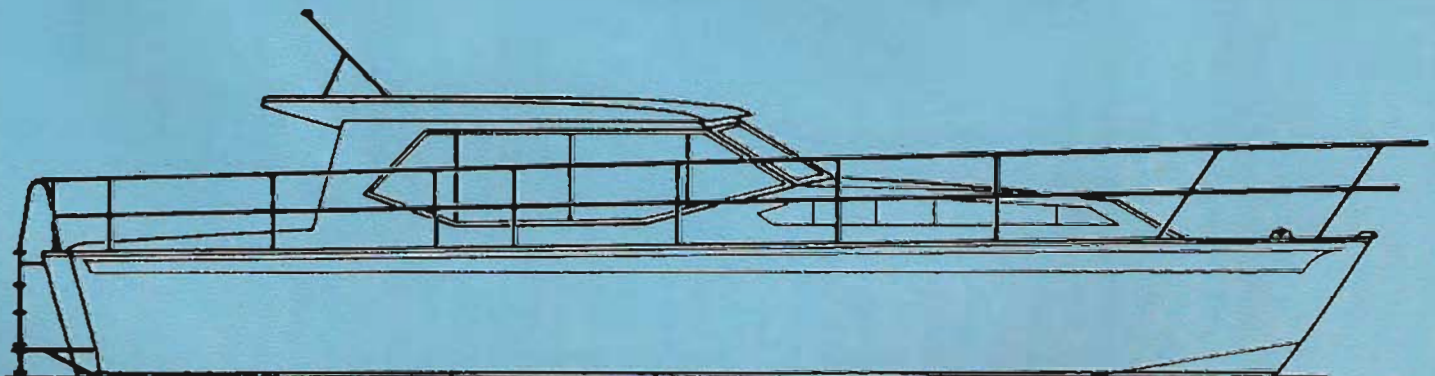
The luxurious Sancerre 33SL is fitted out to a very



Forward cabin looking aft



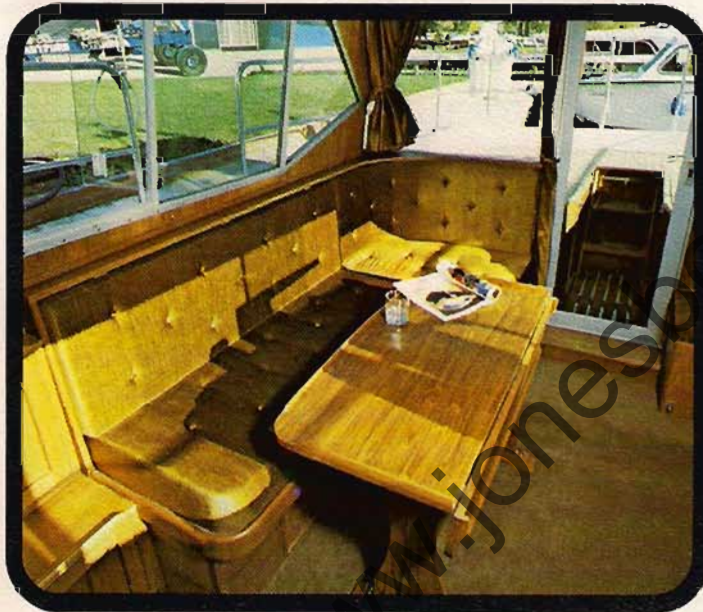
Luxurious toilet and shower



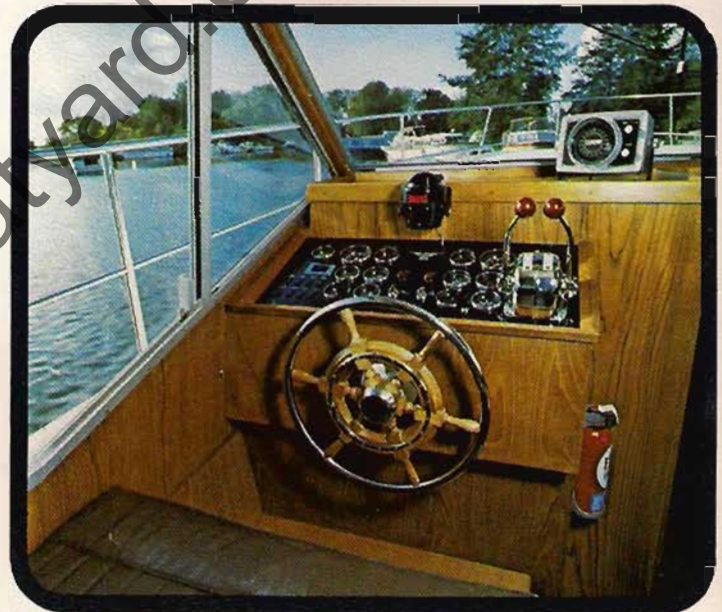
33SL



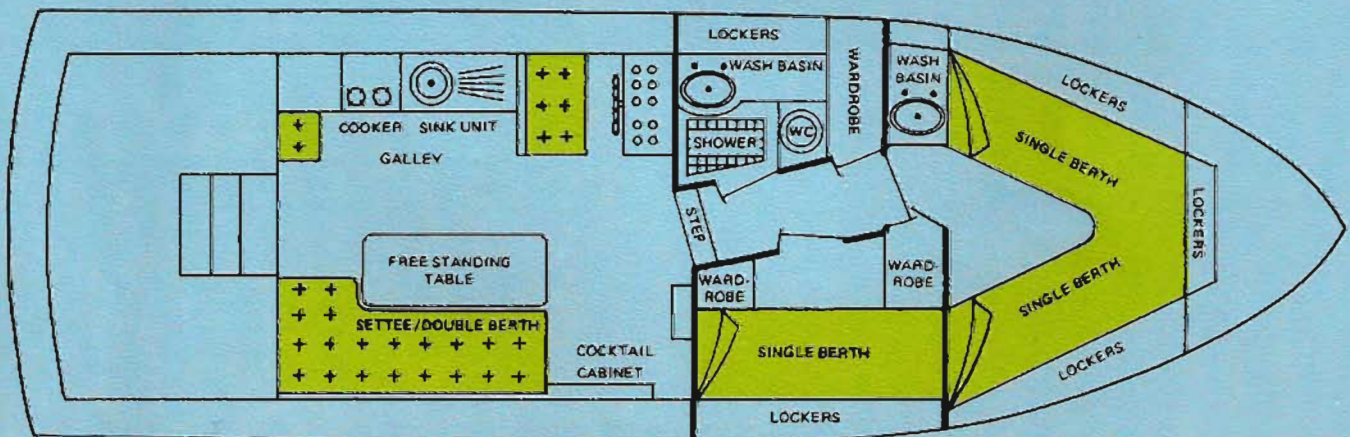
high specification throughout, many so called extras being included as standard equipment. The beautiful teak veneer used on all bulk heads has a super-smooth satin finish and is of the finest quality. Good accommodation, stowage space, the luxury of traditional wood furnishing and the elegance of modern styling is all offered in the Sancerre 33SL, due to its skilful design.

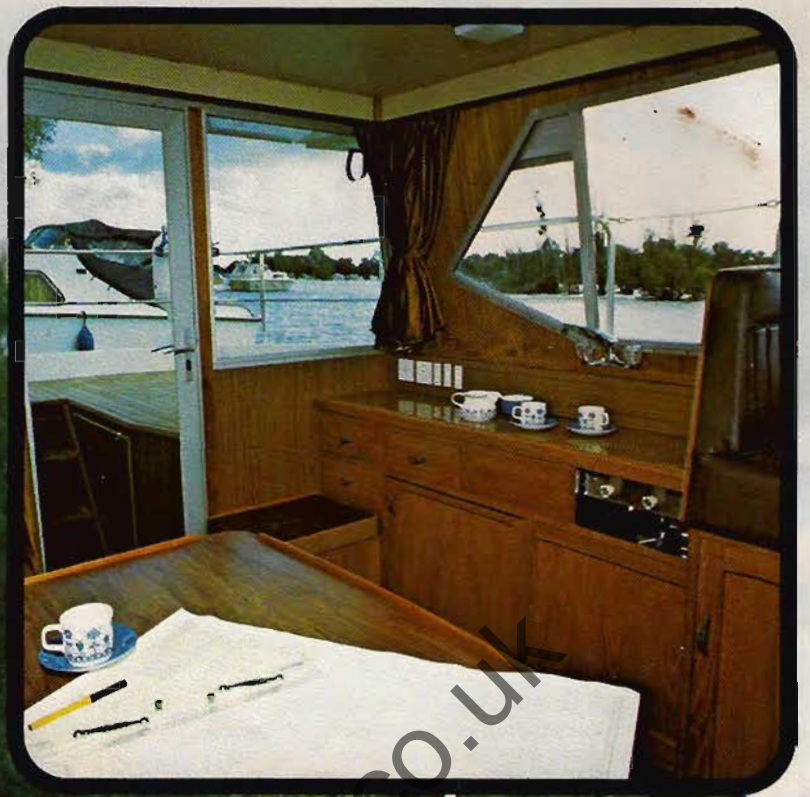


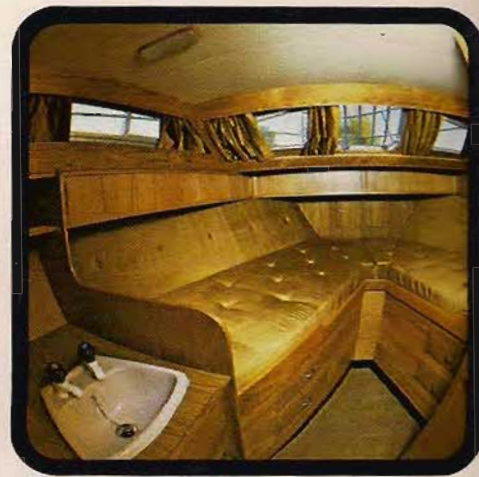
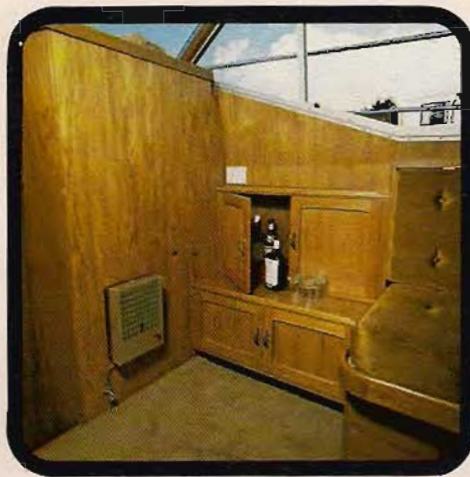
Wheelhouse saloon starboard side



Wheelhouse saloon helm position







General Specifications

Measurements: Length L.O.A.—33' LWL—29' 3"

Beam: 10' 7", Draught 2' 6"

Hull: G.R.P., Hull moulded by R. Bondon, South Walsham.

Superstructure: Self coloured one piece moulding by R. Bondon.

Engines: A choice of Mermaid engines are available. Fitted with contra rotating Borg-Warner 2-1 reduction V Drive gearboxes. Bowman oil coolers are fitted to both engine and gearbox.

Engines are rated from 45 BHP up to 180 BHP and are finished off to show specification with chrome Rocker boxes.

Instruments: One set of instruments per engine, including water temperature, engine oil pressure and gearbox oil pressure gauges, ammeter and tachometer. Dashboard also includes warning lights, hour meters, sumlog and fuel gauge.

Engine Bearers: A mild steel box section is fitted to the craft, this is glassed over and the engines are flexibly mounted on the box section.

Propeller shafts: 1½" stainless steel.

Propellers: Twin Manganese bronze 18" x 26" handed Aqua Poise prop.

"P" Brackets: Manganese bronze.

Rudders: Twin stainless steel.

Steering: Hydraulic steering, fitted under instrument panel with a 19" chromium spoked wheel.

Fuel Tank: Single fuel tank of 150 gallons.

Water Tank: Stainless steel 65 gallon water tank fitted forward.

Engine Room Ventilation: Natural through ventilation.

Windows: Toughened glass windows in anodised aluminium frames, sliding to port and starboard in main saloon. Escape hatch fitted in forward cabin. All glass tinted green.

Engine room: Fully noise insulated and fitted with two automatic fire extinguishers.

Hot Water: Supplied by fully insulated 12 gallon calorifier tank piped to starboard engine.

Lights: Forward cabin two berth lights, starboard side cabin one berth light, saloon three berth lights, one cockpit light and one toilet light. Cockpit light fitted with internal and external switches.

Bilge Pump: Electric, automatic bilge pump fitted with manual over-ride.

Electric System: 12 volt throughout, one 12 volt battery to each engine, with battery isolation switches. All systems fused and labelled on separate fuse board.

Bulk Heads: Selected teak veneers varnished and polished.

Heating: One catalytic heater in main saloon.

Toilet compartment: Vanity unit fitted with chrome taps, shower with mixer tap and teak shower tray, one mirror 24" x 18", flushing toilet. Generous storage space with shelves and drawers. Moonstone lamp and electric shaver plug. Toilet roll holder, glass, toothbrush holder, towel rail.

Starboard side cabin: Single berth with drawers and storage space under, hanging space and ample shelves. The berth cushion is covered in heavy duty cloth material. Side lining foam, covered with cloth. Head linings as Saloon. 12 volt socket, 18" x 12" mirror fitted.

Forward Cabin: Fitted safety ventilation escape hatch forward, two single berths with 5" foam mattresses and covered in heavy duty cloth material, to choice. Hand basin with hot and cold water. Lea boards in teak with stowage and two drawers under each. Hull panelling foam, covered with heavy duty cloth material. Windows, curtains and floor covering with clothes rail. Individual berth light and 12 volt socket fitted. Locker space above berths. 18" x 12" mirror.

Cockpit: Trakmark covered on mahogany version or solid teak decking in cockpit on teak version, with two hinged hatches over engines. Hinged hatches over gas bottle storage and rope storage. Removable steps, giving ample access to engine.

DECK FITTINGS

Stainless steel pulpit and all round guardrails, fitted with fender carriers. Stainless steel bathing platform ladder, only teak version. Stainless steel mast. Stem head roller. Six bollards. Fairleads, only teak version. High speed anchor winch, 8 fathoms of 7/8" chain, 10 fathoms nylon rope. 22lb anchor. Twin horns, twin wipers, navigation lights, compass, echo sounder and fire extinguisher. Fenders, warps. Ensign staff.

Color gas: Two 10lb gas cylinders are fitted in a sealed metal container with drain through hull. The piping used is copper and the appliances have safety devices.

Colours: Hull and superstructure white (standard), or special to customer's choice at additional cost. Antifouling and boot top line to choice. Cabin headlinings, berth and settee cushions to choice.

Alternative cabin layout available, drawing on request. Presented here is a luxury craft, not mass produced. Customers can choose hull and superstructure colours, curtains, carpets etc. Therefore, each craft can be built to the customer's specifications.

ACCOMMODATION

Galley: Sink Unit with combined stainless steel sink top, hot plate and grills with adequate stowage and cupboard space under. Fitted with chrome mixer tap for hot and cold water, calor gas oven, one cubic foot gas refrigerator, fitted with safety cock and built-in safety device, vented through port side hull.

Main Saloon: Full length settee/double berth with cushions covered in Dralon. Free standing table. Cocktail cabinet. All flooring covered in deep pile carpet. Pelmet to all windows with silent anodised aluminium curtain track. Cabin linings—Teak or Mahogany and head linings in best quality linyde, with condensation barrier. Curtains in high quality material, fully lined to choice. All joinery, Mahogany or Teak and satin finished.

The builders have the right to alter the specification or layout without prior notice.

Hartford Marina Ltd

A Yule Catto Company
Sole Distributors

Banks End, Wyton,
Huntingdon, Cambs.
PE17 2AA
Tel: 54677/54678 (STD Code 0480)



Should you wish to examine the Sancerre 33SL more closely, please contact:

**BROKERAGE DEPARTMENT
COBB'S QUAY LIMITED
HAMWORTHY,
POOLE
DORSET
Tel. Poole 2588/4290**

Your Local Agent