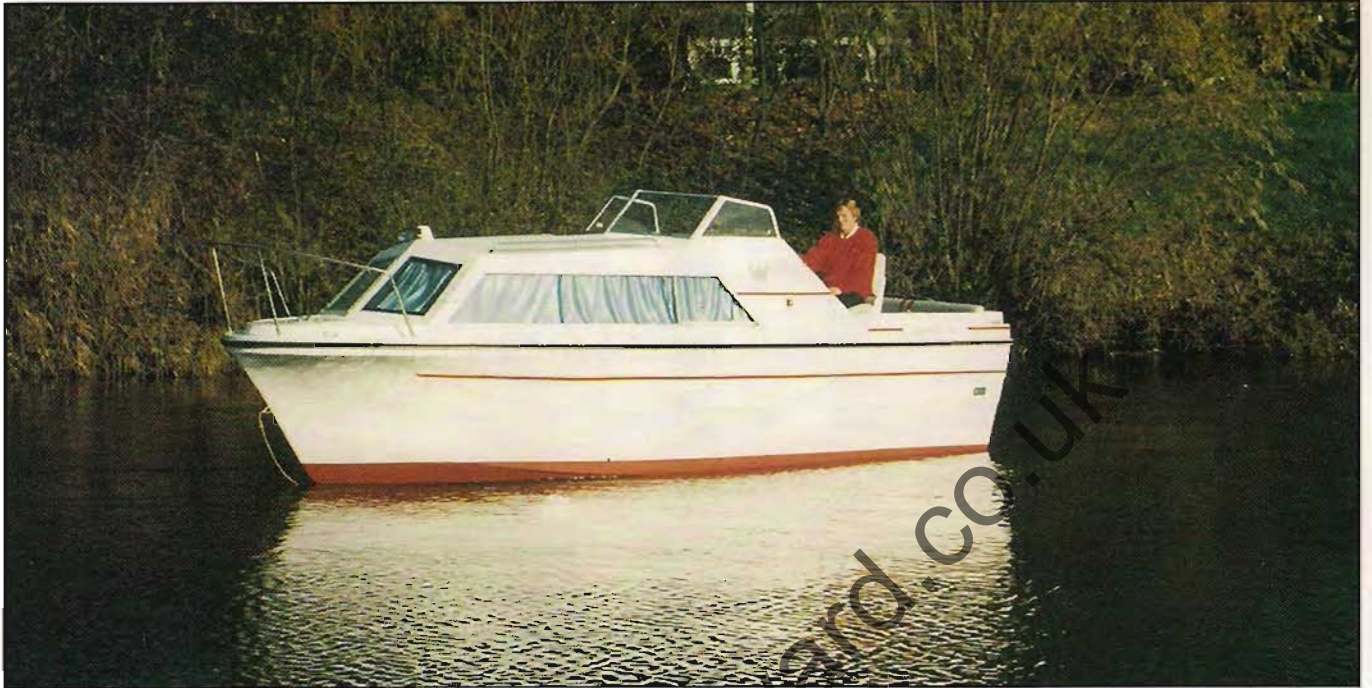
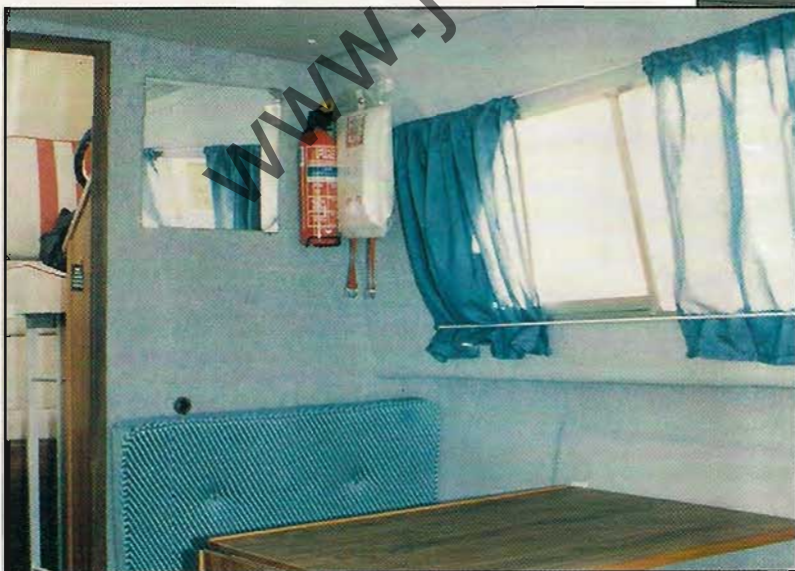


Viking Start 20



The Viking Start 20 is the ideal four berth family starter boat for those wishing to "get afloat" on the rivers and wide-beam canals.



"The boat does offer excellent headroom, almost 6ft throughout. Add to this a generous beam and large windows, and you have a light, roomy cabin finished in teak-faced trim, as indeed is the cockpit. This is a tidy riverboat".

Motorboats Monthly.



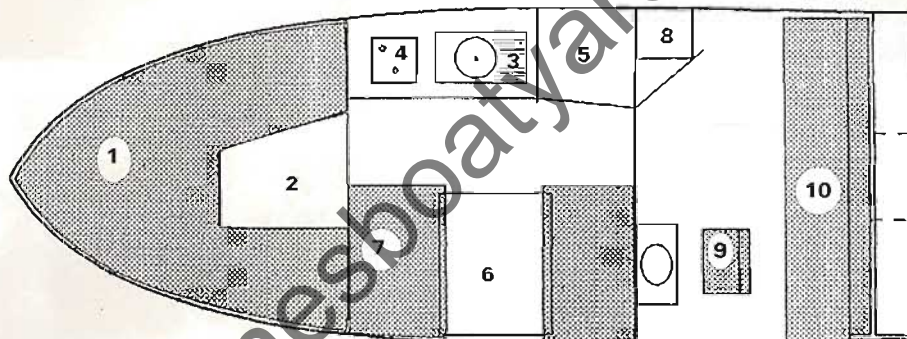
Viking Cruisers Ltd.
Upton Marina, Upton-upon-Severn, Worcester WR8 0PB
Tel: [++44] (0)684 594699 Fax: [++44] (0)684 593325



Viking Start 20

Dimensions:

Length, Longueur, Länge:	20' 0"	6.1m
Beam, Largeur, Breite:	7' 4"	2.25m
Draft, Tirant d'eau, Tiefgang:	1' 2"	0.36m
Height above waterline:	6' 6" 7' 4"	2.0m To Screen 2.25m Canopy up
Cabin Headroom:	6' 0" approx.	1.8m approx.
Berths:	4 in two large double berths or twin single and double	
Weight: (Ex Engine)	850Kg approx.	
Construction:	G.R.P.	
Maximum engine size:	40hp (32Kw). Outboard in Longshaft model	



Equipment fitted to hull as standard (see your dealer for full package details)

- | | | |
|------------------------------------|-----------------------|------------------------|
| 1. Double berth | 2. Berth In fill | 3. Galley Sink |
| 4. Galley Cooker | 5. Toilet Compartment | 6. Table/Berth In fill |
| 7. Dinette Seating | 8. Gas Locker/Step in | 9. Helm seat |
| 10. Aft Bench seating with stowage | | |

We reserve the right to alter specification, E&OE

Viking Cruisers Ltd.

Upton Marina
Upton-upon-Severn
Worcester WR8 0PB

Tel: [++44] (0)684 594699

Fax: [++44] (0)684 593325