



JONES BOATYARD
ESTABLISHED 1946



"Annie May"

Duchess 9mtr

£17,950.00

REF: 64

Manufacturer/model: [Duchess / Duchess 9mtr](#)

A good example of the Duchess 9mtr with twin 2 cylinder Volvo Penta 2000 series diesel engines on shaft drive. She is ideal for quiet and economical river cruising and can accommodate four in two spacious double berths. This aft cockpit cruiser is designed on the Seamaster 820 with only 10 ever built.

Boat specification:

- Year: [1980's](#)
- Length: [29ft 4in \(8.94m\)](#)
- Beam: [10ft 2in \(3.1m\)](#)
- Draught: [2ft 6in \(0.76m\)](#)
- Berths: [4](#)
- Engine: [Twin Volvo Penta 2000 Series](#)
- Fuel: [Diesel](#)
- Drive Type: [Twin Shaft Drive](#)
- BS Cert: [May 2025](#)
- Extras: [Hot water, shower, fridge, shore power](#)



Boat specification (continued):

Construction

- White GRP hull and superstructure
- Treadmaster non slip decks
- Folding alloy framed windscreen
- Folding stainless steel arch
- Black acrylic canvas cockpit canopy

Mechanical

- Twin Volvo Penta 2000 Series 2 cylinder diesel engines
- Conventional shaft drive
- Single lever controls
- Engine instrumentation
- Fuel and water contents gauges

Accommodation

- 2 v berths forward
- Infill panel converts to double berth
- Main saloon has table dinette to port
- Bench seating area to starboard
- Bulkhead in-fill panels separate forward cabin
- Hanging locker
- Offset galley to port

Galley

- Stainless steel sink
- Hot water provided by immersion
- Plastimo Voyager 2000 2 ring hob, grill and oven
- Isotherm 12v fridge
- Storage throughout

Heads

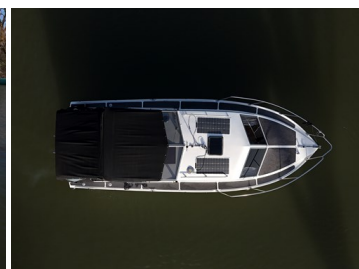
- Stainless steel sink
- Shower unit
- Jabsco sea toilet
- Moulded shower tray

Cockpit

- Helm position and seat to port
- Navigator seat to starboard
- Bench seating aft
- Access to engine room below

Recent Works

- Engines serviced TBC
- Last antifouled April 2024



Demonstrations are only conducted once we have an agreement on price and a 10% deposit has been taken. Once the demonstration has been run we recommend that the boat is surveyed by an independent surveyor prior to purchase. The deposit is fully refundable should the river boat trials or survey prove unsatisfactory in any way. To arrange a river boat demonstration then please contact us on 01480 494040. THIS SPECIFICATION IS INTENDED AS ILLUSTRATION AND DOES NOT FORM PART OF ANY CONTRACT.